

Key Specifications

- Compliant to MEF 9 / 14 standards – E-Line, E-LAN service
- Support 9.6K Bytes jumbo frame
- IEEE 802.1Q tagged VLAN, port / MAC / Protocol based VLAN
- Max. support 256 VLAN groups
- IEEE 802.1ad Q-in-Q for ISP application
- Various QoS capability (IEEE 802.1p / port / MAC / Diffserv)
- STP / RSTP / MSTP
- ITU-T G.8032 Ethernet ring protection
- DHCP snooping (option 82)
- 802.1x authentication, RADIUS authentication, TACACS+
- IGMP snooping v1/v2/v3, MLD snooping v1/v2, MVR
- IPv6 support
- Web / CLI / SNMP management
- Support SNMP v1/v2c/v3
- IEEE 802.3ah / IEEE 802.1ag / ITU-T Y.1731 Ethernet OAM support

Ethernet Demarcation Device

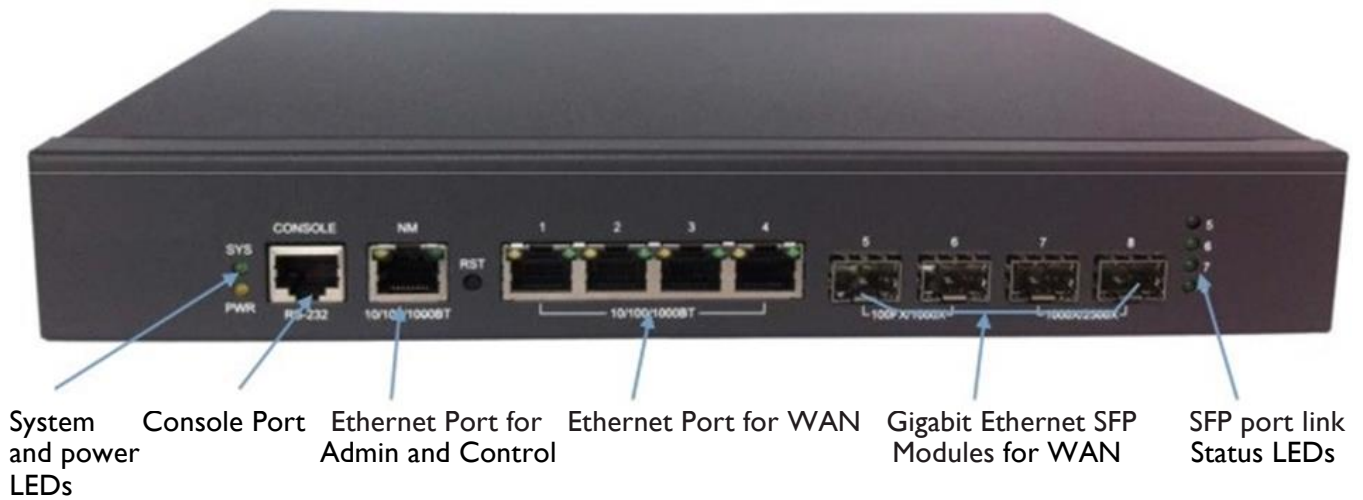
Overview

Xenya Ethernet Demarcation Device transports Gigabit Ethernet traffic over fiber, enabling EPL (Ethernet Private Line) & EVPL (Ethernet Virtual Private Line) services with advanced carrier Ethernet features per MEF-9 and MEF-14 specifications. Supporting link and service Ethernet OAM schemes, also provides extensive fault detection and diagnostic capabilities to ensure that actual network use complies with pre-agreed service level agreements (SLAs).

Software Features

- E-LINE (EPL and EVPL)
- E-LAN (EP-LAN and EVP-LAN)
- E-ACCESS (ACCESS EPL and EVPL)
- UNI or NNI configuration
- TOS/Diffserv4
- Quality of Service (802.1p): 8 queues; strict priority and WRR, shaping, policing, P-bit and DSCP
- Management via CLI, Web, SSH/SSL and SNMP (V1, V2, &V3)
- Port configuration, status, statistics and monitoring
- RADIUS, TACACS+ and ACL
- Remote backup / restore configuration
- Remote firmware upgrades
- Alarms via Syslog & SNMP
- Remote loopbacks
- L2CP
- LLDP
- Diagnostic Monitoring Interface SFF-8472
- Dying/Last Gasp
- Port Mirroring
- Link Aggregation Control Protocol (LACP)

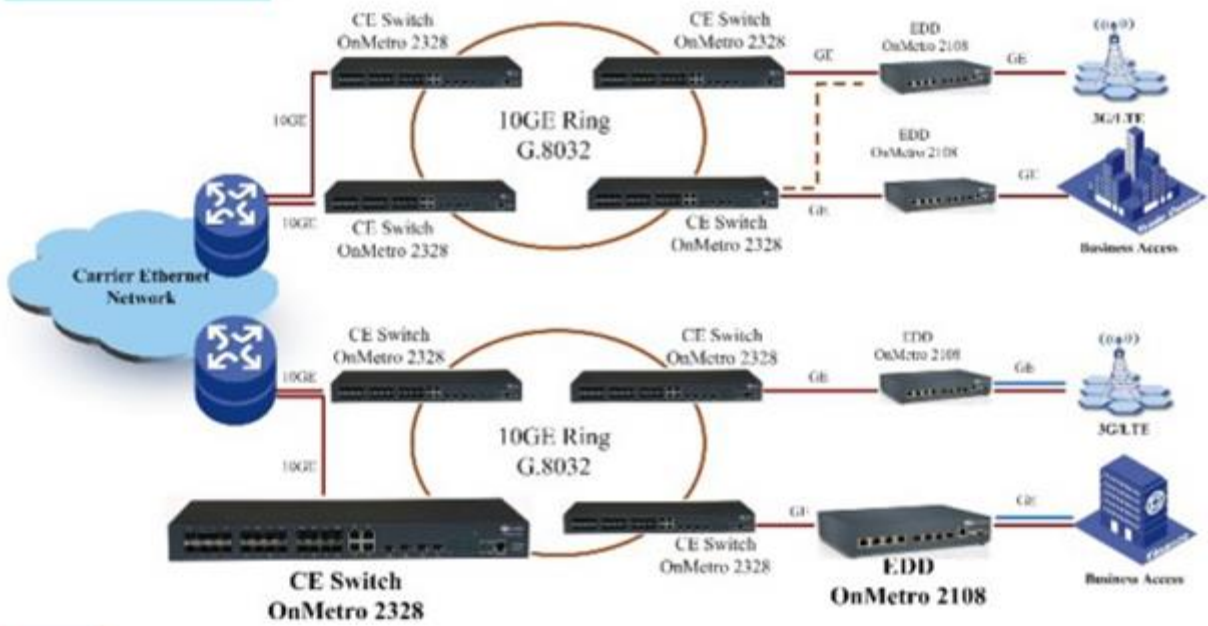
Interfaces



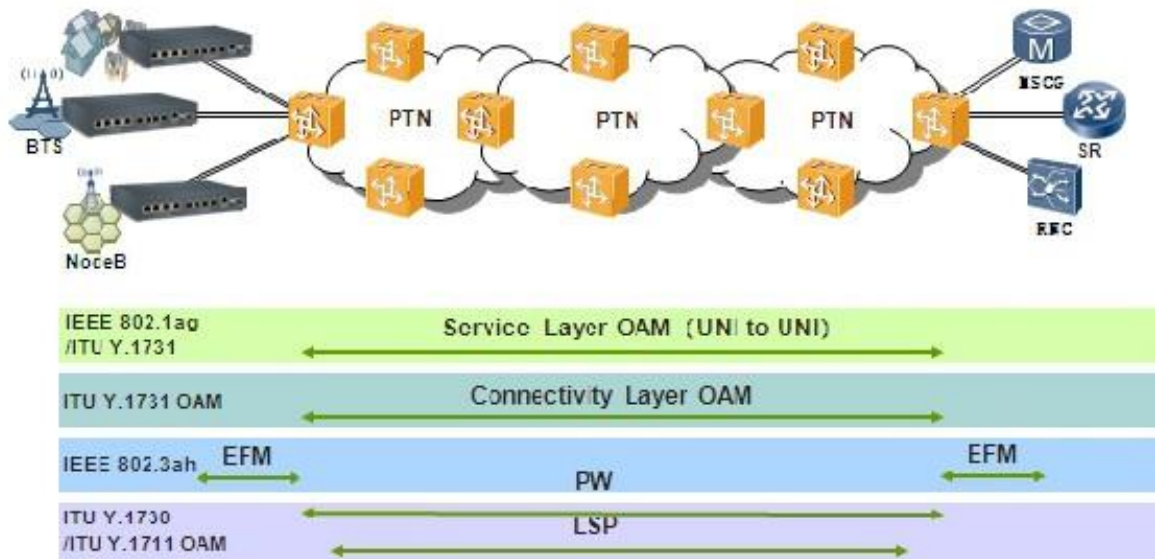
Specifications	
Environmental Specifications	
Operating and Storage Temperature	0°C to +45°C, -40C to +85C
Input Voltage, Power Consumption	100-240VAC 0.9A/50-60Hz,7W
Humidity	5%- 95% non-condensing
Dimensions, Weight	278.00 w x 223.20 d x 44.00 h (mm),About 5Kg
WAN and Service Ports	
Console port	a RS-232 connector for connection to a computer for console control /administration. The RS-232 console port can be used for accessing the CLI (command interface) for out-of-band management.
Ethernet Interface for Administration	Ethernet RJ-45 connection for out-of-band management over the IP network the RJ-45 port is provided to keep management traffic totally isolated from data traffic. Connect the NM port to a PC's Ethernet NIC port to use this management function.
WAN Connectivity	Four Ethernet 10/100/1000 Base-T Connections.
Ethernet SFP Ports	Four Ethernet SFP Connections. support 2.5G bps SFPs and 1G bps SFPs for Fiber connections.

Application Diagram

1 Kenya Ethernet



2 PTN



E-mail: info@xenia.si

Web: <http://www.xenia.si>