



GETTING STARTED WITH OPEN AT



wavecom  confidential ©

This document is the sole and exclusive property of WAVECOM. Not to be distributed or divulged without prior written agreement. Ce document est la propriété exclusive de WAVECOM. Il ne peut être communiqué ou divulgué à des tiers sans son autorisation préalable.



GETTING STARTED WITH OPEN AT

Version: 002

Date: March 8th, 2002

Reference: WM_CUS_OAT_CTI_001

1	Introduction	1
1.1	About this document	1
1.2	Open AT SDK Documentation	1
2	Software installation	2
2.1	System Requirements	2
2.2	Hardware Requirements	2
2.3	Software Requirements	2
3	Installing the Open AT SDK	3
3.1	Setup options	5
3.2	Destination of the Program and Documentation Files	6
3.3	File copy and system update	7
3.4	Compiler	7
3.5	Wavecom Development Toolkit	8
4	Support	9
4.1	Contact Us	9
4.2	World Wide Web	9
5	Warranty	10

List of figures

Figure 1 - Open AT startup screen	3
Figure 2 - Open AT setup	4
Figure 3 – Setup options	5
Figure 4 – Open AT Destination Folder	6
Figure 5 - Open AT SDK files copy	7
Figure 6 – “autoexec.bat” file update	7
Figure 7 – Insert the ARM Compiler Install CD	7
Figure 8 – Do not restart your computer	8

1 Introduction

1.1 About this document

This document describes how to quickly start with the Open AT Software Development Kit.

1.2 Open AT SDK Documentation

The following documents are included in the Open AT SDK:

Document	Description
Open AT flyer ("Take command with Open AT")	General description and features of Open AT.
MUSE Platform brochure ("Give wings to your ideas")	Marketing brochure describing the Wavecom Open Software Platforms (MUSE platform)
Getting Started with Open AT	Description of the first steps to use Open AT.
Tutorial	Tutorial for the development of Open AT applications.
Development Guide	Guide for the development of Open AT applications. This document includes the description of the Open AT APIs, the description of the operating modes and some examples of simple Open AT applications.
Tools Manual	Manual describing the tools available in the Open AT SDK.
AT command Interface Guide	Description of the AT commands supported in the Open AT firmware.
Open AT release note	Release note listing the Open AT design features as well as the new features.
FAQ	Frequently Asked Questions about Open AT

NOTE: All reference manuals are provided in PDF format. The Adobe Acrobat Reader can be downloaded from Adobe's web site at <http://www.adobe.com>.

The recommended version is Version 4.0 or higher.

2 Software installation

To develop and test Open AT applications you must install the Open AT SDK. This chapter guides you through the installation of the Open AT SDK.

2.1 System Requirements

To install the Open AT SDK, your system must support one of the following operating systems:

- Windows 95 / 98 / NT / Me / 2000

2.2 Hardware Requirements

The main requirements for the PC that will support the Open AT SDK are:

- Pentium 300 MHz or higher with at least 64 MB of RAM and 500 MB free on the hard disk
- A CD-ROM drive (for software installation)
- At least 2 free COM (serial) port for the communication with the target product

2.3 Software Requirements

- Microsoft Visual C++ Version 6.0
- ARM Compiler

There are two ways to develop an Open AT application:

- ❶ using the Open AT wizard (“Debug Mode”). This mode requires the Visual C++ environment.
- ❷ using the MS-DOS generation tools (“Target mode”). This mode does not require Visual C++.

IMPORTANT: *The ARM compiler is included in the SDK as an option. The compiler must be compatible with the Open AT software version. In case the ARM compiler has not been ordered with the Open AT SDK, please check that your current version of the ARM compiler is compatible with the Wavecom core software.*

3 Installing the Open AT SDK

Insert the Open AT SDK CD-ROM in the drive on your PC. If the auto-start is enabled, the installation will begin automatically.

If the auto-start is disabled or for some reason the auto-installation does not start, you can use Windows Explorer to launch `SETUP\DISK1\SETUP.EXE` from the root folder of the CD-ROM.

After this, the following menu is displayed.



Figure 1 - Open AT startup screen

From this menu several operations are possible :

- Edit the Readme.txt file, describing the CD-ROM content.
- Install the Open AT SDK.
- Access the folder with all documents related to Open AT.
- Explore the CD-ROM contents.
- Exit the Open AT installation program.

To install the Open AT SDK choose **INSTALL OPEN AT**. The setup program will then run.



Figure 2 - Open AT setup

Select **Next** to continue

3.1 Setup options

Three components can be installed either together or separately. The first component is Open AT itself, with the development environment, the support files, the libraries and the documentation in PDF format. The second component is the Open AT reference applications. The third (optional) component is the ARM compiler.

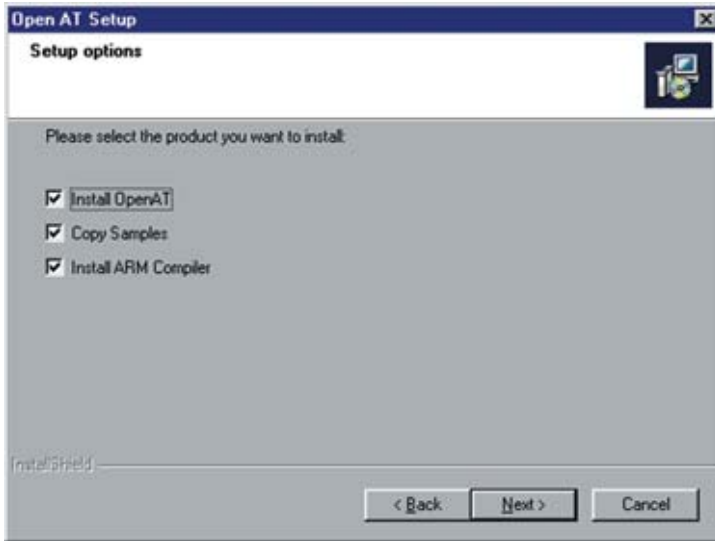


Figure 3 – Setup options

After the choose of setup options select **Next** to continue.

3.2 Destination of the Program and Documentation Files

The Open AT SDK can be installed in any directory on your hard disk.

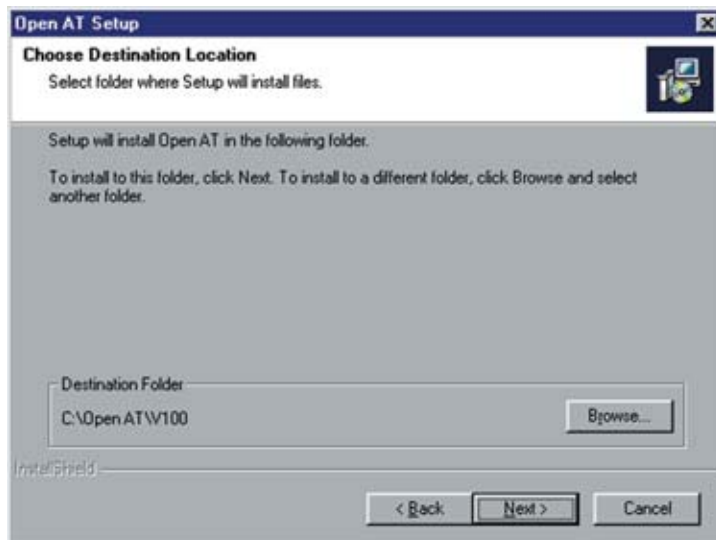


Figure 4 – Open AT Destination Folder

The default location, as shown in the example above, is in a folder named with the version number of the Open AT SDK. It is by default installed under the root folder of the C: drive. If this location is not suitable, enter a different path before clicking **Next**. The files will be copied under the destination folder that is specified.

3.3 File copy and system update

The setup program will now copy the Open AT SDK files on your hard drive.



Figure 5 - Open AT SDK files copy

When the copy is done, the setup program updates your “**autoexec.bat**” file, creating a “**autoexec.000**” backup file with your previous configuration.



Figure 6 - “autoexec.bat” file update

3.4 Compiler

If you select the “**Install ARM compiler**” option (cf. §3.1), the setup program asks for the ARM Compiler CD-ROM.



Figure 7 - Insert the ARM Compiler Install CD

Insert this CD-ROM and press the **OK** button. Now the ARM Compiler Setup program will run. Please follow the indications displayed to complete this installation. Please **not restart your computer** when you are asked to, at the end of the compiler installation.

3.5 Wavecom Development Toolkit

If you did not select the “Install ARM compiler” option (cf. §3.1), at the end of the Open AT SDK setup program you will be asked to restart your computer. Please select the “NO” option.

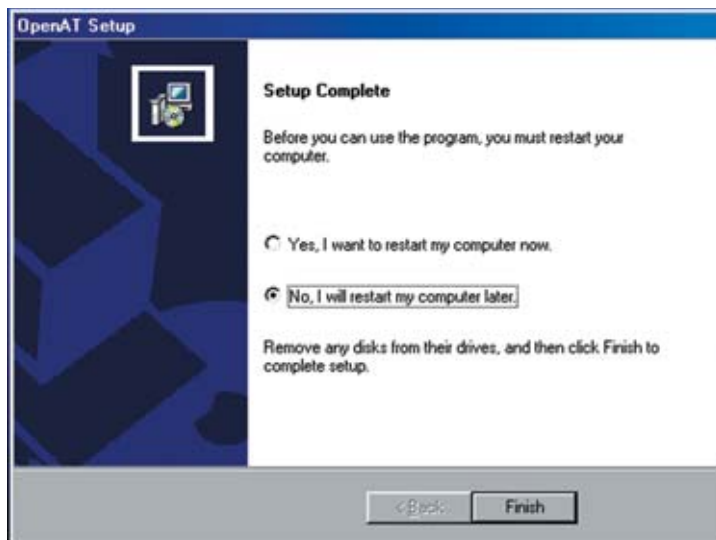


Figure 8 – Do not restart your computer

On the Open AT startup screen (cf. §3, figure 1), select the “Install Development Toolkit” option. This starts the Wavecom Development Toolkit Setup program. Please follow the displayed indications to complete this installation. At the end of the Setup program, please select the “YES” option when you are asked to restart your computer, in order to update your configuration.

4 Support

Our goal is to provide you with professional assistance in the use of the Open AT software.

4.1 Contact us

We are pleased to support you via e-mail, phone or fax. You can also get some support material from our web site.

Depending on your location, please contact:

For Europe / Middle East / Africa

✉ : **Wavecom SA** - Technical Support
12, Boulevard Garibaldi
92442 Issy Les Moulineaux - FRANCE
☎ : + 33 (0)1 46 29 08 00
☎ : + 33 (0)1 46 29 56 70
📧 : OpenAT-support@wavecom.com

For Asia Pacific

✉ : **Wavecom Asia Pacific Ltd** - Technical Support
5/F, Shui On Centre - 6/8 Harbour Road - Wan Chai
HONG KONG - PRC
☎ : + 852 2824 0254
☎ : + 852 2824 0255
📧 : OpenAT-support-APAC@wavecom.com.hk

For Americas

✉ : **Wavecom Inc.** - Technical Support
4810 Eastgate Mall - second floor
SAN DIEGO, CA 92121 - USA
☎ : + 1 858 362 01 01
☎ : + 1 858 558 54 85
📧 : support@wavecom-inc.com

4.2 World Wide Web

You can get general information and support material on Open AT at:

<http://www.wavecom.com>

The MUSE Platform section you will allow you to access the Open AT dedicated section from the Wavecom web site. Through this, you will be able to get and share technical and marketing knowledge about Open AT.

Registered customers will also have access to the Customer Support section to download the latest updates on Open AT.

5 Warranty

CAUTION:

All products under warranty that are sent back to Wavecom for repair must be free of any embedded application.

Wavecom will return all Open AT compatible products under warranty with the default factory configuration.

wavecom[®]

WAVECOM S.A. - 12, boulevard Garibaldi - 92442 Issy-les-Moulineaux Cedex - France - Tel: +33 (0)1 46 29 08 00 - Fax: +33 (0)1 46 29 08 08
WAVECOM, Inc. - 4810 Eastgate Mall - Second floor - San Diego, CA 92121 - USA - Tel: +1 858 362 0101 - Fax: +1 858 558 5485
WAVECOM Asia Pacific Ltd - 5/F Shui On Centre - 6/8 Harbour Road - Hong Kong, PRC - Tel: +852 2824 0254 - Fax: +852 2824 0255

www.wavecom.com