





## LSH (E-2000™)

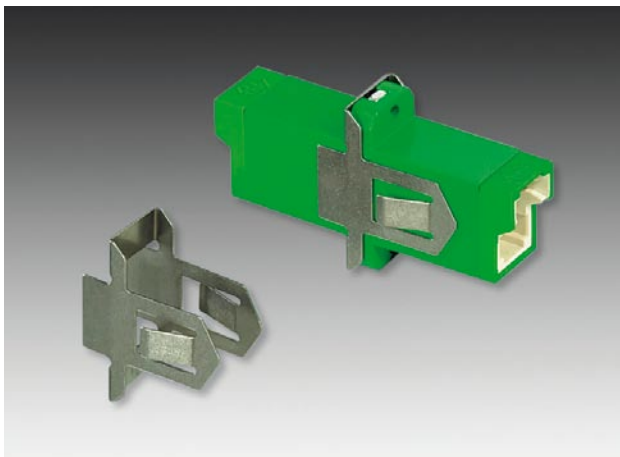
### Ordering information: LSH connector, uncoded

| Connector type     | Polishing | Insertion loss <sup>1)</sup><br>[dB] (mean/97%) | Cable Ø | Type           |
|--------------------|-----------|---|---------|----------------|
| SM                 | PC/UPC    | 0.12/0.25                                       | ≤ 3.5   | FLSH-2000-A105 |
| SM                 | APC       | 0.12/0.25                                       | ≤ 3.5   | FLSH-2000-A608 |
| SM premium         | PC/UPC    | 0.06/0.15                                       | ≤ 3.5   | FLSH-2000-H101 |
| SM premium         | APC       | 0.06/0.15                                       | ≤ 3.5   | FLSH-2000-H600 |
| G50/125, G62.5/125 | PC        | 0.2 / 0.5                                       | ≤ 3.5   | FLSH-2000-B103 |
| HCS200/230         | PC        | 0.3 / 0.75                                      | ≤ 3.5   | FLSH-2000-D101 |

1) IEC 61300-3-34 method 2

### Ordering information: adapter

| Adapter type             | Mounting                  | Sleeve material  | Colour | Type           |
|--------------------------|---------------------------|------------------|--------|----------------|
| SM                       | with 2-hole flange        | zirconia ceramic | blue   | FLSH-FLSH-D100 |
| SM APC                   | with 2-hole flange        | zirconia ceramic | green  | FLSH-FLSH-D600 |
| SM HighPower             | with 2-hole flange        | zirconia ceramic | blue   | FLSH-FLSH-D110 |
| SM APC HighPower         | with 2-hole flange        | zirconia ceramic | green  | FLSH-FLSH-D610 |
| MM                       | with 2-hole flange        | zirconia ceramic | beige  | FLSH-FLSH-D102 |
| compact SM               | integrated fixing springs | zirconia ceramic | blue   | FLSH-FLSH-A100 |
| compact APC              | integrated fixing springs | zirconia ceramic | green  | FLSH-FLSH-A600 |
| compact SM HighPower     | integrated fixing springs | zirconia ceramic | blue   | FLSH-FLSH-A110 |
| compact SM APC HighPower | integrated fixing springs | zirconia ceramic | green  | FLSH-FLSH-A610 |
| compact MM               | integrated fixing springs | zirconia ceramic | beige  | FLSH-FLSH-A101 |



### Ordering information: accessories

| Quick-mounting spring | Material | Type      |
|-----------------------|----------|-----------|
| 25 pieces             | metal    | 9801.93.A |

- easy snap mounting

# LSH (E-2000™)

## Mechanical coding system

The mechanical and colour coding system allows fast and secure installation of connectors and adapters, ensuring mating without risk of confusion. Connectors and adapters without coding are still available and fit on any coded piece.

## Ordering information

| Type             |              |                        |
|------------------|--------------|------------------------|
| FLSH-FLSH-D600-A | adapter code |                        |
| 0                | uncoded      | same colour as adapter |
| 1                | red          | coded                  |
| 2                | brown        | coded                  |
| 3                | yellow       | coded                  |
| 4                | orange       | coded                  |
| 5                | purple       | coded                  |
| 6                | white        | coded                  |
| A                | red          | uncoded                |
| B                | brown        | uncoded                |
| C                | yellow       | uncoded                |
| D                | orange       | uncoded                |
| E                | purple       | uncoded                |
| F                | white        | uncoded                |
| G                | green        | uncoded                |
| H                | blue         | uncoded                |
| I                | black        | uncoded                |
| J                | grey         | uncoded                |
| K                | pink         | uncoded                |
| L                | turquoise    | uncoded                |

FLSH-FLSH-D600-A24 example with red/orange coding  
 → coding frame at back  
 → coding frame at front

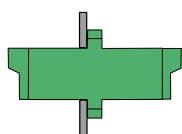
| Type             |                |         |
|------------------|----------------|---------|
| FLSH-2000-A101-C | connector code |         |
| 1                | red            | coded   |
| 2                | brown          | coded   |
| 3                | yellow         | coded   |
| 4                | orange         | coded   |
| 5                | purple         | coded   |
| 6                | white          | coded   |
| A                | red            | uncoded |
| B                | brown          | uncoded |
| C                | yellow         | uncoded |
| D                | orange         | uncoded |
| E                | purple         | uncoded |
| F                | white          | uncoded |
| G                | green          | uncoded |
| H                | blue           | uncoded |
| I                | black          | uncoded |
| J                | grey           | uncoded |
| K                | pink           | uncoded |
| L                | turquoise      | uncoded |

FLSH-2000-A101-C1 example with red coding

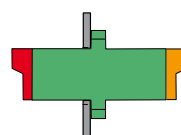


## Examples:

FLSH-FLSH-D600 – green adapter without coding



FLSH-FLSH-D600-A14 – green adapter + red coding frame on frontside, orange coding frame on backside



FLSH-2000-A101 – blue connector without coding



FLSH-2000-A101-C1 – blue connector + red coding



Manufacturing of E-2000™-connectors under licence of DIAMOND SA, CH-Losone