

Datasheet

Management



Overview

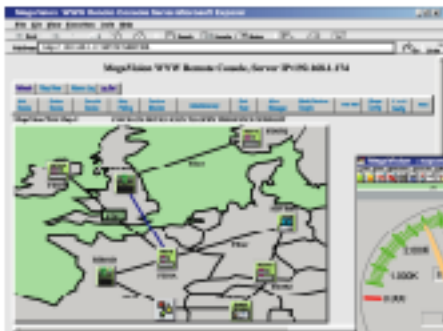
The Fiber Driver™ EM316NM Network Management Module allows for the monitoring and managing of your fiber infrastructure. Using SNMP MIBs, it polls the active Fiber Driver modules, and displays the MAC address, type of installed cards, and link status, as well as other important information. The Network Management Module also enables module loop-back testing, and provides the ability to configure parameters such as the system IP address. It monitors system activities like the loss of signal on ports, temperature out of range, power supply status, fan status, and transmit and receive signal detection. It supports an extensive array of traps and can provide automatic e-mail notification.

By daisy-chaining two 16-slot chassis together, a single EM316NM Network Management Module can manage up to 31 Fiber Driver Modules.

For additional information including pricing and availability, contact your MRV Communications sales representative today.

Features

- Remotely configure and monitor any Fiber Driver module and/or chassis
- Network management locally via RS-232 Command Line Interface (CLI)
- Remote SNMP network management via Telnet, MegaVision Web™, or any standard NMS system
- Manage up to 31 Fiber Driver modules
- E-mail alert notification based on system events
- Supports ping, module loop-back diagnostics, and module reset
- Fits all 2-, 3-, 4-, or 16-slot Fiber Driver chassis (use of an EM316NMS-Hub requires using a 3-, 4-, or 16-slot chassis)
- LED status indicators for power, transmit/receive, and link



Typical server display using MegaVision Web™ and EM316NM Module



The EM316NM module provides three ways to manage your Fiber Driver chassis, modules, and fiber infrastructure:

- 1) Out-of-Band management, using a command line interface (CLI), via the RS-232 connector on the EM316NM.
- 2) In-Band management, using Telnet (the EM316NM has a 10BaseT Ethernet connector).
- 3) SNMP (In-Band management), via the MRV Communications MegaVision Web™ or any standard Network Management System.

Information Provided by Management:

- Link Status
- In Range Temperature
- Module Type
- Card ID
- Revision Number
- Slot and Port Number
- Power Supply Status
- Additional information for some modules

Physical Specifications: Management Module

Operating Temperature Range:	0°C to 50°C (32°F to 122°F)
Storage Temperature:	-10°C to 60°C (14°F to 140°F)
Relative Humidity:	85% maximum, non-condensing
Physical Dimensions:	25 mm x 75 mm x 175 mm deep (1" x 3" x 7" deep)
Weight:	140 g (4 oz)
Emission Compliance:	FCC - PART 15, SUBPART B, 1999, CLASS A; CE MARK - EN 50081-1:1992; EN 50082:1997; EN 55024:1998; EN 55022:1998; AS/NZS 3548:1995

MRV has more than 50 offices throughout the world. Addresses, phone numbers, and fax numbers are listed at www.mrv.com. Please e-mail us at sales@mrv.com or call us for assistance.

MRV (West Coast USA)
 20415 Nordhoff St.
 Chatsworth, CA 91311
 800-338-5316
 818-773-0900

MRV (East Coast USA)
 295 Foster St.
 Littleton, MA 01460
 800-338-5316
 978-952-4700

MRV (International)
 Business Park Moerfelden
 Waldeckerstrasse 13
 64546 Moerfelden-Walldorf
 Germany
 Tel. (49) 6105/2070
 Fax. (49) 6105/207-100

All statements, technical information and recommendations related to the products herein are based upon information believed to be reliable or accurate. However, the accuracy or completeness thereof is not guaranteed, and no responsibility is assumed for any inaccuracies. Please contact MRV Communications for more information. MRV Communications and the MRV Communications logo are trademarks of MRV Communications, Inc. Other trademarks are the property of their respective holders.