

# SmartSwitch Router 2000

## SSR 2000

### THE APPLICATION-AWARE DESKTOP ENTERPRISE SWITCH



Introducing the SmartSwitch Router 2000, the application-aware desktop enterprise switch from Cabletron Systems. Designed for the workgroup, the SSR 2000 provides high-density, wire-speed 10/100/1000 Mbps switching and routing with throughput in excess of 6.0 million packets per second. The SSR 2000 delivers wire-speed, application-level control by switching packets at Layer, 2, 3 and 4. You can push policy-based, application-level Quality of Service to the desktop. Protect uplinks and servers with Access Control Lists. Gather detailed accounting information with per-port RMON/RMON2. Use VLANs, IP Multicast and much more.

In addition to 16-ports of 10/100Base-TX, the SmartSwitch Router 2000 provides the flexibility of two expansion slots for connectivity to high-speed backbones and local servers as well as across the WAN.

The open slots may be populated with a variety of LAN and WAN expansion modules, including 2-port Gigabit Ethernet (1000Base-SX or -LX) modules, 8-port Fast Ethernet modules (FX or TX), 2- or 4-port serial WAN (PPP or Frame Relay) modules, and 1-port 70 km 1000Base-LX or 100Base-FX modules.

- **Industry's first switching router with WAN connectivity**
- **8.0 Gbps non-blocking switching fabric**
- **Wire-speed switching and IP/IPX routing at more than 6 million pps**
- **16-10/100Base-TX ports in base configuration**
- **2 expansion slots provide flexibility for backbone, server and WAN connectivity**
- **Includes full Layer 2/3/4 switching at no extra cost**
- **Application-level control through Quality of Service, security and accounting**
- **Comprehensive management: Java based GUI, SPECTRUM, RMON/RMON2**
- **Built-in redundant power supplies**

## SSR 2000



### Performance

8 Gbps non-blocking switching fabric  
6.0 million pps routing/switching throughput

### Functionality

Wire-speed Layer 2/3/4 switching  
Wire-speed IP/IPX routing  
Wire-speed QoS, security, accounting  
Wire-speed multicast  
Policy-based management via directory services

### Capacity

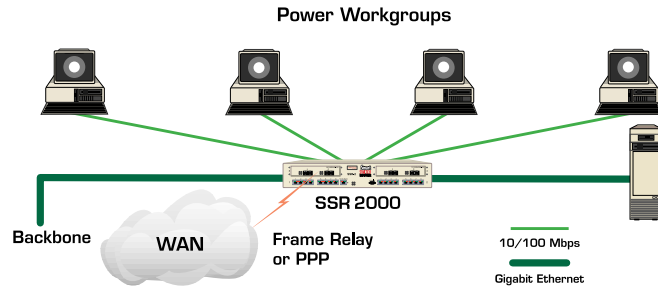
16-10/100Base-TX ports in base configuration  
2 expansion slots provide flexibility  
2-port 1000Base-SX or LX expansion module  
8-port 10/100Base-TX expansion module  
8-port 100Base-FX expansion module  
2- or 4-port serial WAN interface (PPP & Frame Relay) supporting up to E2 (8 Mbps) rates  
1-port 70 km 1000Base-LX or 100Base-FX modules

### Uplinks

WAN (Serial)  
70 km (100Base-FX and 1000Base-LX)

© 1999 Cabletron Systems, Inc. SmartSwitch Router and SPECTRUM are registered trademarks of Cabletron Systems, Inc. All other products or services mentioned are identified by the trademarks or service marks of their respective companies or organizations.

NOTE: Cabletron Systems, Inc. reserves the right to change specifications without notice. Please contact your representative to confirm current specifications.



Wire-speed, application-level control makes the SSR 2000 ideal for enterprise desktop connectivity.

### Capacity

Up to 180,000 MAC addresses  
Up to 16,000 routes  
Up to 128,000 Layer-4 flows  
Up to 2,000 Access control lists

### Protocols and Standards (Abridged)

**IP Routing:** RIPv1/2, OSPF, BGP-4  
**IPX Routing:** RIP, SAP  
**Multicast Support:** IGMP, DVMRP, PIM-DM, PIM-SM  
**QoS:** Application level, RSVP  
**WAN Support:** PPP and Frame Relay  
IEEE 802.1p  
IEEE 802.1Q  
IEEE 802.1d Spanning Tree  
IEEE 802.3  
IEEE 802.3u  
IEEE 802.3x  
IEEE 802.3z

### Physical and Environmental

**Dimensions:** 2.8" H x 17" W x 18.5" D  
**Product Weight:** 20.0 lbs.  
**Operating Temperature:** +5° to +40°C (41° to 104°F)  
**Operating Humidity:** 5% to 90% (non-condensing)  
**Power Consumption Voltage Range:** 100 to 125 Vac or 200 to 250 Vac

### About Cabletron

Cabletron Systems is a leading developer of standards-based LAN, WAN and ATM networking solutions. Through its intelligent switching and enterprise management products, Cabletron provides the foundation for a "smarter network" that seamlessly ties together existing equipment with newer products and applications for a strategic enterprise that's more in line with the short- and long-term goals of an organization.

*The Smart Networking Choice.™*

**Interfaces:** Serial WAN, 70 km  
1000Base-LX and 100Base-FX

### Product Ordering Information

Part No.	Description
<b>SSR-2-B</b>	16-port 10/100Base-TX with 2 expansion slots
<b>SSR-2-PKG</b>	24-port 10/100Base-TX with a 2-port 1000Base-SX expansion module
<b>SSR-2-LX</b>	2-port 1000Base-LX expansion module
<b>SSR-2-SX</b>	2-port 1000Base-SX expansion module
<b>SSR-2-FX</b>	8-port 100Base-FX expansion module
<b>SSR-2-TX</b>	8-port 100Base-TX expansion module
<b>SSR-2-SER</b>	2-port WAN serial (only one connector and 32 MB)
<b>SSR-2-SERC</b>	4-port WAN serial with hardware compression
<b>SSR-2-SERCE</b>	4-port WAN serial with hardware compression and hardware encryption

*For complete ordering information, including specific modules, contact your Cabletron representative at 603-332-9400 or contact your local authorized reseller. You may also visit our Web site at [www.cabletron.com/smartswitch-router](http://www.cabletron.com/smartswitch-router).*

**CABLETRON**  
SYSTEMS

<b>Corporate</b> Tel.(603) 332-9400 Fax (603) 337-2211	<b>Canada</b> Tel.(905) 673-8807 Fax (905) 673-9480	<b>Europe/Middle East/Africa</b> Tel.44-1635-580000 Fax 44-1635-44578	<b>Asia Pacific</b> Tel.65-775-5355 Fax 65-776-3382	<b>Latin America</b> Tel.525-490-3400 Fax 525-652-9615	<b>Internet</b> <a href="http://www.cabletron.com">www.cabletron.com</a>
--	---	---	---	--	---