



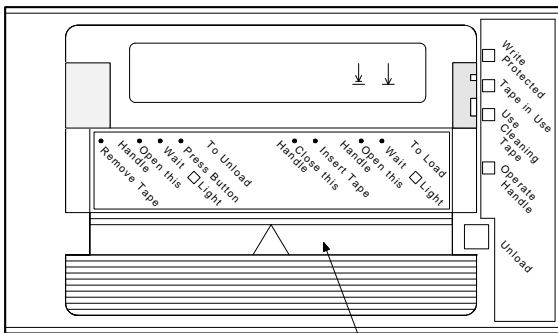
EK-OTK86-RC-001

## Tx86<sup>1</sup> Tape Drive Operator's Reference Card

Use this card as a quick reference when operating the Tx86 tape drive in your system.<sup>1</sup> For detailed information, see your owner's manual.

### Tx86 Front Panel

These components on the Tx86 front panel are for operating the drive:



CARTRIDGE INSERT/RELEASE HANDLE

SHR-X0056G-91

<sup>1</sup> Tx86 is a generic reference to the tape drive associated with any member of the Tx86 cartridge tape subsystem or the Tx867 magazine tape subsystem.

### Power-On

When you turn on system power, the drive performs the power-on self-test (POST). The sequence of events is:

1. The indicators turn on sequentially, from top to bottom.
2. All four indicators turn on simultaneously for approximately three seconds.
3. The green Operate Handle indicator and the two orange indicators turn off.
4. The yellow Tape in Use indicator blinks.
5. If no cartridge is loaded, the green Operate Handle indicator turns on and the beeper sounds.

### Indicator Summary

Use this table to determine the drive's operating condition:

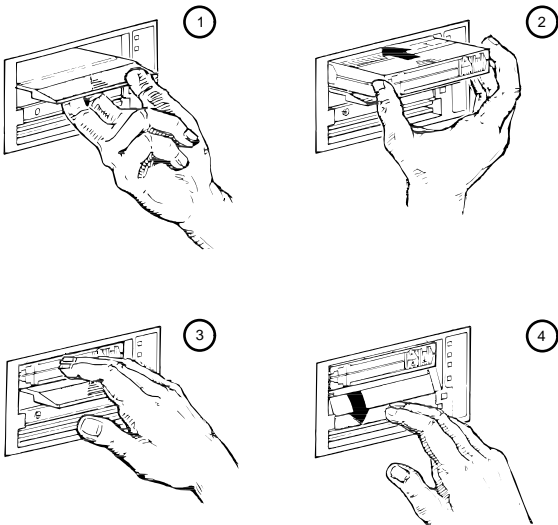
Indicator	State	Condition
Operate Handle (green)	On	Okay to operate the cartridge insert/release handle.
	Off	Do not operate the cartridge insert/release handle.
Tape in Use (yellow)	Blinking	Tape is moving.
	On	Tape is loaded; ready for use.
Write Protected (orange)	On	Tape is write-protected.
	Off	Tape is write-enabled.
Use Cleaning Tape (orange)	On	Load a CleaningTape III cartridge.
	Off	No cleaning required.
All 4 indicators	On	POST is in progress.
	Blinking	Drive fault occurred. Press the Unload button to clear the error. If the error remains, call Digital Services.

## Loading a Cartridge

To load a cartridge into the drive:

1. When the green Operate Handle indicator is on steadily, pull the cartridge insert/release handle open.
2. Insert the cartridge.
3. Push the cartridge into the drive.
4. Push the handle closed.

The green Operate Handle indicator turns off and the yellow Tape in Use indicator blinks to show the tape is loading. When the tape is at the BOT marker, the yellow indicator turns on steadily. The tape is now ready for use.



### Unloading a Cartridge

To unload a cartridge from the drive:

1. Press the Unload button or issue the appropriate system software command. The yellow Tape in Use indicator blinks as the tape rewinds. The green Operate Handle indicator turns on and the beeper sounds when the cartridge is ready to be removed.
2. Pull the cartridge insert/release handle open.
3. Remove the cartridge.
4. Push the handle closed.

