

THALES NAVIGATION		Marketing & Technical Tips	
ZMax	N° 2003/06	Dec 11 th	By : Patrick BOURIAUD Checked : Denis BERNARD
How to Import / Export DXF Files in Fast Survey			

1. Import DXF file from PC into Fast Survey.

On the field terminal, close all running programs.

Connect the field terminal to the PC com port 1.

Auto connection : if the default settings are correct, ActiveSync should automatically connect to the field terminal. If not, see Fast Survey.

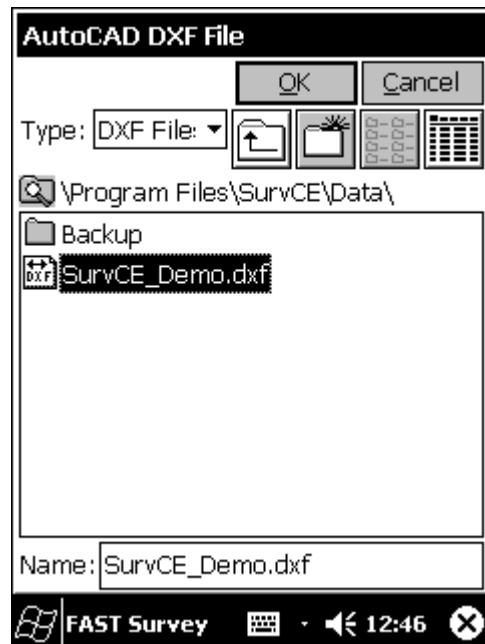
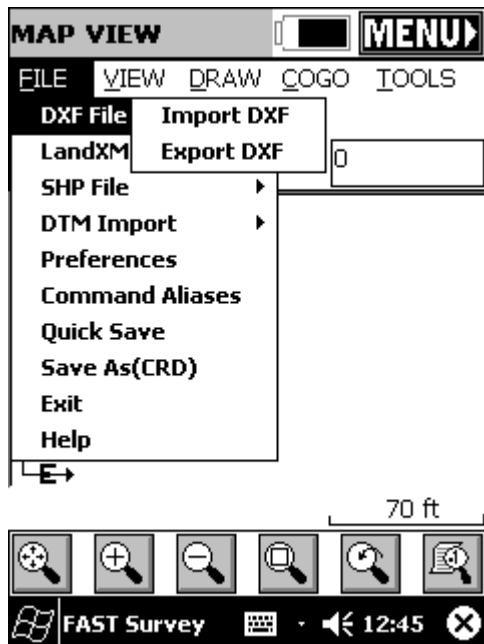
Transfer the DXF file from the PC into the field terminal. The file can be stored anywhere on the field terminal memory, but it will be easier if the file is copied in \program files\SurveCE\Data folder as Fast Survey automatically opens that folder when opening the AutoCAD DXF import window.

Once the file has been copied onto the field terminal memory, run Fast Survey and open a new job.

Select the coordinates system according to coordinate system used for imported DXF file.

Press the MAP key on the screen right top corner in order to open the MAP view.

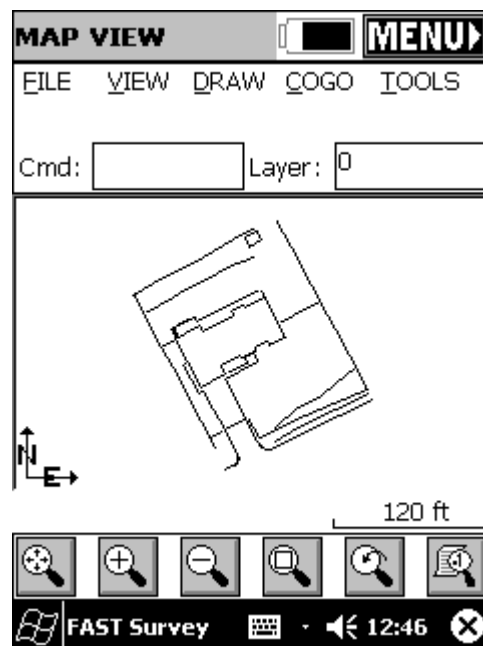
JOB:NewJob		MAP
Surv	COGO	Road
File	Equip	
1 Job	6 Data Transfer	
2 Job Settings	7 Import/Export ASCII	
3 List Points	8 Delete File	
4 Configure Reading	9 Add Job Notes	
5 Feature Code List	0 Exit	
FAST Survey		12:28



Select File/DXF File/ Import DXF ↑

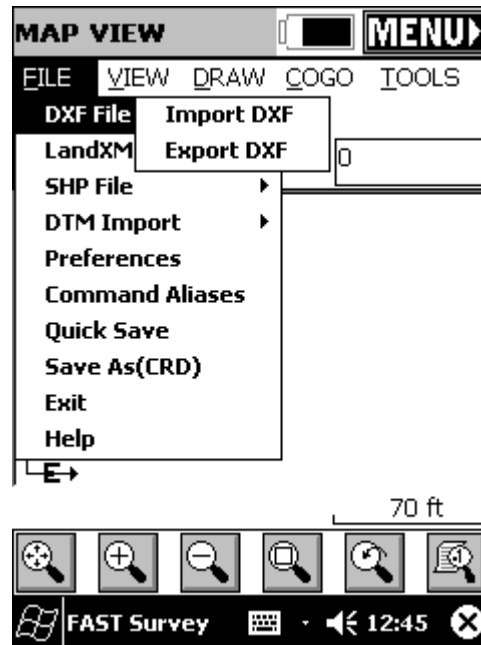
Select the file you want to import and click OK ↑

Once the XF file has been imported, you should see it the MAP screen ↓



2. Export DXF file from Fast Survey into PC

In the Fast Survey MAP view, select FILE/DXF File/ Export :



Enter the file name. The default file name is the job name but you may modify it. Then press OK to convert the file from Carlson format into DXF format.

Use ActiveSync to export the DXF file to the PC.

Notes:

- Only lines and curves are imported or exported, not the associated points.
- If ActiveSync has not been installed on your PC, you may also use Carlson CE Download software to import/export the files. This CE Download tool is part of GNSS studio software package.