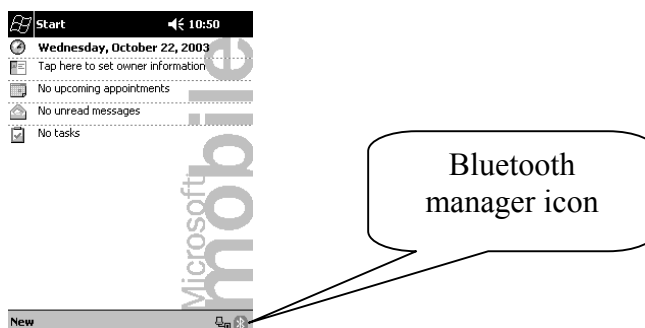


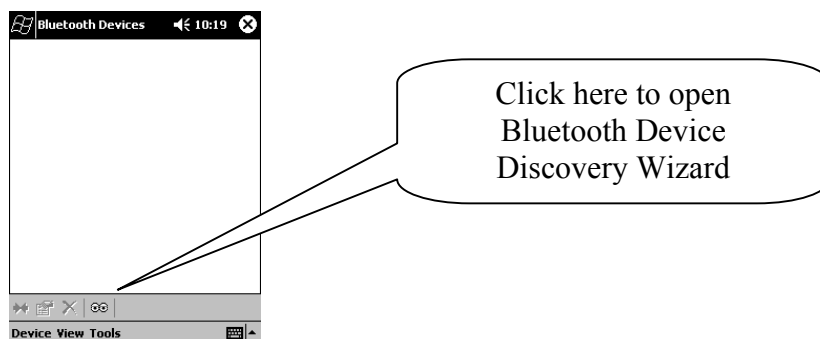
THALES NAVIGATION	Marketing & Technical Tips		
ZMax	N° 2003/02	Oct. 23th	By : Patrick BOURIAUD Checked : Denis BERNARD
Using the Bluetooth connection between Carlson and Zmax			

You first have to switch on all Z-Max units you want to connect to.

1 - You launch the Bluetooth manager on Symbol screen

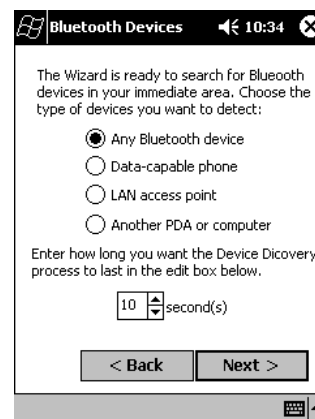


2 - You choose "Advanced feature/Bluetooth Devices". The you should have the following window :



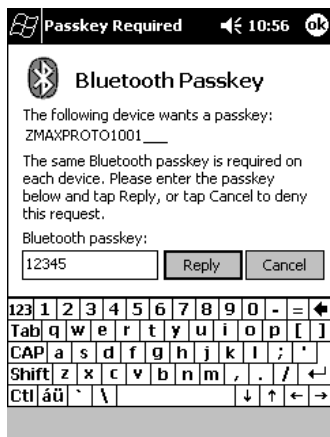
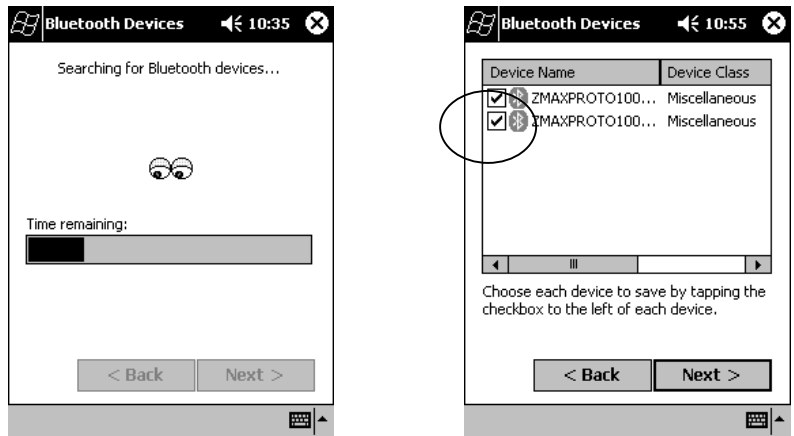
3 - You click on the eyes icon located at the bottom of the screen. We will get the following windows

<<<<<<<<<<<<



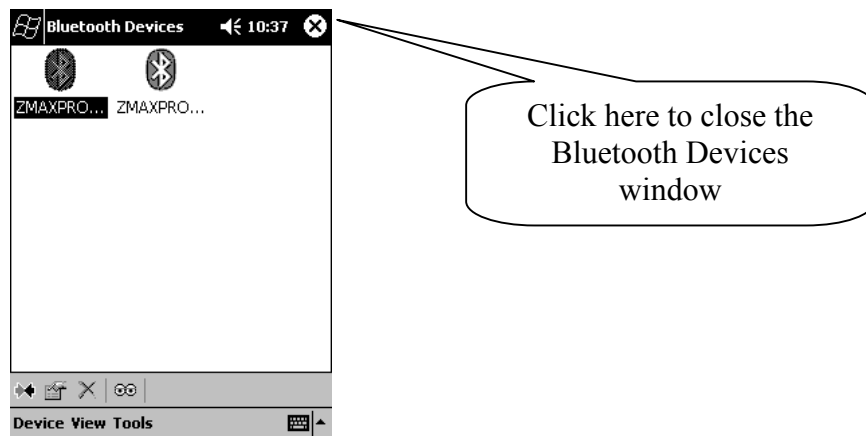
4 - You press "Next" and check "Any Bluetooth device".>>>>>>>>

5 - You press “Next” and check all the Zmax that are found. In the example below 2 receivers has been detected.



6 - You press “Next” and enter the passkey. The passkey in factory default settings is 12345 for any Z_Max and press ‘Reply’ You will have to enter the passkey for all devices checked in the previous window.

7 – When everything is completed, the detected Bluetooth devices appear in the Bluetooth Devices window as shown in the above figure. Then you press the cross on the top right hand corner to close the window and go back to the main menu.



Now your are ready to run Fast Survey and communicate with your Z-Max receivers