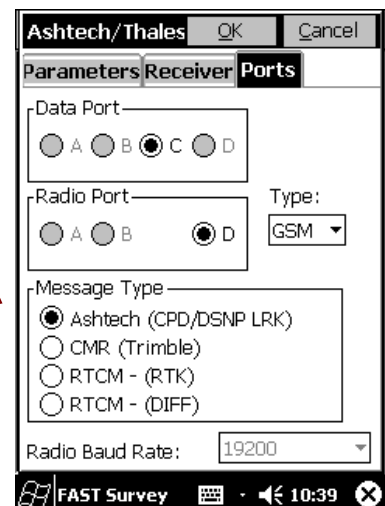


**Getting a GSM connection between  
a Z-Max rover and a Base Station**  
( for Zmax firmware V3.47 & Fast Survey V1.21 Built 32 )



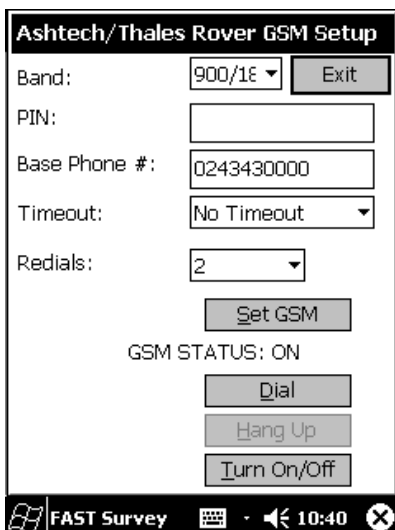
In the following procedure, it is assumed that a data SIM card has been inserted in the comm. Module slot as shown on the above picture, and the comm. Module has been plug to Z-Max unit again. Turn on both the Symbol and the Z-Max.

Run Fast Survey and go the Equip/Configure Rover/Ports tab and select the parameters as described above >>>



**It is compulsory to select Ashtech Message Type for GSM setting up, even if you are working in RTCM mode !!!!**

Click on OK



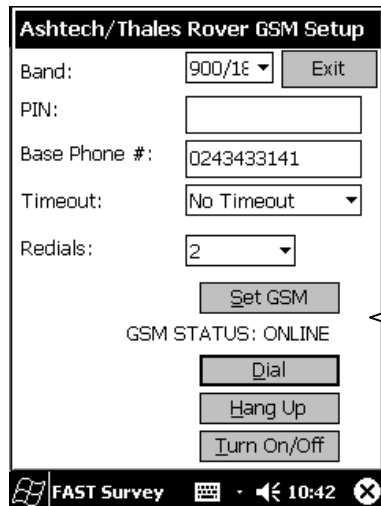
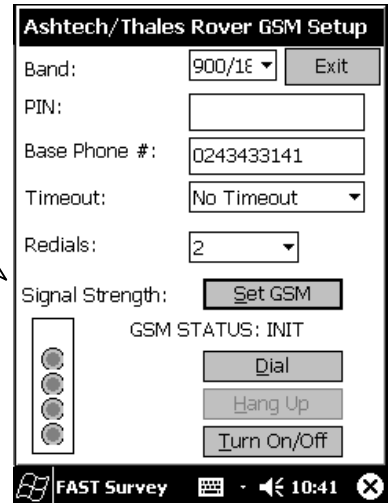
After sending the parameters into the Z-Max, the Symbol displays the GSM set up window. Select the right GSM band (900/1800 in Europe ; 1900 in USA).

Enter the Base station phone number. Press 'Set GSM'

**Important : when entering this menu and if the GSM status is 'Online' or 'Dialling', Turn the GSM Off and turn it On again.**

Once the GSM has been initialised, you can check the GSM signal strength and the GSM Status should be 'INIT'.

*Note that it takes about 30 seconds for the GSM initialisation.*



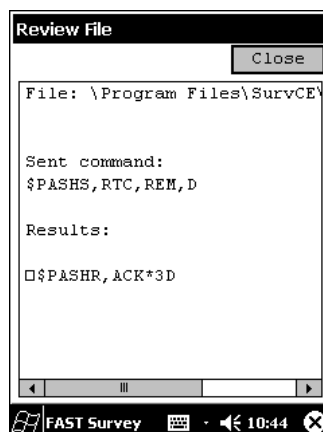
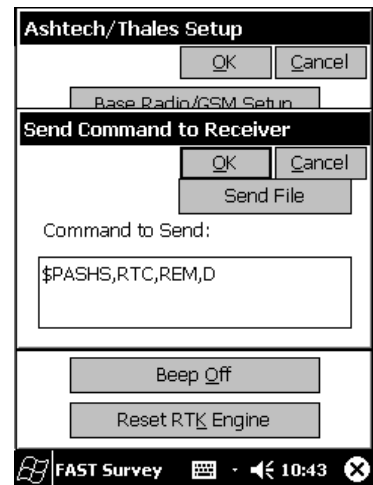
Press 'Dial' to call on the Base station .....  
and wait for GSM status 'ON LINE'

Press Exit and Go to Equip/Receiver Utilities/Send Command to Receiver

**Two cases : A - Connexion to a base station broadcasting RTCM messages 18/19 and/or 20/21**

Enter \$PASHS,RTC,REM,D and press OK >>>>>>>>

You should see the Z\_Max front panel communication light flashing green at the reception rate. The fix light must blink orange (float solution) then green (Fixed solution) after few second.



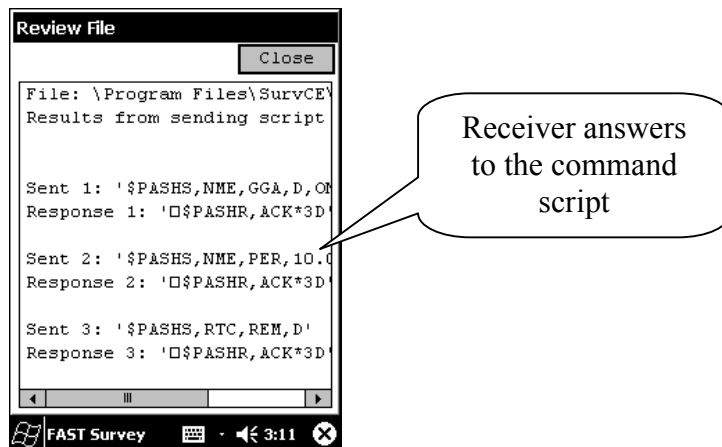
Receiver answer to the command

***B – Connexion to a VBS base station broadcasting RTCM messages & asking for GGA messages.***

Prepare a script file with the 3 commands :

```
$PASHS,NME,GGA,D,ON  
$PASHS,NME,PER,10.0  
$PASHS,RTC,REM,D
```

Store the script file in the Symbol Program Files/SurvCE/data folder.  
In Receiver Utilities/Send Command to receiver, press 'Send File' and select the script file  
You should see the Z\_Max front panel communication light flashing green at the reception rate. The fix light must blink orange (float solution) then green (Fixed solution) after few second.



**Caution : If you want to change one the GSM parameters later, Pin code, phone number, etc. you must turn the GSM OFF in the GSM Set up menu, turn it ON again, and start the above procedure.**