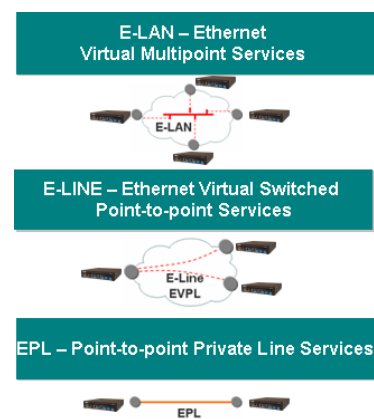


MRV Communications is pleased to announce the latest addition to Intelligent Service Demarcation OS900 series, the OptiSwitch® 904 model.



The OptiSwitch® 904 is a new model that designed based on the same Carrier-Ethernet hardware and software architecture of the OS900 series and comes along the existing models; OS910, OS912, OS930 and OS910-M that released so far.

The positioning of the OS904 is to serve as next-generation Carrier-Ethernet Network Interface Device (NID). The Metro Ethernet Forum (MEF) has been using the term NID to refer to a network element or device that terminates a Metro Ethernet Network. NIDs are usually located at a customer’s premises and provide a demarcation between the customer’s network and the MEN. Such a network element terminates both Ethernet transport and service domains. The OS904 model enables full NID service as defined by the MEF with unmatched flexibility to assure a future-proof solution for any network scenario. The OS904 incorporates the same MRV’s Linux-based Master-OS™ modular operating software with its rich features-set and service aware capabilities.

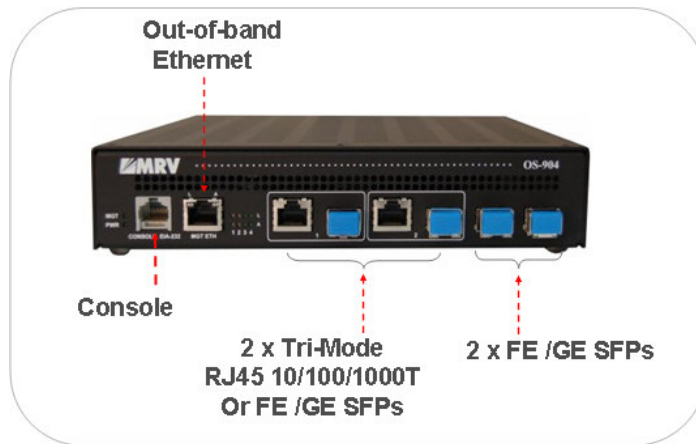


Product Highlights and Advantages

- Supports a wide range of business services, and cellular traffic backhaul applications
- Outstanding variety for Optical Layer 1 & Layer 2 VPN Services
 - EPL, E-Line, E-Tree and E-LAN
 - Point-to-point, point-to-multipoint and multipoint-to-multipoint
- Flexible Tri-mode, protected UNI/NNI interfaces
 - 2 Tri-mode built-in RJ45 10/100/1000BaseT or 100FX/1000FX SFP customer facing ports and 2 100FX/1000FX SFP network ports
 - Same SFP port can host 100FX & 1000FX SFPs - same device for all scenarios
 - Support for jumbo frames on all ports up to 16000 bytes
- Advanced traffic management with line rate performance
 - Hierarchical QoS to enable unique SLAs for service providers
 - Flexible policing per any classification criteria
 - Low-latency and precise service rates
- Unmatched flexibility of Ethernet Virtual Circuits
 - Selective Q-in-Q and VLAN translation
- End-to-end Ethernet service OAM with hardware-based loopbacks to monitor SLAs
 - Standard compliant - IEEE802.1ag / ITU-T Y.1731
 - Simplifies, monitors and troubleshoots services/applications
 - Promptly determines service affecting problem
- Link and Service protection at sub50msec
 - SONET-like recovery and deterministic SLA
- Small form factor design for space saving
- Best price/performance in the industry

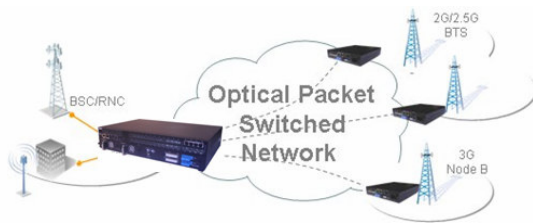


OptiSwitch®904 - Product Snapshot and Interfaces

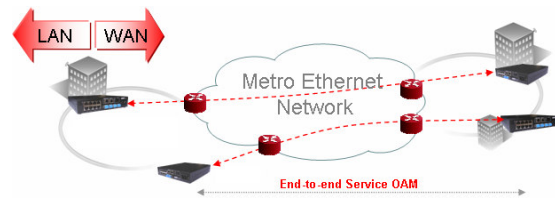


OptiSwitch®904 - Applications and Connectivity Modes

Supported topologies, services and protection: direct, dual-homed, dual-aggregate & rings

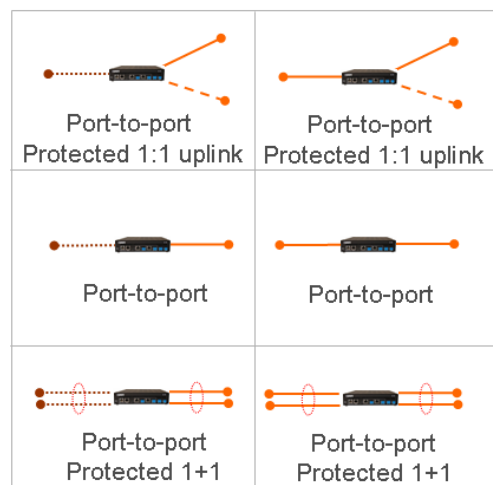
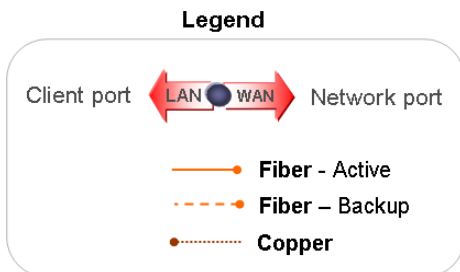


Mobile Backhaul - Carrier-Ethernet Application



Metro Ethernet- Carrier-Ethernet Application

NID Connectivity Modes



OptiSwitch®904 - Competitive Advantage

Differentiate your Service



Think outside the box...



OS904 Service Demarcation



NID



L2 VPN



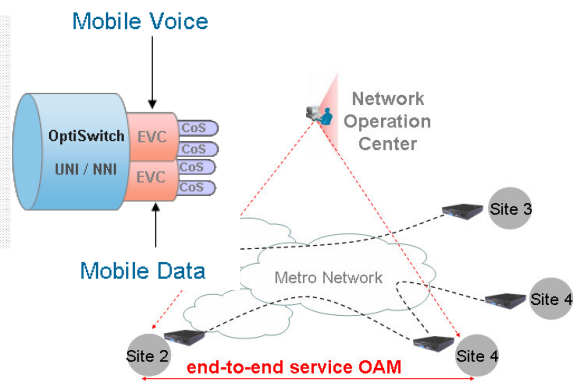
OAM



H-QoS

A single OS904, serving as a demarcation device, can facilitate the provisioning of revenue generating new value-added services thanks to its wide spectrum of service features. MRV incorporates IEEE, ITU and MEF standards, and offers complete control to simplify deployment and management, while maintaining full interoperability and visibility into customer's and provider's networks. Design based on state-of-the-art wire-speed technology, the OS904 Series offers a future proof solution for any Next Generation Carrier-Ethernet Network; fitting various scenarios and business subscriber SLAs.

The OS904 is fully confirms with MEF UNI/NID specifications and extends them by far. Such competitive advantage enables wireless and wireline operators differentiate their Metro Ethernet services with highest SLAs and future-proof flexibility



Product Ordering Code

P/N	Description
OS904/AC-1	2 x Tri-Mode 100FX/1000FX SFP or RJ45 10/100/1000BaseT and 2 x 100FX/1000FX SFP. 19" bracket included.

Contact: Zeev Draer - zdraer@mrv.com