



GBIC-to-GBIC Media Module



Overview

Extending the boundaries of media connectivity, the Fiber Driver™ GBIC-to-GBIC Media Module from MRV Communications is a protocol independent, single channel GBIC-to-GBIC connectivity solution. It defines a new level of deployment flexibility and inventory management, enabling the implementation of an extremely wide range of network infrastructure solutions from media conversion and signal boosting to lambda conversion, Wave Division Multiplexing (WDM) and Optical Add/Drop Multiplexing (OADM).

The GBIC-to-GBIC Media Module offers plug-n-play ease of installation. Simply place the module into a powered Fiber Driver chassis, insert the GBIC transceivers required for the protocol and distance of the application, and connect to the network. Changing the connection type later on only requires changing the transceivers. With GBIC hot swappable functionality there is virtually no down time involved.

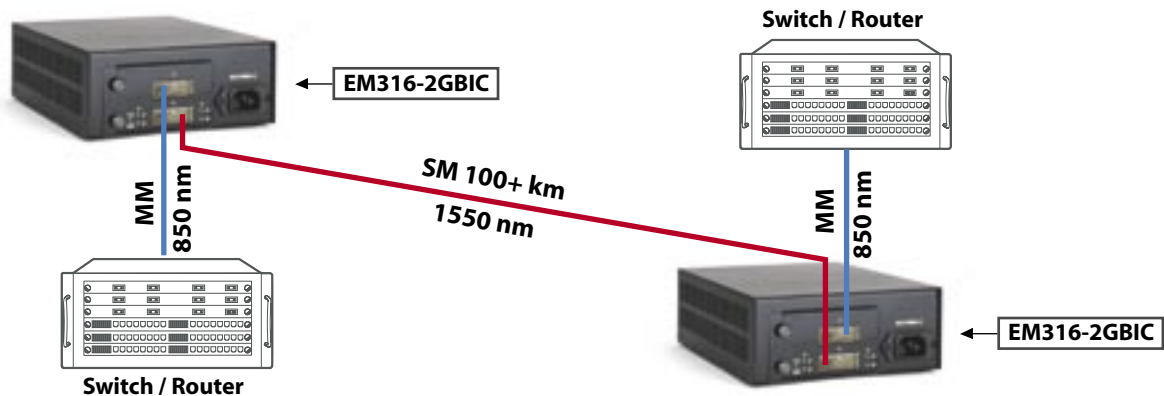
Features

- Provides GBIC-to-GBIC interface connectivity
- Data rate independent, protocol transparent (protocol determined by choice of GBICs)
- Greater flexibility and scalability
 - Add/Change optics and adjust data rates as needed
 - Maintain single item inventory
- MSA compatible
 - Choose the best-of-breed transceivers from MRV Communications or vendor of choice
- Performs 2R data signal conditioning
- SNMP manageable, MegaVision Web™ supported

Applications

- Media conversion
- Signal boosting
- Lambda conversion
- CWDM
- DWDM
- OADM

Typical Application: Multimode to Singlemode Conversion



Datasheet

Because GBIC transceivers are portable they can be easily used again at different locations for different applications, maximizing the investment made in them and reducing the need for on-hand inventory. The industry's non-proprietary MultiSource Agreement (MSA) ensures that a wide selection of system compatible GBIC is available from multiple sources, including MRV Communications.

The GBIC-to-GBIC Media Module is data rate independent and performs 2R – reshape and retransmit – conditioning of the data signal. Any protocol is supported, including Fast and Gigabit Ethernet, FDDI, ESCON, SONET (OC-3, OC-12, OC-48 and above), Fibre Channel (1 Gbps & 2 Gbps), Serial Digital Video Interface (SDI) SMPTPE-269 and SMTPE-292, DVB, HDTV (1.5 Gbps), and many others. The GBIC pair selected determines the protocol.

With an externally connected Mux/Demux unit such as the 4- or 8-channel Fiber Driver CWDM Passive Mux/Demux (EM316PA4N / EM316PA8N), the GBIC-to-GBIC Media Module can be used as a WDM solution building block

configured to the desired protocol/data rate and provided with GBIC transceivers of the required wavelengths. Deployed along a WDM trunk at customer service points using MRV Communications' passive OADM technology, the GBIC-to-GBIC Media Module can be used to create a sophisticated Add/Drop topology.

The EM316-2GBIC fully supports the GBIC standard. It is a hot swappable, single-slot module that can be placed in any powered Fiber Driver chassis. Through the Fiber Driver Network Management Module, the EM316-2GBIC is SNMP manageable and fully supported through the graphical user interface (GUI) of MegaVision Web™, MRV Communications' comprehensive Network Management System (NMS).

For additional information on this or any of the full line of MRV Communications products, including pricing and availability, contact your MRV Communications representative.

Physical Specifications:

Operating Temperature Range* (AC):	0°C to 50°C (32°F to 122°F)
Operating Temperature Range* (DC):	0°C to 70°C (32°F to 158°F)
Storage Temperature:	-10°C to 60°C (-14°F to 140°F)
Relative Humidity:	85% maximum, non-condensing
Physical Dimensions:	50 mm x 75 mm x 175 mm deep (2" x 3" x 7" deep)
Weight:	Approximately 272 g (9.6 oz)
Emission Compliance:	FCC - PART 15, SUBPART B, 1999, CLASS A; CE MARK - EN 50081-1:1992; EN 50082:1997; EN 55024:1998; EN 55022:1998; AS/NZS 3548:1995

*Operating Range listed is for the module only. Operating Range of pluggable interface(s) used may differ.

Ordering Info	Part Number	Function	Data Rate	Connectors	Wavelength	Budget	Range
	EM316-2GBIC	Protocol independent GBIC-to-GBIC media module	Data rate independent, protocol transparent	GBIC (x2)	N/A (transceiver dependent)	N/A (transceiver dependent)	N/A (transceiver dependent)

MRV has more than 50 offices throughout the world. Addresses, phone numbers, and fax numbers are listed at www.mrv.com. Please e-mail us at sales@mrv.com or call us for assistance.

MRV (West Coast USA)
20415 Nordhoff St.
Chatsworth, CA 91311
800-338-5316
818-773-0900

MRV (East Coast USA)
295 Foster St.
Littleton, MA 01460
800-338-5316
978-952-4700

MRV (International)
Business Park Moerfelden
Waldeckerstrasse 13
64546 Moerfelden-Walldorf
Germany
Tel. (49) 6105/2070
Fax. (49) 6105/207-100

All statements, technical information and recommendations related to the products herein are based upon information believed to be reliable or accurate. However, the accuracy or completeness thereof is not guaranteed, and no responsibility is assumed for any inaccuracies. Please contact MRV Communications for more information. MRV Communications and the MRV Communications logo are trademarks of MRV Communications, Inc. Other trademarks are the property of their respective holders.