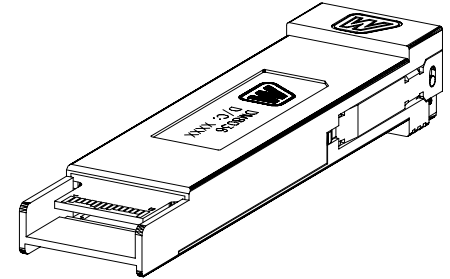
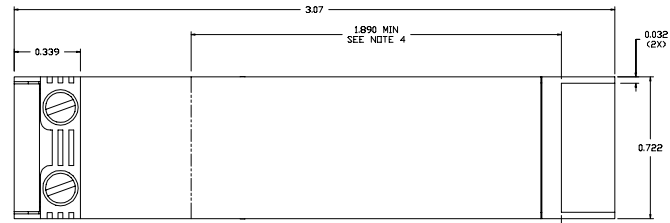
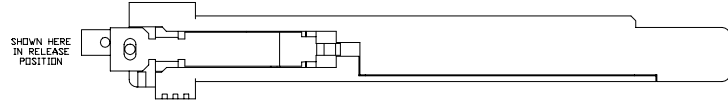
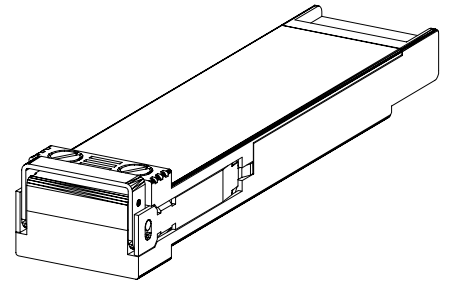
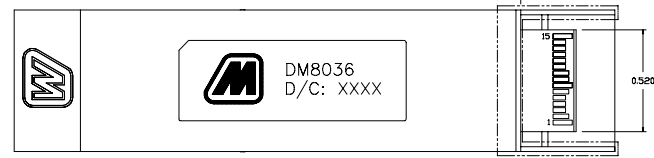
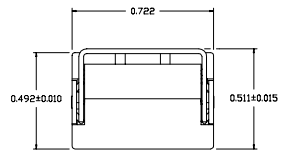
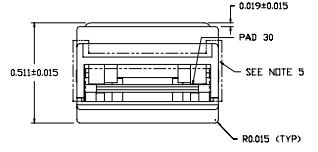
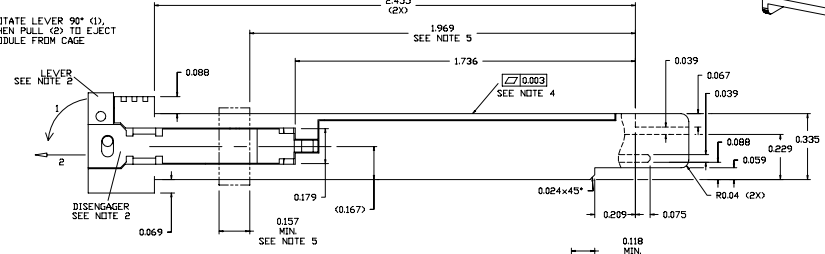


REVISION AND CHANGE EFFECTIVITY DATE				
LTR.	ECN	DESCRIPTION	DATE	APP'D.



ROTATE LEVER 90° (1), THEN PULL (2) TO EJECT MODULE FROM CAGE



NOTES:

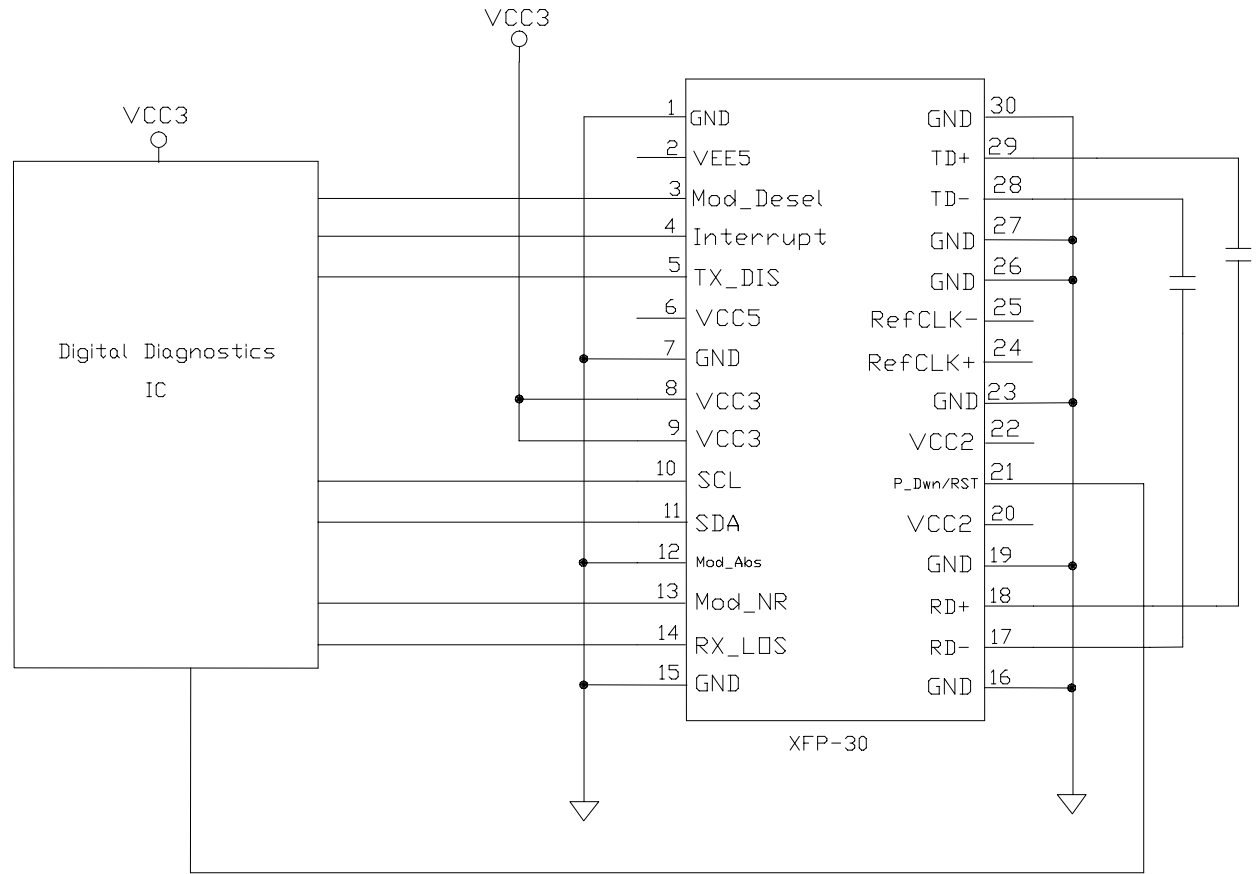
- 1) HOUSING MATERIAL: ZINC ALLOY
PLATING: NICKEL OVER COPPER
- 2) LEVER AND DISENGAGERS: STAINLESS STEEL
- 3) PCB-0.039" THICK; 30µin. MIN GOLD PLATING OVER
50µin. MIN NICKEL ON CONTACT AREA
- 4) FLATNESS APPLIES FOR INDICATED LENGTH
SURFACE IS THERMALLY CONDUCTIVE
- 5) INDICATED SURFACES (ALL 4 SIDES) ARE CONDUCTIVE FOR CONNECTION TO CHASSIS GROUND
- 6) SCREWS: STAINLESS STEEL

DO NOT SCALE DRAWING.

EXPERIMENTAL NO:		DIVISION ASSIGNED: dataMate Division	
TOLERANCE UNLESS OTHERWISE SPECIFIED		DRAWN BY: A. PIRILLIS DATE: 09/28/07	
MATERIAL: SEE NOTES		CHECKED BY: J. NOWAK DATE: 09/28/07	
FINISH: SEE NOTES		ENGR. APPROVAL: B. SKEPNEK DATE: 09/28/07	
APPROVED BY: A. CHIAPPETTA DATE: 09/28/07		TITLE: XFP LOOPBACK MODULE	
PART NO. CLASSIFICATION:		SIZE: C	CODE IDENT.:
THE INFORMATION DISCLOSED IN THIS DOCUMENT IS PROPRIETARY TO METHODE ELECTRONICS, INC. AND MAY NOT BE USED FOR MANUFACTURE OR ANY OTHER PURPOSE WITHOUT THE WRITTEN CONSENT OF METHODE. DETAILS SUBJECT TO CHANGE AS THEY MAY CHANGE WITH RESPECT TO PRODUCT IMPROVEMENT.		DWG. NUMBER: DM8036	Rev.:
SCALE:		SHT. 1 OF 2	



REVISION AND CHANGE EFFECTIVITY DATE				
LTR.	ECN	DESCRIPTION	DATE	APP'D.



DO NOT SCALE DRAWING.



EXPERIMENTAL NO:		DIVISION ASSIGNED: dataMATE Division	
TOLERANCE UNLESS OTHERWISE SPECIFIED METRIC INCHES DEC: XX ± .010 FRACTIONS: XXX ± .005 ANGLES: ± TOOLING DWG: <input type="checkbox"/> PART DWG: <input type="checkbox"/> BREAK SHARP EDGES REMOVE ALL BURRS		MATERIAL: SEE NOTES FINISH: SEE NOTES	
DRAWN BY: A. PIRILLIS CHECKED BY: J. NOWAK ENGR. APPROVAL: B. SKEPNEK APPROVED BY: A. CHIAPPETTA		DATE: 09/28/07 DATE: 09/28/07 DATE: 09/28/07 DATE: 09/28/07	
THE INFORMATION DISCLOSED IN THIS DOCUMENT IS PROPRIETARY TO METHODE ELECTRONICS, INC. AND MAY NOT BE USED FOR MANUFACTURE OR ANY OTHER PURPOSE WITHOUT THE WRITTEN CONSENT OF METHODE. CHANGES SUBJECT TO CHANGE AS THEY MAY OCCUR WITH RESPECT TO PRODUCT IMPROVEMENT.		TITLE: XFP LOOPBACK MODULE SIZE: C CODE IDENT.: DWG. NUMBER: DMB036 PART NO. CLASSIFICATION: SCALE: Rev. OF 2	