












Series	EonStor (ES)				
Model	ES A16U-G1A3	ES A16F-G1A2	ES A16F-R1A2	ES U16U-G3A3-4/6	ES U16U-G3J3
					
Application	RAID Subsystem (SCSI-SATA)	RAID Subsystem (FC-SATA)	RAID Subsystem (FC-SATA)	RAID Subsystem (SCSI-SCSI)	JBOD
Form Factor	3U Rackmount	3U Rackmount	3U Rackmount (Redundant)	3U Rackmount	3U Rackmount
Hot Swap Trays	16	16	16	16	16
CPU Type	64-bit CPU w/ 256kB L2 Cache	64-bit CPU w/ 256kB L2 Cache	64-bit CPU w/ 256kB L2 Cache	64-bit CPU w/ 256kB L2 Cache	N/A
Cache Memory	128MB – 1GB	128MB – 1GB	128MB – 1GB	128MB – 1GB	N/A
RAID Levels	0,1,1(0+1),3,5,10,30,50	0,1,1(0+1),3,5,10,30,50	0,1,1(0+1),3,5,10,30,50	0,1,1(0+1),3,5,10,30,50	0,1,1(0+1),3,5,10,30,50
Host Channel Interface	2 x SCSI-160	2 x 2Gb/s Fibre	4 x 2Gb/s Fibre	2 x SCSI-160	N/A
Expansion Port	N/A	N/A	2 x 2Gb/s Fibre	Yes	Yes
Drive Interface	Serial ATA (or Parallel ATA)	Serial ATA (or Parallel ATA)	Serial ATA (or Parallel ATA)	2 x SCSI-160	SCSI-160
LUN Support	1024	1024	1024	1024	N/A
Hot Swap PSU	2 x 460W	2 x 460W	2 x 460W	2 x 460W	2 x 460W
Hot Swap Fan Modules	2	2	2	2	2
RS-232C Supported	2 (Audio Jack)	2 (Audio Jack)	4 (Audio Jack)	1	N/A
LAN Connectivity	1 x 10/100M Ethernet	1 x 10/100M Ethernet	2 x 10/100M Ethernet	1 x 10/100M Ethernet	N/A
RAIDWatch GUI	Yes	Yes	Yes	Yes	Yes

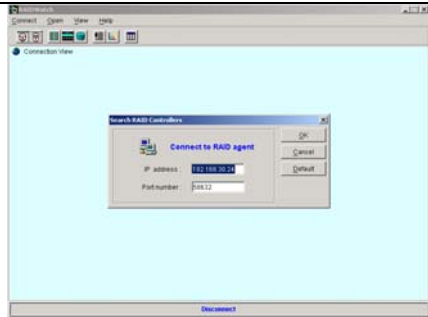
Series	EonStor (ES)			EonRAID (ER)	
Model	ES F16F-S	ES F16F-R	ES F16F-S2J2/R2J2	ER 2510FS-4/6S	ER 2510FS-4/6RH
					
Application	RAID Subsystem (FC-FC)	RAID Subsystem (FC-FC)	JBOD	RAID Controller Head (FC-FC)	RAID Controller Head (FC-FC)
Form Factor	3U Rackmount	3U Rackmount (Redundant)	3U Rackmount	1U Rackmount	1U Rackmount (Redundant)
Hot Swap Trays	16	16	16	N/A	N/A
CPU Type	64-bit CPU w/ 256kB L2 Cache	64-bit CPU w/ 256kB L2 Cache	N/A	64-bit CPU w/ 256kB L2 Cache	64-bit CPU w/ 256kB L2 Cache
Cache Memory	128MB – 1GB	128MB – 1GB	N/A	128MB – 1GB	128MB – 1GB
RAID Levels	0,1,1(0+1),3,5,10,30,50	0,1,1(0+1),3,5,10,30,50	0,1,1(0+1),3,5,10,30,50	0,1,1(0+1),3,5,10,30,50	0,1,1(0+1),3,5,10,30,50
Host Channel/IO Interface	2 x 2Gb/s Fibre	4 x 2Gb/s Fibre	N/A	4/6 x 2Gb/s Fibre	4/6 x 2Gb/s Fibre
Expansion Port	Yes	Yes	Yes	N/A	N/A
Drive Interface	2 x 2Gb/s Fibre	2 x 2Gb/s Fibre	2Gb/s Fibre	N/A	N/A
LUN Support	1024	1024	N/A	1024	1024
Hot Swap PSU	2 x 460W	2 x 460W	2 x 460W	2 x 250W	2 x 250W
Hot Swap Fan Modules	2	2	2	1	2
RS-232C Supported	1	2	2	1	2
LAN Connectivity	1 x 10/100BaseT Ethernet	2 x 10/100BaseT Ethernet	N/A	1 x 10/100M Ethernet	2 x 10/100M Ethernet
S.E.S Support	Yes	Yes	Yes	Yes	Yes
RAIDWatch GUI	Yes	Yes	Yes	Yes	Yes
Remark	None	None	Single/Dual S.E.S controller board	None	None

ATA Series	IFT-6330-12U3D	IFT-6330-12F2D	IFT-6330-8U3D	IFT-6330-8F2D	IFT-6230-8U3D
					
Application	RAID Subsystem (SCSI-ATA)	RAID Subsystem (FC-ATA)	RAID Subsystem(SCSI-ATA)	RAID Subsystem (FC-ATA)	RAID Subsystem(SCSI-ATA)
Platform	3U Rackmount	3U Rackmount	3U Rackmount	3U Rackmount	Tower
Hot Swap Trays	12	12	8	8	8
CPU Type	64-bit CPU w/ 256kB L2 Cache	64-bit CPU w/ 256kB L2 Cache	64-bit CPU w/ 256kB L2 Cache	64-bit CPU w/ 256kB L2 Cache	64-bit CPU w/ 256kB L2 Cache
Cache Memory	128MB – 1GB	128MB – 1GB	128MB – 1GB	128MB – 1GB	128MB – 1GB
RAID Levels	0,1,1(0+1),3,5,10,30,50	0,1,1(0+1),3,5,10,30,50	0,1,1(0+1),3,5,10,30,50	0,1,1(0+1),3,5,10,30,50	0,1,1(0+1),3,5,10,30,50
Host Channel Interface	2 x SCSI-160	2 x 2Gb/s Fibre	2 x SCSI-160	2 x 2Gb/s Fibre	2 x SCSI-160
Drive Interface	ATA-66/100/133	ATA-66/100/133	ATA-66/100/133	ATA-66/100/133	ATA-66/100/133
LUN Support	1024	1024	1024	1024	1024
Hot Swap PSU	2 x 350W	2 x 350W	2 x 250W	2 x 250W	2 x 250W
Hot Swap Fan Modules	2	2	2	2	2
RS-232C Supported	1	1	1	1	1
LAN Connectivity	1	1	1	1	1
RAIDWatch GUI	Yes	Yes	Yes	Yes	Yes

Infortrend Products

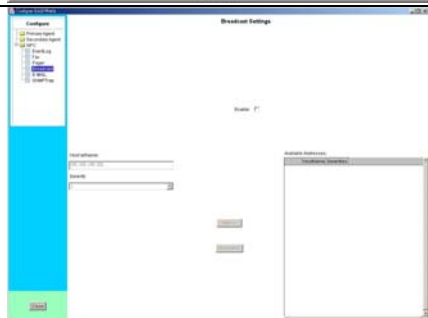
Infortrend is a leading RAID Controller manufacturer. Infortrend's RAID products continually prove their reliability and stability in the most rigorous storage environments. Leading edge firmware security features like "Media Scan," a low quality drive handling tool, shows our continued commitment to meeting our customers' needs. Infortrend considers the integrity of their customer's data to be a high priority. This commitment drives us to continue developing leading edge RAID appliances that provide increased data security and increased reliability.

Infortrend's large variety of available RAID subsystems ensures that users will have access to a subsystem that will meet their unique individual requirements. Each subsystem comes with Infortrend's fully featured, highly acclaimed RAID controllers embedded within. The presence of these controllers ensures unprecedented data security for the subsystems. Easy to use hot-swappable mechanisms ensure that drives and other critical subsystem components can be easily replaced and maintained at all times. Advanced firmware features and an easy to use Java-based GUI called RAIDWatch ensures the system can be monitored at all times.



About RAIDWatch

RAIDWatch is an easy-to-use, Java-based GUI RAID management software designed specifically for use with Infortrend's subsystems and controllers. Operating under Java 2.0 (Java Run-time Environment 1.2 or 1.3), RAIDWatch provides a constant real-time support of the current RAID status, errors, events, and capacity.



Notification Processing Center (NPC)

The NPC is a powerful module that runs as a background **Disk and Executive Monitor** (DAEMON) independent from RAIDWatch that can, itself, be installed redundantly on different hosts. It is used for event notification over:

1. Email
2. Fax
3. LAN broadcast,
4. SNMP traps, etc.

The NPC helps to prevent blind time and keeps a user constantly informed as to the status of the storage management subsystem.

Media Scan

Media Scan is a leading edge **Intelligent Drive Handling** tool that is able to retrieve data for degraded and damaged hard disks. Media Scan is the latest data security feature in the latest revision of Infortrends controller embedded firmware. Media Scan has been described "as an efficient and effective data security firmware feature" that will provide Infortrend RAID controller users with "unprecedented levels of data security."

Intelligent Drive Handling

Intelligent drive handling will occur in both the degraded mode and during the rebuild process. Optional write-verify for normal writes, rebuild writes and LD initialization is also available. Further intelligent drive handling comes in the transparent resetting of hung hard drives. Power-failure management and bad drive handling during LD expansion provide further data security.

Other Firmware Features

Infortrends latest firmware release includes the following leading edge features:

1. Up to 64TB per LD.
2. Up to 1024 LUN for host
3. Intelligent drive handling
4. Up to 1GB SDRAM
5. Rolling upgrade the firmware of redundant controller
6. Variable rebuild priority to meeting variety applications
7. Dual ASIC architecture for separated memory access from I/O and CPU.
8. Tunable system bus behavior for higher compatibility with all components.
9. Support SNMP v2.0 MIB with get and set function.

Contact Us

**Asia Pacific
(International headquarter)**
Infortrend Technology, Inc.
 8F, No. 102 Chung-Shan Rd., Sec. 3
 Chung-Ho City, Taipei Hsien, Taiwan
Tel: (886)-2-2226-0126
Fax: (886)-2-2226-0020
sales@infortrend.com.tw
support@infortrend.com.tw
<http://www.infortrend.com.tw>

North and South America

Santa Clara Offices
 3150 Coronado Drive
 Santa Clara, CA 95054, USA
Tel: (408) 988-5088
Fax: (408) 988-6288
sales@infortrend.com
support@infortrend.com
<http://www.infortrend.com>

China

Infortrend Technology, Limited
 Room 1236 Tower C Corporate
 Square
 No. 35 Financial Street Xicheng
 District
 Beijing China 100032
Tel: (86)-10-88091540
Fax: (86)-10-88092126
sales@infortrend.com.cn
support@infortrend.com.cn
<http://www.infortrend.com.cn>

Europe

Infortrend Europe Limited
 Ground Floor, Chancery House
 St. Nicholas Way, Sutton,
 Surrey, SM1 1JB, United Kingdom
Tel:+44-(0)20 8770 1838
Fax:+44-(0)20 8770 7409
sales@infortrend-europe.com
support@infortrend-europe.com
<http://www.infortrend-europe.com>