

11011010110

**PRODUCT CATALOG**

**SPRING/FALL 2002**



**ENTERASYS**  

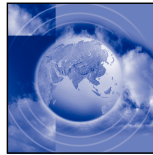
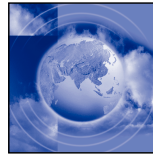
---

**NETWORKS™**

*“Enterasys Networks earned the Best-of-Breed award based on the criteria of performance, flexibility, ease of use, enterprise readiness and solution integration.”*

*—Curtis Franklin, managing editor/technology,  
InternetWeek  
on the RoamAbout wireless solution  
March 30, 2001*

## ABOUT ENTERASYS NETWORKS



Enterasys Networks is a unique company in the IT industry, combining a single market focus with a strong technology heritage to provide the most secure, highly available and mobile infrastructures for global enterprise-class customers.

With more than 15 years of technological development and innovation, Enterasys speaks with the voice of experience, and an understanding of what enterprise customers need to further improve the way they do business. No wonder Enterasys is fast becoming the most trusted network provider for IT managers and CIOs everywhere.

We're pleased to present our latest product catalog, featuring the complete line of high-performance hardware and software for today's enterprise networks. For additional information—including pricing and availability—please contact your Enterasys representative or authorized reseller. Also, visit us on the web at [enterasys.com](http://enterasys.com).

## TABLE OF CONTENTS

<b>Best-of-Breed Networks</b> .....	4
<b>Security, Availability and Mobility</b> .....	5
<b>Switch Routers</b> .....	8
X-Pedition™ ERI6 .....	9
X-Pedition 8600 .....	12
X-Pedition 8000 .....	14
Modules for the 8600 and 8000 .....	16
X-Pedition 2400 .....	18
X-Pedition 2100 .....	21
X-Pedition 2000 .....	23
X-Pedition 1805 .....	25
X-Pedition 1850 .....	27
<b>Multilayer Switches</b> .....	29
Matrix™ E7 .....	30
Matrix E6 .....	32
Matrix E5 .....	34
Matrix Modules .....	36
Matrix E1 .....	39
<b>Workgroup Switches</b> .....	43
Vertical Horizon™ .....	44
<b>VPNs</b> .....	50
Aurorean™ Network Gateway 7050 and 3000 Series .....	51
Aurorean Policy Server 7000 and 3000 Series .....	53
Aurorean Network Gateway 1000 ..	55
Aurorean Client Software .....	57

## TABLE OF CONTENTS

<b>Wireless LANs</b> . . . . .	59
RoamAbout™ R2 . . . . .	60
RoamAbout Access Point 2000 . . . . .	63
RoamAbout Outdoor Wireless . . . . .	66
<b>Security Solutions</b> . . . . .	70
Dragon™	
Intrusion Detection System . . . . .	71
<b>Enterprise Management</b> . . . . .	75
NetSight™ Atlas Console . . . . .	76
NetSight Atlas Console Lite . . . . .	78
NetSight Atlas Access Control List (ACL) Manager . . . . .	80
NetSight Atlas Inventory Manager . . . . .	83
NetSight Atlas Policy Manager . . . . .	85
NetSight Atlas Gateway Monitoring Tool . . . . .	87
NetSight Element Manager . . . . .	89
<b>Global Service and Support</b> . . . . .	91
Availability Services . . . . .	94
<b>Enterasys Partner Program</b> . . . . .	97

## BEST OF BREED SOLUTIONS



PC Magazine Editors' Choice

### More than ever before, your business depends on the network...so why settle for anything but the best?

If you're like most organizations, the network is your lifeblood. You rely on it for everything from e-mail and customer support to enterprise resource planning and revenue generation. With so much riding on the network, you simply can't afford to settle for a "middle-of-the-road" solution.

With a long-standing record of outperforming the competition in third-party testing as well as numerous industry awards to our credit, Enterasys products provide the superior individual performance you're looking for—while together, they form the foundation for a powerful infrastructure that supports your business now and for the long run.

### Recent recognition includes...

- Dragon intrusion detection system named "Editors Choice" by *Network Computing* and winner of 2002 Information Security Excellence Award
- X-Pedition switch router and Matrix multilayer switch platform named "prime candidates for any wiring closet or network edge" in test by *InternetWeek*
- RoamAbout wireless solution named "Best of Breed" by *InternetWeek* for two years in a row
- RoamAbout earned 8wire's "seal of approval" for wireless LANs with 4 1/2 stars out of a possible 5
- RoamAbout Wireless named "Editor's Choice" by *PC Magazine UK*
- X-Pedition named "Best of Breed" and "InternetWeek Approved" by *InternetWeek*
- X-Pedition named #1 in Layer 3 switching for nine consecutive quarters by Dell 'Oro Group
- X-Pedition and RoamAbout named "Product of the Year" by *Network Magazine*
- RoamAbout named "Product of the Year" by *Network Computing, Asia*
- Aureorean Virtual Network products named "Best of Show" at NetWorld+Interop 2000
- Aureorean Virtual Network products named "Hot Product of the Year" for WAN remote access by *Data Communications*
- RoamAbout named a 2001 finalist by *Network Computing* for its "Well-Connected" Award

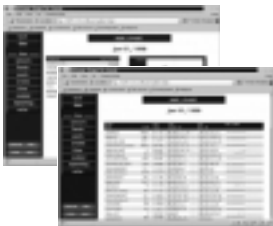
## SECURITY, AVAILABILITY, MOBILITY



*Comprehensive access control lists on our X-Pedition switch routers let you filter out unauthorized traffic without sacrificing performance for those with authorization.*



*Our XSR 1800 series security router combines VPN, firewall and IP routing all in a single device—perfect for the branch office.*



*The award-winning Dragon intrusion detection system monitors your entire network—including servers and firewalls—and instantly alerts you of any suspicious or malicious activity.*



*Our RoamAbout wireless solution guards against network abuse with support for Rapid re-Keying (RrK), 128-bit encryption and 802.1x user authentication.*

*All of our Matrix multilayer switching solutions support authentication to lock out unauthorized users right at the entry point.*



### Three Pillars of Success

Successful businesses the world over rely heavily on the provision of electronic content to users, customers, even suppliers. It only makes sense since content is now king, whether it's e-mail, web commerce, supply chain management, digital x-ray imaging, education records, etc. The efficient delivery of this content continues to be high priority for just about every CIO and network manager.

Enterasys Networks stands alone in the industry for the simple fact that we've recognized **Security, Availability and Mobility** as three important pillars of our solutions portfolio. No other vendor has been able to clearly identify the key issues facing the enterprise market. These three pillars are based on the growing demands voiced by enterprise-class customers and are supported by proven features found in our industry-leading solutions.

### Enterprise Security—Internal and External

Network security is now a high priority among CIOs and network managers especially with so much vital company information being stored and exchanged electronically. The inability to control this information poses a real threat to the future of both private and public sector businesses.

Enterasys Networks' Secure Harbour framework is the industry's first holistic approach to information security, protecting companies from the threat inside and outside of their physical boundaries. We're able to do this through...

- User authentication at the points of network entry
- Intruder detection systems to seek out potential threats
- Bandwidth rate limiting to control and deter attacks
- "Lock down" destabilizing traffic and activities—internal and external
- Highly secure global VPN solutions
- Scale to any size company or traffic load
- Resolve abuses and apply prevention
- Improve end-point security through advanced network control and monitoring features

Through features like these and others found in our broad product line, Secure Harbour offers an all-encompassing approach to information security, and not a traditional point-product solution.

## SECURITY, AVAILABILITY, MOBILITY



*Pinpoint application control on the X-Pedition switch router ensures that users have on-demand access to the most important resources.*



*The Aurorean Virtual Network solution addresses all points of possible failure with the exclusive Auto Link Recovery.*

*A seamless indoor/outdoor wireless platform, RoamAbout provides uninterrupted network access even when going from building to building.*



*Our Matrix switch family features fully redundant power and a distributed architecture to eliminate any single point of failure.*



*Highly graphical, highly intuitive, NetSight Atlas management applications pinpoint network alarms ensuring five-9s availability across the entire enterprise.*

### Network Availability—24x7x52

Regardless of the exact IT investment, systems availability remains one of the most important criteria for today's e-businesses when implementing an enterprise solution. Even the most secure or mobile network is of little value if it does not provide on-demand access to all users.

Enterasys Networks has a long history of developing not just highly redundant products, but feature-rich products that take availability to the next level. No one device is 100% reliable for life, so Enterasys has designed solutions that take into account device failure, and allow for the deployment of 100% available networks. Our enterprise solutions offer...

- Switch-level redundancy in our complete line of modular products
- Intelligent meshed backbones in Layer 2 networks to negate switch failure
- Fully resilient Layer 3-4 services across an entire switched backbone
- Intuitive management applications to pinpoint and resolve problems quickly
- Application-level control to prioritize mission-critical information
- Load-sharing solutions to redirect traffic on servers
- Built-in fault tolerance in switching and routing platforms

Products like the X-Pedition, Matrix, Aurorean and NetSight all work together to create an enterprise that prevents delays or outages and ensures 24x7 network availability worldwide.

# SECURITY, AVAILABILITY, MOBILITY



*High-speed, high-density Matrix switches handle the heaviest traffic to keep you on the move.*



*Intuitive NetSight Atlas applications oversee the entire network—and ensure that authorized users always have access!*



*Award-winning, indoor/outdoor RoamAbout wireless solution for the workforce that's always on the go!*



*Cost-effective, high-performance VPN solutions for remote offices, telecommuters and road warriors.*

## Total Mobility

Network mobility is a fast-growing demand for organizations today, regardless of their particular industry. Education, health care, government and private businesses are all looking for more flexibility in their workforce, and that is driving the need for mobility of both users and information.

Wireless technology obviously contributes to more flexible network access, but mobility is more than just the ability to connect to the network from anywhere. It also includes the way the network grants users access to information and applications. Enterasys provides a total mobility solution through hardware and software features such as...

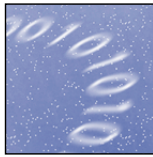
- Policy and directory services for control and flexibility
- Virtual LAN implementations allow complete connection flexibility
- VPN solutions provide secure, high-speed and low-cost solutions for a highly mobile workforce
- Achieve complete mobility with wireless solutions that link “un-tethered” mobile users
- Prioritize and provision all network users with secure, application-aware management solutions
- Ensure connectivity for all network users with a low-cost, high-performance switching solution
- Offer seamless interoperability through standards-based mobility solutions

The mobility of companies is even more enhanced through the User Personalized Network (UPN), a standards-based solution that allows you to assign resources and access privileges to users and departments across the entire enterprise. These rules stay with the end users, regardless of where they log on. The UPN concept links the user, the network and the IT resource together in a way that delivers a unique perspective to the enterprise customer.



## SWITCH ROUTERS

***Secure, wire-speed IP/IPX routing from the backbone to the desktop to the WAN***



Enterasys' high-capacity switch routing solutions deliver reliable, secure connectivity across your entire enterprise. As the industry's best-selling modular Layer 3 switch for two years running,\* the X-Pedition family of switch routers supports all your critical applications with wire-speed performance and pinpoint control. Choose the X-Pedition that best fits your needs. From the corporate backbone to your regional sites, only the X-Pedition can deliver the performance and feature-rich functionality today's mission-critical enterprises demand.

\*Based on latest marketshare figures from Dell'Oro Group

## X-PEDITION ER16

### High-Capacity Backbone Switch Router



#### High-performance, scalable LAN/WAN enterprise switch router

- 128 Gbps non-blocking switching fabric; 70 Mpps routing throughput
- Up to 120 Gigabit Ethernet ports; up to 480 10/100 ports
- Up to 4,000,000 Layer 4 application flows; 250,000 Layer 3 routes; 1,600,000 MAC addresses; 20,000 security/access filters; 4,096 VLANs

#### Pinpoint control to prioritize applications, improve operation

- Wire-speed, application-level QoS for end-to-end reliability
- Application load balancing and content verification ensure that resources are delivered with no delays or latency
- Allocate bandwidth to users on a per-port basis; apply user-specific priorities or use incoming pre-prioritization levels

#### Multilayer security features

- Can be deployed with VPNs, firewalls, intrusion detection systems
- Enable Access Control Lists for filtering traffic without compromising performance

#### Superior fault tolerance to ensure 24x7 network availability

- Provides redundant power, control modules, switch fabrics, ports, line cards

Enterasys' X-Pedition ER16 16-slot chassis-based routing platform represents a new generation of enterprise-wide LAN/WAN backbone solutions, providing the scalability, performance and application control to meet the growing needs of today's infrastructures. The ER16 provides a rich set of application services including transparent web caching and redirection, traffic prioritization and traffic shaping, multilayer security, application load balancing, application content verification and high availability. These services ensure full application delivery—for e-commerce, enterprise resource planning, voice-over-IP, customer relationship management, and more—from the desktop to the WAN.

With up to 128 Gbps of non-blocking switch fabric and over 4 million Layer 4 application traffic flows, the X-Pedition ER16 provides the density needed to support the largest enterprises.

## X-PEDITION ER16

### High-Capacity Backbone Switch Router

#### Specifications

---

##### **Physical**

Dimensions	48.26 cm (19") x 48.26 cm (19") x 88.9 cm (35")
Weight	56.25 kg (125 lbs)

##### **Environmental**

Operating Temperature	5° to +40° C (41° to +104° F)
Non-Operating Temperature	-30° to +73° C (-22° to +164° F)
Operating Humidity	15 to 95% (non-condensing)
Power Consumption	100 to 125 VAC Max or 200 to 250 VAC Max, 2400 W -48 VDC, 2400 W 50 to 60 Hz

#### Ordering Information

---

<b>Part No.</b>	<b>Description</b>
ER16-CS	Enterasys routing platform base chassis with one switch fabric module and a clock card

##### **Modules**

ER16-04	Enterasys Routing Platform 4-port 1000Base-4 GBIC module
ER16-SX-08	Enterasys Routing Platform 8-port 1000Base-SX module
ER16-08	Enterasys Routing Platform 8-port GBIC module
ER16-TX-24	Enterasys Routing Platform 24-port 10/100 Base-TX module
ER16-TX-32	Enterasys Routing Platform 32-port 100Base-TX module
ER16-GTX32-04	Enterasys Routing 4-port 1000Base-TX module
ER16-GTX32-08	Enterasys Routing 8-port 1000Base-TX module
ER16-HFX31-24	Enterasys Routing 24-port 100Base-FX T series module for MMF via MTRJ connectors
ER16-HFX39-24	Enterasys Routing 24-port 100Base-FX T series module for SMF via MTRJ connectors
ER16-SERC-04-AA	Enterasys Routing Platform 4-port Serial w/compression WAN

## X-PEDITION ER16

### *High-Capacity Backbone Switch Router*

ER16-SERCE-04-A	Enterasys Routing Platform 4-port Serial w/compression & Encryption WAN
ER16-HSSI-02-CK	ER16 2-port High-Speed Serial WAN
ER16-FDDI-02	Enterasys Routing 2-port FDDI base module; Accepts Physical Modules for connectivity (FPHY modules sold separately)
ER16-ATM29-02	2-port X-Pedition ER16/ER16 ATM base module; accepts Physical Modules for connectivity
ER16-POS21-04	4-port OC-3c/STM-1 Packet-over-SONET/SDH MMF module
ER16-POS29-04	4-port OC-3c/STM-1 Packet-over-SONET/SDH SMF-IR module
ER16-POS31-02	2-port OC-12c/STM-4 Packet-over-SONET/SDH MMF module
ER16-POS39-02	2-port OC-12c/STM-4 Packet-over-SONET/SDH SMF-IR module
<b>Accessories</b>	
ER16-AC	ERP AC power supply (minimum 2 required, 3 or 4 required for redundancy)
ER16-FN	Enterasys routing platform fan tray assembly (spare)
ER16-CK	Enterasys routing platform clock card assembly (spare)
ER16-SF	Enterasys routing platform switching fabric module (spare or redundancy)
ER16-CM3-128	Enterasys routing platform control module with 128 MB

## X-PEDITION 8600

### High-Capacity Enterprise Switch Router



#### Multilayer switch router for the enterprise backbone

- Wire-speed IP/IPX routing for unicast and multicast traffic
- 32 Gbps non-blocking switching fabric; 30 Mpps routing throughput
- Up to 30 Gigabit Ethernet ports; up to 120 10/100 ports
- Built-in support for 10 Gig, optical networks and emerging technologies

#### Full application support from the desktop to the WAN

- Wire-speed Layer 4 application flow switching
- Maintains wire-speed performance with all other features enabled
- Supports HSSI, FDDI, ATM and serial WAN interfaces
- Ready now for multicast voice and video applications

#### Pinpoint control to prioritize applications, improve e-business operation

- Wire-speed, application-level QoS for end-to-end reliability
- Application load balancing and content verification
- Supports Weighted Fair Queuing and Rate Limiting (CAR)

#### Advanced security features for greater peace of mind

- Secure Harbour architecture protects against internal and external abuse
- Wire-speed Layer 2-3-4 security filters

Built for the enterprise backbone, the chassis-based, high-capacity 16-slot X-Pedition switch router combines wire-speed performance at gigabit rates, pinpoint control of application flows, and superior routing capacity to ensure high availability of internal and external networks.

The X-Pedition 8600 delivers full-function, wire-speed IP/IPX routing—both unicast and multicast. Powered by a non-blocking 32 Gbps switching fabric, the X-Pedition 8600's throughput exceeds 30 Mpps. It can be configured with up to 120 10/100 ports or 30 Gigabit Ethernet ports.

Enterprise backbone requirements are met through massive table capacity and redundancy. The X-Pedition switch router is also the industry's first Gigabit switching router with WAN capabilities. The WAN interfaces extend the benefits of the X-Pedition to remote locations. In so doing, they enable application-level control from the desktop to the WAN edge, all at wire speed.



## X-PEDITION 8600

### High-Capacity Enterprise Switch Router

#### Specifications

---

##### Physical

Dimensions	48.9 cm (19.25") x 43.82 cm (17.25") x 31.12 cm (12.25")
Weight	28 kg (61.75 lbs)

##### Environmental

Operating Temperature	0° C to 40° C (32° F to 104° F)
Relative Humidity	5% to 95% non-condensing

#### Ordering Information

---

<b>Part No.</b>	<b>Description</b>
SSR-16	X-Pedition switch router 16-slot base system including chassis, backplane, modular fan, and a single switch fabric module (SSR-SF-16). Requires CM2 Control Module
SSR-PS-16	Power supply for the X-Pedition switch router
SSR-PS-16-DC	DC power supply for the X-Pedition 8600
SSR-SF-16	Switch fabric module for the X-Pedition 8600. One module ships with the base system (SSR-16). Order only if second is required for redundancy
SSR-MEM-128	CM2 memory upgrade kit (For CM2 series only)
SSR-PCMCIA	SSR-16 and SSR-8 8MB PCMCIA card (ships with ER-RS-ENT, second required for redundant CM configuration)
SSR-CM4-256	X-Pedition CM4 control module with 256 MB memory
SSR-CM3-128	X-Pedition CM3 control module with 128 MB memory
SSR-CM2-64	X-Pedition control module with 64 MB memory
SSR-RS-ENT	X-Pedition Router Services for L2, L3, L4 switching and IP (RipV2, OSPF) IPX (RIP/SAP) routing. Includes CoreWatch. One required with every chassis, shipped on PC card

#### Modules

For a complete list of modules for the X-Pedition 8600, see page 15.

## X-PEDITION 8000

### Enterprise Switch Router



#### **Multilayer switch router for the corporate backbone or wiring closet**

- Full-function IP/IPX routing for unicast and multicast traffic
- 16 Gbps non-blocking switching fabric; 15 Mpps routing throughput
- Up to 14 Gigabit Ethernet ports; up to 56 10/100 ports

#### **Full application support from the desktop to the WAN**

- Wire-speed Layer 4 application flow switching
- Maintains wire-speed performance with all other features enabled
- Supports HSSI, FDDI, ATM and serial WAN interfaces
- Ready now for multicast voice and video applications

#### **Pinpoint control to prioritize applications, improve e-business operation**

- Wire-speed, application-level QoS for end-to-end reliability
- Application load balancing and content verification
- Supports Weighted Fair Queuing and Rate Limiting (CAR)

#### **Advanced security features for greater peace of mind**

- Secure Harbour architecture protects against internal and external abuse
- Wire-speed Layer 2-3-4 security filters

Designed to fit in a small corporate backbone or the wiring closet as part of a larger enterprise, the 8-slot X-Pedition 8000 combines wire-speed performance at Gigabit rates, pinpoint control of application flows, and superior routing capacity to ensure high availability of internal and external networks.

The X-Pedition 8000 delivers full-function, wire-speed IP/IPX routing—both unicast and multicast. Powered by a non-blocking 16 Gbps switching fabric, the X-Pedition 8000's throughput exceeds 15 Mpps. It can be configured with up to 56 10/100 ports or 14 Gigabit Ethernet ports.

Enterprise requirements are met through massive table capacity and redundancy. The X-Pedition switch router is also the industry's first Gigabit switching router with WAN capabilities. The WAN interfaces extend the benefits of the X-Pedition router to remote locations, providing network administrators application-level control from the desktop to the WAN edge, all at wire speed.

# X-PEDITION 8000

## Enterprise Switch Router

### Specifications

---

#### Physical

Dimensions	22.3 cm (8.75") x 43.82 cm (17.25") x 31.12 cm (12.25")
Weight	18.2 kg (40 lbs)

#### Environmental

Operating Temperature	0° C to 40° C (32° F to 104° F)
Relative Humidity	5% to 95% (non-condensing)

### Ordering Information

---

<b>Part No.</b>	<b>Description</b>
SSR-8	X-Pedition switch router 8-slot base system including chassis, backplane, modular fan, and a single switch fabric module (SSR-SF-16). Requires new CM2 Control Module
SSR-PS-8	Power supply for the X-Pedition switch router
SSR-PS-8-DC	DC power supply for the X-Pedition 8000
SSR-MEM-128	CM2 memory upgrade kit
SSR-PCMCIA	SSR-16 and SSR-8 8MB PCMCIA card (ships with ER-RS-ENT, second required for redundant CM configuration)
SSR-CM4-256	X-Pedition CM4 control module with 256 MB memory
SSR-CM3-128	X-Pedition CM3 control module with 128 MB memory
SSR-CM2-64	X-Pedition control module with 64 MB memory
SSR-RS-ENT	X-Pedition Router Services for L2, L3, L4 switching and IP (Ripv2, OSPF) IPX (RIP/SAP) routing. Includes built-in management. One required with every chassis, shipped on PC card

### Modules

For a complete list of modules for the X-Pedition 8000, see page 16.



## MODULES FOR THE 8600 AND 8000

### *X-Pedition 8600 Modules*

#### **SSR-ARE**

AppleTalk routing module for the X-Pedition 8000/8600

#### **SSR-ATM29-02**

ATM switch routing module for the X-Pedition 8000/8600

#### **SSR-GTX32-02**

1000Base-T Gigabit switch routing module for the X-Pedition 8000/8600, with 2 ports

#### **SSR-GSX21-02-AA**

1000Base-SX Gigabit module for the X-Pedition switch router, with 2 SCSX ports (for MMF only) and 16 MB of memory (supporting up to 2,000,000 flows per SSR system)

#### **SSR-GSX31-02**

1000Base-SX Jumbo Frame module for the X-Pedition 8000/8600, with 2 ports via SC connector and 16 MB memory

#### **SSR-GLX29-02-AA**

1000Base-LX Gigabit module for the X-Pedition switch router, with 2 SCLX ports (for MMF or SMF) and 16 MB of memory (supporting up to 2,000,000 flows per system)

#### **SSR-GLX39-02**

1000Base-LX Gigabit Jumbo Frame module for the X-Pedition 8000/8600, with 2 ports via SC connector and 16 MB memory

#### **SSR-GLH39-02**

1000Base-LLX (Long Haul) Gigabit Jumbo Frame module X-Pedition 8000/8600, with 2-ports via SC connector and 16 MB memory (70KM)

#### **SSR-HTX12-08-AA**

10/100Base-TX switch routing module for the X-Pedition 8000/8600, with 8 Cat 5 RJ45

ports, and 4 MB of memory (supporting up to 500,000 flows per system)

#### **SSR-HTX22-08-AA**

10/100Base-TX switch routing module for the X-Pedition 8000/8600, with 8 Cat 5 RJ45 ports, and 16 MB of memory (supporting up to 2,000,000 flows per system)

#### **SSR-HTX32-16**

10/100Base-TX switch routing module for the X-Pedition 8000/8600, with 16 ports

#### **SSR-HFX21-08-AA**

100Base-FX module for the X-Pedition 8000/8600, with 8 MMF SC ports, and 16 MB of memory (supporting up to 2,000,000 flows per system)

#### **SSR-HFX29-08-AA**

100Base-FX switch routing module for the X-Pedition 8000/8600, with 8 ports via SMF and 16 MB memory (supporting up to 2,000,000 flows per system). Build to order

#### **SSR-FDDI-02**

FDDI switch routing module for the X-Pedition 8000/8600, 2 ports (DAS/SAS FPHYs purchased separately)

#### **SSR-HSSI-02-AA**

HSSI switch routing module for the X-Pedition 8000/8600, dual ports

#### **SSR-SERC-04-AA**

Quad-port Serial module with compression for the X-Pedition 8000/8600

#### **SSR-SERCE-04-AA**

Quad-port Serial module with compression and encryption for the X-Pedition 8000/8600

## MODULES FOR THE 8600 AND 8000

### *X-Pedition 8000 Modules*

#### **SSR-ARE**

AppleTalk routing module for the X-Pedition 8000/8600 switch router

#### **SSR-ATM29-02**

ATM switch routing module for the X-Pedition 8000/8600

#### **SSR-GTX32-02**

1000Base-T Gigabit switch routing module for the X-Pedition 8000/8600, with 2 ports

#### **SSR-GSX21-02-AA**

1000Base-SX Gigabit module for the X-Pedition switch router, with 2 SCSX ports (for MMF only) and 16 MB of memory (supporting up to 2,000,000 flows per SSR system)

#### **SSR-GSX31-02**

1000Base-SX Jumbo Frame module for the X-Pedition 8000/8600, with 2 ports via SC connector and 16 MB memory

#### **SSR-GLX29-02-AA**

1000Base-LX Gigabit module for the X-Pedition switch router, with 2 SCLX ports (for MMF or SMF) and 16 MB of memory (supporting up to 2,000,000 flows per system)

#### **SSR-GLX39-02**

1000Base-LX Gigabit Jumbo Frame module for the X-Pedition 8000/8600, with 2 ports via SC connector and 16 MB memory

#### **SSR-GLH39-02**

1000Base-LLX (Long Haul) Gigabit Jumbo Frame module X-Pedition 8000/8600, with 2-ports via SC connector and 16 MB memory (70KM)

#### **SSR-HTX12-08-AA**

10/100Base-TX switch routing module for the X-Pedition 8000/8600, with 8 Cat 5 RJ45 ports,

and 4 MB of memory (supporting up to 500,000 flows per system)

#### **SSR-HTX22-08-AA**

10/100Base-TX switch routing module for the X-Pedition 8000/8600, with 8 Cat 5 RJ45 ports, and 16 MB of memory (supporting up to 2,000,000 flows per system)

#### **SSR-HTX32-16**

10/100Base-TX switch routing module for the X-Pedition 8000/8600, with 16 ports

#### **SSR-HFX21-08-AA**

100Base-FX module for the X-Pedition 8000/8600, with 8 MMF SC ports, and 16 MB of memory (supporting up to 2,000,000 flows per system)

#### **SSR-HFX29-08-AA**

100Base-FX switch routing module for the X-Pedition 8000/8600, with 8 ports via SMF and 16 MB memory (supporting up to 2,000,000 flows per system). Build to order

#### **SSR-FDDI-02**

FDDI switch routing module for the X-Pedition 8000/8600, 2 ports (DAS/SAS FPHYs purchased separately)

#### **SSR-HSSI-02-AA**

HSSI switch routing module for the X-Pedition 8000/8600, dual ports

#### **SSR-SERC-04-AA**

Quad-port Serial module with compression for the X-Pedition 8000/8600

#### **SSR-SERCE-04-AA**

Quad-port Serial module with compression and encryption for the X-Pedition 8000/8600

## X-PEDITION 2400

### Workgroup Switch Router



#### Application-aware desktop enterprise switch router

- Standards-based Layer 2, 3, 4 switching; wire-speed, standards-based IP/IPX routing
- 8 Gbps non-blocking switching fabric; 6 Mpps routing throughput
- 180,000 Layer 2 MAC addresses; 220,000 Layer 3 routes; 180,000 Layer 4 application flows; 4,096 VLANs
- Provides 256 MB system memory for enterprise scalability
- Flexible expansion for 100Base-FX, 1000Base-SX/LX/LH, WAN and ATM

#### Full application support right to the desktop

- Wire-speed Layer 4 application flow switching
- Maintains wire-speed performance with all other features enabled

#### Pinpoint control to prioritize applications

- Wire-speed, application-level QoS for end-to-end reliability
- Application load balancing and content verification
- Allocate bandwidth on a per-port basis down to 1 kbps rate
- Supports Strict Priority or Weighted Fair Queuing and Rate Limiting (CAR)

#### Advanced security features for greater peace of mind

- Up to 20,000 Layer 2, 3, 4 wire-speed security/access control filters
- Access Control Lists applied at Layer 2, 3 or 4 without affecting performance

#### Superior fault tolerance to ensure 24 x 7 network availability

- \* Redundant power supplies, ports and line cards to protect from failures
- \* Supports Spanning Tree, Per-VLAN Spanning Tree, rapid reconvergence of Spanning Tree, load sharing, link aggregation, policy-based and multi-path routing
- \* Supports VRRP in a redundant environment for compatibility with other systems

#### Standards-based, intuitive management for fast, easy troubleshooting

- Full SNMP management via NetSight Atlas
- Full support for RMON and RMON 2 for granularity in flow statistics

## X-PEDITION 2400

### Workgroup Switch Router

Designed to accommodate multiple enterprise networking functions—including LAN backbone, server load balancing, and workgroup or remote site connectivity—the X-Pedition 2400-256 supports 16 fixed 10/100 ports and flexible expansion slots to accommodate 100Base-FX, 1000Base-SX/LX/LH, WAN or ATM for high-density, wire-speed 10/100/1000 Mbps switching and routing with throughput in excess of 6 Mpps.

The X-Pedition 2400-256 also offers an expanded system memory capacity of 256 MB to support more than 200,000 routes, as well as system configurations including Access Control Lists, Quality of Service and multicasting tables. This larger memory capacity allows the X-Pedition 2400-256 to provide the functionality enterprise customers require, both today and in the future.

#### Specifications

---

##### Physical

Dimensions	7.1 cm (2.8") H x 43.2 cm (17") W x 47 cm (18.5") D
Weight	9.07 kg (20 lbs)

##### Environmental

Operating Temperature	+5° C to +40° C (41° F to 104° F)
Operating Humidity	15% to 90% (non-condensing)

#### Ordering Info

---

Part No.	Description
XP-2400-256	X-Pedition 2400 switch router with 16 slots for 10/100 connectivity and a flexible expansion slot. Includes 256 MB of memory
XP-2-ATM29-02	XP-2400 2 ATM OC3
XP-2-SX-AA	X-Pedition 2400 2-port 1000BaseSX expansion module
XP-2-LX-AA	X-Pedition 2400 2-port 1000BaseLX module
XP-2-LX70-AA	X-Pedition 2400 1-port 70km 1000BaseLX Gigabit Ethernet module
XP-2-TX-AA	X-Pedition 2400 8-port 10/100 TX module
XP-2-FX-AA	X-Pedition 2400 8-port 100 FX module w/ MT-RJ connectors



## **X-PEDITION 2400**

### *Workgroup Switch Router*

XP-2-SER-AA	X-Pedition 2400 dual-port Serial module
XP-2-SERC-AA	X-Pedition 2400 quad-port Serial module with compression
XP-2-SERCE-AA	X-Pedition 2400 quad-port Serial module with compression & encryption
XP-2-HSSI-CK	HSSI blade for XP-2400 with internal clocking support
XP-2-RKMT	Rackmount Kit for XP-2400 & XP2100



## **X-PEDITION 2100**

### ***Application-Aware Workgroup Switch Router***



#### **Multilayer solution for workgroup and server farm environments**

- Full-function IP/IPX routing for unicast and multicast traffic
- 8 Gbps non-blocking switching fabric; 9.2 Mpps routing throughput
- 8 1000Base-SX ports operable in full-duplex or half-duplex mode

#### **Full application support right to the desktop**

- Wire-speed Layer 4 application flow switching
- Maintains wire-speed performance with all other features enabled
- Ready now for multicast voice and video applications

#### **Pinpoint control to prioritize applications, improve e-business operation**

- Wire-speed, application-level QoS for end-to-end reliability
- Application load balancing and content verification
- Supports DiffServ, Weighted Fair Queuing and Rate Limiting (CAR)

#### **Advanced security features for greater peace of mind**

- Secure Harbour framework protects against internal and external abuse
- Wire-speed Layer 2-3-4 security filters
- Supports LFAP interface to precisely monitor and measure network usage

Providing an important link from the backbone to the workgroup, the X-Pedition 2100 combines wire-speed routing at gigabit rates with pinpoint control of application flows to ensure high availability right from the desktop. With the 2100's Layer 4 switching capacity, application-level control seamlessly extends to the workgroup, while QoS and load balancing expands to the server farm. In fact, with its 8.0 Gbps non-blocking switching fabric and 9.2 Mpps routing throughput, the 2100 offers one hundred times the performance of traditional routers at a cost comparable to Layer 2 switches.

Full-function IP/IPX routing enables the 2100 to satisfy even the most traffic-intensive environments. More than 4,000 VLANs, 2,000 security filters and large per-port buffers provide the capacity to handle peak traffic.

The 2100 can also be positioned as a Layer 2, 3 and 4 server load-balancing switch. Up to eight servers can be connected via 1000Base-SX connections, extending application control.

## X-PEDITION 2100

### Application-Aware Workgroup Switch Router

#### Specifications

---

##### *Physical*

Dimensions 7.1 cm (2.8") H x 43.2 cm (17") W x 47 cm (18.5") D

Weight 9 kg (22 lb)

##### *Environmental*

Operating Temperature 5°C to 40°C (41° F to 104 ° F)

Relative Humidity 15% to 90% (non-condensing)

#### Ordering Information

---

##### *Part No.*

SSR-2-GSX

##### *Description*

X-Pedition 2100 workgroup switch router in a fixed configuration with 8 ports 1000 Base-SX. Includes redundant power supplies, X-Pedition Router Services software and device management software.



## X-PEDITION 2000

### *Application-Aware Desktop Switch Router*



#### **Multilayer solution for workgroup and server farm environments**

- Full-function IP/IPX routing for unicast and multicast traffic
- 8 Gbps non-blocking switching fabric; 6 Mpps routing throughput
- Up to 16 10/100/1000 ports operable in full-duplex or half-duplex mode

#### **Full application support right to the desktop**

- Wire-speed Layer 4 application flow switching
- Maintains wire-speed performance with all other features enabled
- Ready now for multicast voice and video applications

#### **Pinpoint control to prioritize applications, improve e-business operation**

- Wire-speed, application-level QoS for end-to-end reliability
- Application load balancing and content verification
- Supports Weighted Fair Queuing and Rate Limiting (CAR)

#### **Superior fault tolerance to ensure 24x7 network availability**

- Redundant power supplies and CPUs to protect from failures
- Load sharing to enhance performance through redundant links

#### **Advanced security features for greater peace of mind**

- Secure Harbour framework protects against internal and external abuse
- Wire-speed Layer 2-3-4 security filters

Providing a key link from the backbone to the desktop, the X-Pedition 2000 switch router is the premier application-aware desktop enterprise switch targeted at workgroups. Designed for the workgroup, the X-Pedition 2000 provides high-density, wire speed 10/100/1000 Mbps switching and routing with throughput in excess of 6 Mpps. The X-Pedition 2000 extends full Layer 2, 3 and 4 switching functionality to the desktop.

In addition to performance, the X-Pedition 2000 provides pinpoint application control and superior routing capacity. The X-Pedition 2000 is standards-based and provides seamless interoperability with previous generations of networking equipment. Finally, the X-Pedition 2000 features full Layer 2 switching, full-function routing, and Layer 4 application switching. Layer 4 application switching provides pinpoint control of network traffic through extensive security, port-level accounting and comprehensive quality of service (QoS)—all at the application level, and all without sacrificing wire-speed performance.



## X-PEDITION 2000

### Application-Aware Desktop Switch Router

#### Specifications

---

##### **Physical**

Dimensions	7.1cm (2.8") H x 43.2cm (17") W x 47cm (18.5") D
Weight	9 kg (20 lb)

##### **Environmental**

Operating Temperature	5° C to 40° C (41° F to 104° F)
Relative Humidity	15% to 90% (non-condensing)

#### Ordering Information

---

<b>Part No.</b>	<b>Description</b>
SSR-2-B128	X-Pedition 2000 desktop switch router in a fixed configuration with 16 10/100 TX ports. Includes redundant power supplies, X-Pedition Router Services software and CoreWatch device management software
SSR-2-PKG128	10/100Base-TX module for the X-Pedition 2000 with 24 10/100 ports and a 2-port 1000Base-SX expansion module
SSR-2-LX-AA	1000Base-LX expansion module for the X-Pedition 2000, 2 ports
SSR-2-SX-AA	1000Base-SX expansion module for the X-Pedition 2000, 2 ports
SSR-2-FX-AA	100Base-FX expansion module for the X-Pedition 2000, 8 ports with MT-RJ connectors
SSR-2-TX-AA	10/100Base-TX expansion module for the X-Pedition 2000, 8 ports

## X-PEDITION 1805

### Security Router for Branch Offices



#### Full suite of security technologies

- Extranet, site-to-site and remote access VPN technologies—including IPSec/IKE, Windows XP/2000 client compatible L2TP/IPSec, Extensible Authentication Protocol, and AES encryption—to leverage the Internet for secure and ubiquitous access
- Policy-managed firewalling—including FTP, HTTP, Telnet and rlogin protocol authentication, Denial of Service protection, ActiveX/Java filtering, and VoIP/e-mail application support
- Comprehensive IP routing, QoS features and a wide range of WAN interfaces for non-stop local and wide area networking

#### Powerful, intuitive management for extensive monitoring, remote configuration and reduced training costs

- Industry-standard Command Line Interface, web-based remote configuration, SNMP integration and Enterasys' NetSight Atlas management tools
- Front-panel LED status indicators, out-of-band management interface and recessed restore factory default switch provide easy on-site diagnostics

#### High-performance security and routing platform for the enterprise branch office or small/medium business

- 37 Kpps IP router throughput; 120 Mbps VPN throughput, and dedicated VPN hardware acceleration included with each XSR security router
- Enterasys Routing Services feature set, including IP, RIPv1, RIPv2 and OSPF protocols, DHCP Relay, DHCP server, ISDN, Frame Relay, dial on demand, dial backup and bandwidth on demand
- Easy-to-add software and hardware enhancements
- Standards-based network interface modules support a wide range of WAN interfaces and are compatible with other X-Pedition switch routers

Ideally suited for the enterprise branch office or central site of a small or medium business, the X-Pedition Security Router 1805 (XSR-1805) offers a complete networking and security solution in a single box. Created to meet the connectivity, security, accessibility and upgradeability requirements of today's distributed networked enterprise, the XSR-1805 is a desktop-mounted IP router with complete virtual private network functionality, advanced firewall technology, two 10/100 Ethernet LAN interfaces, IPSec VPN hardware acceleration and a wide selection of WAN interfaces, including Fractional T1/E1 with CSU/DSU, Channelized T1/E1 with CSU/DSU, synch/asynch serial, ISDN BRI (U and S/T interface) and ISDN PRI.

## X-PEDITION 1805

### Security Router for Branch Offices

#### Specifications

---

##### **Physical**

Dimensions	35.6 cm (14") L x 25.4 cm (10") W x 6.4 cm (2.5") H
Weight	3.18 kg (7 lb)

##### **Environmental**

Operating Temperature	0° C to +40° C (+32° F to +104° F)
Non-Operating Temperature	-40° C to +70° C (-40° F to 158° F)
Operating Humidity	5% to 90% (non-condensing)

#### Ordering Information

---

<b>Part No.</b>	<b>Description</b>
XSR-1805	X-Pedition Security Router 1805 base system, 32MB, ETHOS IP Routing Services
XSR-64MB-MEM	64 MB Memory Upgrade for XSR-1805
XSR-18xx-VPN	VPN feature set for XSR-1800 Series Security Routers
XSR-1805-RKMT	Rack Mount Kit for XSR-1805 Security Router

##### **Network Interface Modules**

NIM-CT1/E1-01	1-Port Channelized T1/E1 DSU/CSU NIM
NIM-CT1/E1-02	2-Port Channelized T1/E1 DSU/CSU NIM
NIM-CT1/E1-04	4-Port Channelized T1/E1 DSU/CSU NIM
NIM-T1/E1-01	1-Port Fractional T1/E1 DSU/CSU NIM
NIM-T1/E1-02	2-Port Fractional T1/E1 DSU/CSU NIM
NIM-T1/E1-04	4-Port Fractional T1/E1 DSU/CSU NIM
NIM-SER-02	2-Port Synch/Asynch serial NIM
NIM-SER-04	4-Port Synch/Asynch serial NIM
NIM-BRI-ST-01	1 Port ISDN BRI S/T NIM
NIM-BRI-ST-02	2 Port ISDN BRI S/T NIM

##### **Cables**

NIM-V35-CAB-04	4-Port V.35 DTE Cable for use with all XSR serial NIMs, 6' (1.83 m)
NIM-232-CAB-04	4-Port EIA-232/530 DTE Cable for use with all XSR serial NIMs, 6' (1.83 m)
NIM-X21-CAB-04	4-Port X.21 DTE Cable for use with all XSR serial NIMs, 6' (1.83 m)
NIM-449-CAB-04	4-Port EIA-449 DTE Cable for use with all XSR serial NIMs, 6' (1.83 m)
NIM-DBU1-CAB-04	Combination Cable—2-Port V.35 and 2-Port EIA-232 DTE Cable for use with 2- and 4-Port NIM-SER-Ox serial NIM

## X-PEDITION 1850

### Security Router for Branch Offices



#### Full suite of security technologies

- Extranet, site-to-site and remote access VPN technologies—including IPSec/IKE, Windows XP/2000 client compatible L2TP/IPSec, Extensible Authentication Protocol, and AES encryption—to leverage the Internet for secure and ubiquitous access
- Policy-managed firewalling—including FTP, HTTP, Telnet and rlogin protocol authentication, Denial of Service protection, ActiveX/Java filtering, and VoIP/e-mail application support
- Comprehensive IP routing, QoS features and a wide range of WAN interfaces for non-stop local and wide area networking

#### Powerful, intuitive management for extensive monitoring, remote configuration and reduced training costs

- Industry-standard Command Line Interface, web-based remote configuration, SNMP integration and Enterasys' NetSight Atlas management tools
- Front-panel LED status indicators, out-of-band management interface and recessed restore factory default switch provide easy on-site diagnostics

#### High-performance security and routing platform for the enterprise branch office or small/medium business

- 45 Kpps IP router throughput; 120 Mbps VPN throughput, and dedicated VPN hardware acceleration
- Enterasys Routing Services feature set, including IP, RIPv1, RIPv2 and OSPF protocols, DHCP Relay, DHCP server, ISDN, Frame Relay, dial on demand, dial backup and bandwidth on demand
- Easy-to-add software and hardware enhancements
- Standards-based network interface modules support a wide range of WAN interfaces and are compatible with other X-Pedition switch routers

Ideally suited for the enterprise branch office or central site of a small or medium business, the X-Pedition Security Router 1850 (XSR-1850) offers a complete networking and security solution in a single box. Created to meet the connectivity, security, accessibility and upgradeability requirements of today's distributed networked enterprise, the XSR-1850 is a rack-mounted IP router with complete virtual private network functionality, advanced firewall technology, two 10/100 Ethernet LAN interfaces, IPSec VPN hardware acceleration and a wide selection of WAN interfaces, including Fractional T1/E1 with CSU/DSU, Channelized T1/E1 with CSU/DSU, synch/asynch serial, ISDN BRI (U and S/T interface) and ISDN PRI. An optional redundant power supply will also be available.

## X-PEDITION 1850

### Security Router for Branch Offices

#### Specifications

---

##### Physical

Dimensions	25.4 cm (10") L x 43.1 cm (17") W x 5.0 cm (2") H
Weight	4.08 kg (9 lb)

##### Environmental

Operating Temperature	0° C to +40° C (+32° F to +104° F)
Non-Operating Temperature	-40° C to +70° C (-40° F to 158° F)
Operating Humidity	5% to 90% (non-condensing)

#### Ordering Information

---

<b>Part No.</b>	<b>Description</b>
XSR-1850	X-Pedition Security Router 1850 base system, 64 MB, ETHOS IP Routing Services
XSR-128 MB-MEM	128 MB Memory Upgrade for XSR-1850
XSR-1850-VPN	XSR-1850 and VPN feature set bundle
NIM-CT1/E1-01	1-Port Channelized T1/E1 DSU/CSU NIM

##### Network Interface Modules

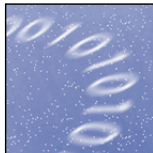
NIM-CT1/E1-02	2-Port Channelized T1/E1 DSU/CSU NIM
NIM-CT1/E1-04	4-Port Channelized T1/E1 DSU/CSU NIM
NIM-T1/E1-01	1-Port Fractional T1/E1 DSU/CSU NIM
NIM-T1/E1-02	2-Port Fractional T1/E1 DSU/CSU NIM
NIM-T1/E1-04	4-Port Fractional T1/E1 DSU/CSU NIM
NIM-SER-02	2-Port Synch/Asynch serial NIM
NIM-SER-04	4-Port Synch/Asynch serial NIM
NIM-BRI-ST-01	1-Port ISDN BRI S/T NIM
NIM-BRI-ST-02	2-Port ISDN BRI S/T NIM

##### Cables

NIM-V35-CAB-04	4-Port V.35 DTE Cable for use with all XSR serial NIMs, 6' (1.83 m)
NIM-232-CAB-04	4-Port EIA-232/530 DTE Cable for use with all XSR serial NIMs, 6' (1.83 m)
NIM-X21-CAB-04	4-Port X.21 DTE Cable for use with all XSR serial NIMs, 6' (1.83 m)
NIM-449-CAB-04	4-Port EIA-449 DTE Cable for use with all XSR serial NIMs, 6' (1.83 m)
NIM-DBUI-CAB-04	Combination Cable—2-Port V.35 and 2-Port EIA-232 DTE Cable for use with 2- and 4-Port NIM-SER-Ox serial NIM

## MULTILAYER SWITCHES

*The building blocks for your next-generation IT infrastructure*



Our scalable, intelligent Matrix family of multilayer switches enables everything from e-commerce and ERP to industry-specific applications such as telemedicine, distance learning, and secured financial transactions. With the features you're looking for, such as guaranteed QoS and built-in redundancy, the Matrix ensures maximum network availability and reliability. Intuitive management tools let you configure the Matrix based on the changing needs of the organization—quickly and securely.

## MATRIX E7

### *Intelligent Access Platform for Data Centers and High-Performance Wiring Closets*



**Supports  
Enterasys' User  
Personalized  
Network!**

#### **High-density, scalable switching**

- Supports 336 10/100 ports, scalable to over 500
- 42 Gigabit ports, scalable to over 80
- Future-ready to support 10-Gigabit Ethernet, DWDM, Jumbo Frames

#### **Comprehensive application control and security features**

- Guarantee delivery of applications like Voice-over-IP and multicast video
- Advanced security filtering based on Layer 2-4 information
- Per-port bandwidth provisioning and queue management
- Supports policy-based management—filtering, rate limiting, priority, and classification at the network edge

#### **Low cost of ownership**

- Built-in traffic control without the expense of external routers
- Next-generation nTERA™ backplane allows complete compatibility with existing Matrix E6 modules and scales up to 420 Gigabits per second

#### **High-availability features**

- Link Aggregation (IEEE 802.3ad), Per-VLAN Spanning Tree (IEEE 802.1s), and Quick Convergence Spanning Tree (IEEE 802.1w)
- Distributed switching architecture offers no single point of failure

Part of Enterasys Networks' award-winning line of enterprise switching solutions, the Matrix E7 is a seven-slot solution that provides the increased speed and functionality required in high-performance wiring closets or data centers. This high-powered performance is available thanks to the Matrix E7's 42-Gigabit backplane. The traffic control capabilities inherent in the Matrix E7 allow users to better control business-critical applications such as Voice-over-IP and multicast video—making it truly an Intelligent Access Platform.

Through the use of embedded directory-enabled services and system management tools, Enterasys delivers ease of use as well as total network visibility. And, Matrix E7 provides the intelligent tools that allow administrators to align the network closer to the goals of the overall organization.

Designed for maximum investment protection, the Matrix E7 supports emerging technologies such as 10 Gigabit Ethernet, Dense Wave Division Multiplexing (DWDM) optical uplinks and Jumbo Frame Support.

## MATRIX E7

### Intelligent Access Platform for Data Centers and High-Performance Wiring Closets

#### Specifications

---

##### Physical

Chassis Dimensions 77.47 cm (30.5") H x 44.04 cm (17.34") W x 36.83 cm (14.5") D

Power Supply Dimensions 12.7 cm (5") H x 21 cm (8.27") W x 27.94 cm (11") D

Module Dimensions 46.4 cm (18.28") H x 6.5 cm (2.38") W x 29.5 cm (11.62") D

##### Weight

Empty Chassis with Fan Tray 23.6 kg (52 lbs)

Power Supply 9.1 kg (20 lbs)

Average Module 2.0 kg (4.5 lbs)

##### Environmental

Operating Temperature 5° C to +40° C (41° F to 104° F)

Non-Operating Temperature 0° C to +70° C (32° F to 158° F)

Operating Humidity 5% to 90% (non-condensing)

#### Ordering Information

---

<b>Part No.</b>	<b>Description</b>
6C107	Matrix E7 chassis, 7 slots, with fan tray
6C207-1	Matrix E7 power supply, 1200-watt (order two for redundancy)
6C407	Matrix E7 fan tray, spare

#### Matrix Modules

For a complete list of modules for the Matrix E7, see page 36.



## MATRIX E6

### High-Density Switching Platform for the Wiring Closet



Supports  
Enterasys' User  
Personalized  
Network!

#### High-density, scalable switching

- Optimized for 10/100 Mbps switching with high-speed Gigabit Ethernet, Fast Ethernet, FDDI, ATM, or WAN backbone connectivity
- Delivers up to 30 Gigabit Ethernet ports; 120 switched Fast Ethernet ports; 240 switched Ethernet ports

#### Enhanced application control and security features

- Guarantee delivery of applications like Voice-over-IP and multicast video
- Advanced security filtering based on Layer 2-4 information
- Per-port bandwidth provisioning and queue management
- Supports policy-based management—filtering, rate limiting, priority, and classification at the network edge

#### Superior fault tolerance for maximum availability

- Distributed switching architecture for maximum uptime; no single point of failure

#### Standards-based for complete interoperability

- Conforms to IEEE 802.3 Ethernet and Fast Ethernet standards as well as 802.3z Gigabit Ethernet, 802.1q VLAN, 802.1p Class of Service and 802.3x Flow Control standards

#### High-availability features

- Distributed switching architecture offers no single point of failure

Delivering the same features found in other Enterasys multilayer switches, the Matrix E6 wiring closet solution offers broadcast storm protection, port mirroring, port trunking, embedded RMON, and advanced VLAN and QoS functionality. A modular, five-slot chassis-based switching platform, the Matrix E6 has been designed to accommodate a wide range of port densities with modules that can provide up to 2,000,000 packets per second of throughput each.

The flexible Matrix E6 can be configured as a Layer 2 switch or, with the optional Advanced Router Module installed, the E6 can provide wire-speed Layer 3-4 switching and routing to support more business-critical applications.

Additionally, as companies migrate from traditional data networks to integrated voice, video and data environments, the Matrix E6 will be able to cost-effectively accommodate these converging requirements from a single platform. With its distributed, high-speed architecture, the Matrix E6 provides the industry's best-performing and uniquely affordable solution.

## MATRIX E6

### High-Density Switching Platform for the Wiring Closet

#### Specifications

---

##### **Physical**

##### Dimensions

6C105	62.2 cm (24.5") H x 44 cm (17.3") W x 35.6 cm (14") D
6C205-2/3	42.17 cm (17.57") H x 5.71 cm (2.38") W x 30.96 cm (12.9") D
6C405	6.21 cm (2.59") H x 41.23 cm (17.18") W x 32.9 cm (13.71") D

##### Weight

6C105	12.5 kg (25 lbs)
6C205-2	17.82 kg (8.1 lbs)
6C205-3	17.82 kg (8.1 lbs)
6C405	7.7 kg (3.5 lbs)

##### **Environmental**

Operating Temperature +5° C to +40° C (41° F to 104° F)

##### Non-Operating

Temperature -30° C to +73° C (-22° F to 164° F)

Operating Humidity 15% to 90% (non-condensing)

#### Ordering Information

---

<b>Part No.</b>	<b>Description</b>
6C105	Matrix E6 5-slot chassis with modular fan tray and two slots for power supplies (power supplies not included, fan tray ships with chassis)
6C205-2	510 Watt DC (36 to 72 Volts) power supply for the Matrix E6 (6C105)
6C205-3	510 Watt AC (100 to 250 Volts) power supply for the Matrix E6 (6C105)
6C405	Fan tray for the Matrix E6 (ships with the chassis, purchase only if spare is needed)

#### Matrix Modules

For a complete list of modules for the Matrix E6, see page 36.

## MATRIX E5

### *High-Speed, Low-Cost Wiring Closet Switch*



**Supports  
Enterasys' User  
Personalized  
Network!**

#### **High-density solution to keep up with growing environments**

- Up to 240 10/100 Mbps ports; up to 30 Gigabit Ethernet ports
- Modular uplinks to high-speed servers and backbones

#### **Performance and scalability to support bandwidth-intensive applications**

- 30 Gbps switching bandwidth; > 44 Mpps throughput
- Convergence-ready, able to support emerging multimedia applications

#### **Advanced Routing Module provides multilayer services**

- Award-winning, wire-speed Layer 3-4 switching and routing
- DHCP server and NAT for localized dynamic allocation of network addresses and IP management

#### **Standards-based management for rapid deployment and troubleshooting**

- Four groups of RMON integrated at no additional cost
- WebView, HTTP-based configuration and monitoring

Designed to meet growing bandwidth and application requirements yet still fit in today's budget-conscious IT environments, the Matrix E5 is a cost-effective, high-performance switching system developed specifically for the enterprise wiring closet.

The flexible Matrix E5 can be configured as a low-cost Layer 2 switch or, with the optional Advanced Router Module (ARM) installed, the E5 can provide wire-speed Layer 3-4 switching and routing to support more business-critical applications. In either case, the Matrix E5 delivers fault-tolerant features, including a distributed switching architecture that eliminates any single point of failure. Hot swappable fan tray and load-sharing power supplies also help ensure maximum network uptime.

Supporting all important switching, routing and network management industry standards, the Matrix E5 is easily configured and managed remotely using Enterasys' NetSight Management solutions as well as any web browser.

The Matrix E5 is ideal for customers who are transitioning from stackable or standalone switching devices and looking for a scalable, economical solution to support a growing user base, as well as network-intensive applications or high-volume multimedia applications.

## MATRIX E5

### High-Speed, Low-Cost Wiring Closet Switch

#### Specifications

---

##### *Physical*

##### Dimensions

Chassis 58.8 cm (24.5") H x 41.61 cm (17.3") W x 33.6 cm (14") D

Modules 43.87 cm (18.28") H x 5.71 cm (2.38") W x 27.88 cm (11.62") D

##### Weight

Chassis 10.23 kg (22.5 lb)

AC Power Supply 2.72 kg (6 lbs)

##### *Environmental*

Operating Temperature 0° C to 50° C (32° F to 122° F)

Operating Humidity 10% to 90% (non-condensing)

#### Ordering Information

---

<i>Part No.</i>	<i>Description</i>
5C105	Matrix E5 5-slot chassis, fan tray included
5C205-3	510 watt AC power supply for the Matrix E5
5C405	Spare fan tray for the Matrix E5

#### Matrix Modules

For a complete list of modules for the Matrix E5, see page 38.

## MODULES FOR THE MATRIX E7, E6 AND E5

### Matrix E7 and E6 Modules

#### Advanced Router Module

##### **\*6SSRM-02**

Matrix E6 and E7 Advanced Router Module with two expansion slots (Includes router services software)

#### Gigabit Ethernet

##### **6G306-06**

Gigabit Ethernet switching module for the Matrix E7 and E6, 1000Base-SX/LX, 6 ports provided via GBICs (GPIMs sold separately)

##### **6G302-06**

Gigabit Ethernet switching module for the Matrix E7 and E6, 1000Base-TX, 6 RJ45 ports

#### Fast Ethernet

##### **6H352-25**

Fast Ethernet switching module for the Matrix E7 and E6, 24 10/100 RJ45 ports and one VHSIM slot (purchase VHSIM separately)

##### **6H308-48**

Fast Ethernet switching module for the Matrix E7 and E6 with 48 ports via MTRJ 100Base-FX connectors

##### **6H308-24**

Fast Ethernet switching module for the Matrix E7 and E6 with 24 ports via MTRJ 100Base-FX connectors

##### **6H303-48**

Fast Ethernet switching module for the Matrix E7 and E6, 48-port 10Base-T/100Base-TX, RJ21

##### **6H302-48**

Fast Ethernet switching module for the Matrix E7 and E6, 48-port 10Base-T/100Base-TX, RJ45

##### **6H262-18**

10/100 and 1000 Mbps switching module for the Matrix E7 and E6 with 16 auto-negotiable switched Fast Ethernet ports via RJ45 and two GPIM slots (GPIMs sold separately)

##### **6H258-17**

Fast Ethernet 100Base-FX switching module for the Matrix E7 and E6 with 16 MMF ports via MT-RJ connectors and one VHSIM slot

##### **6H259-17**

Fast Ethernet 100 Base-FX switch module for the Matrix E7 and E6 with 16 SMF ports via MT-RJ connectors and one VHSIM slot (build to order)

##### **6H253-13**

12-port 10/100 Fast Ethernet switching module for E6/E7 via one RJ21 connector plus one high-speed VHSIM uplink slot (purchase VHSIM separately)

##### **6H252-17**

Fast Ethernet switching module for the Matrix E7 and E6 with 16 ports via RJ45 interfaces and one high-speed VHSIM uplink slot (purchase VHSIM separately)

##### **6H202-24**

Fast Ethernet switching module for the Matrix E7 and E6 with 24 ports via RJ45 interfaces

##### **6H203-24**

Fast Ethernet switching module for the Matrix E7 and E6 with 24 ports via RJ21 interfaces

#### Ethernet Modules

##### **6E233-49**

Ethernet switching module for the Matrix E7 and E6 with 48 ports via four telcos, and one HSIM slot (purchase HSIM separately)

\*All router modules for the Matrix family accept the same uplinks and cables. See [enterasys.com/switching/matrix](http://enterasys.com/switching/matrix) for specific part numbers.

## MODULES FOR THE MATRIX E7, E6 AND E5

### *Matrix E7 and E6 Modules*

#### **6E123-50**

Ethernet MicroLAN module for the Matrix E7 and E6 with 48 ports: 4 MicroLANs of 12 ports each via four telco connectors. Includes two FEPIM slots (purchase FEPIMs separately)

#### **6E128-26**

Ethernet switching module for the Matrix E7 and E6 with 24 10Base-T ports MMF ST connectors and two FEPIM slots (purchase FEPIMs separately)

#### **6E129-26**

Ethernet switching module for the Matrix E7 and E6 with 24 10Base-T ports via RJ21 connectors and two FEPIM slots (purchase FEPIMs separately)

#### **6E138-25**

Ethernet switching module for the Matrix E7 and E6 with 24 ports via MMF ST connectors and one HSIM slot (purchase HSIM separately)

### *Matrix E5 Modules*

#### **Advanced Router Module**

##### **\*5SSRM-02**

Matrix E5 Advanced Router Module with two expansion slots (Includes router services software)

##### **6SSRLC-TX-AA**

8-port 10/100 Base-TX expansion module for the Matrix E5 Advanced Router Module

##### **6SSRLC-FX-AA**

8-port 100Base-FX expansion module for the Matrix E5 Advanced Router Module

##### **6SSRLC-SX-AA**

2-port 1000 Base-SX expansion module for the Matrix E5 Advanced Router Module

##### **6SSRLC-LX-AA**

2-port 1000 Base-LX expansion module for the Matrix E5 Advanced Router Module

##### **6SSRLC-LX70-AA**

1-port 1000 Base-LX 70km expansion module for the Matrix E5 Advanced Router Module

##### **6SSRLC-SER-AA**

2-port Serial WAN expansion module for the Matrix E5 Advanced Router Module

##### **6SSRLC-SERC-AA**

4-port Serial WAN expansion module with compression for the Matrix E5 Advanced Router Module

##### **6SSRLC-SERCE-AA**

4-port Serial WAN expansion module with compression and encryption for the E5 Advanced Router Module

## MODULES FOR THE MATRIX E7, E6 AND E5

### *Matrix E5 Modules*

#### **Gigabit Ethernet**

##### **5G106-06**

Gigabit Ethernet switching module for the Matrix E5 with 6 ports: 4 1000Base-SX and 2 GBIC via GPIMs (GPIMs sold separately)

##### **5G102-06**

Gigabit Ethernet switching module for the Matrix E5 with 6 10/100/1000Base-TX RJ45 ports

#### **Fast Ethernet Modules**

##### **5H152-50**

48-port 10/100Base-TX Ethernet switching module via RJ45 connectors with uplink slot

##### **5H153-50**

48-port 10/100Base-TX Ethernet switching module via RJ21 connectors with uplink slot

##### **5H103-48**

Fast Ethernet switching module for the Matrix E5 with 48 10/100 Base-TX RJ21 ports

#### **Uplink Modules**

##### **5PIM-G06**

2-port GBIC uplink module for the Matrix E5

##### **5PIM-G02**

2-port 10/100/1000Base-TX uplink module for the Matrix E5

## MATRIX EI

### *Workgroup Switch and Gigabit Workgroup Switch*



Matrix IH582-51

#### **High-density Matrix workgroup switches with flexible uplinks**

- 48 fixed 10/100 Ethernet ports (IH582-51)
- 6 10/100/1000 RJ45 Gigabit Ethernet ports (IG582-09)
- 3 expansion slots support a variety of 10/100 or Gigabit Ethernet connectivity options
- Redundant AC input power

#### **Line-rate performance to support bandwidth-intensive applications**

- 24 Gbps switching capacity
- Exceeds 16 Mpps throughput

#### **Standards-based switching and routing support**

- IEEE 802.1D; IEEE 802.1Q VLANs
- IP v4 Routing; RIP v1/v2 and OSPF; IGMP multicast support

#### **Superior Quality of Service (QoS)**

- 802.1p support 4 queues per port DiffServ support Hardware-based rate limiting

#### **Simplified management**

- Extensive remote management capabilities via NetSight Atlas
- Management performed via CLI, web browser or any SNMP-based application
- Supports RMON as well as extensive port trunking/mirroring

#### **Industry-leading security via Enterasys Secure Harbour framework**

- Supports management authorization and authentication via IP Access Control Lists, RADIUS Authentication
- Delivers port-based MAC address locking and support for the 802.1X Authentication standard



Matrix IG582-09



## MATRIX E1

### Workgroup Switch and Gigabit Workgroup Switch

Ideally suited to high-performance workgroup deployment, the Matrix E1 IH582-51 Workgroup Switch (WS) and IG582-09 Gigabit Workgroup Switch (GWS) are wire-speed Layer 3 switches with full IP routing functionality. The IH582-51 provides 48 fixed 10/100 Ethernet ports and three flexible expansion slots, while the Matrix IG582-09 provides 6 fixed 10/100/1000Base-TX RJ45 ports as well as three flexible expansion slots. In the Matrix WS and GWS switches, the expansion slots support 10/100 and Gigabit Ethernet connectivity.

Both of these switches feature a robust set of switching and routing features and built-in support for RMON, port trunking and port mirroring capability as well as redundant AC power supplies.

Using advanced multilayer frame classification, both the IG582-51 and IG582-09 allow network administrators to meet business needs by differentiating between business-critical and non-business critical traffic, without sacrificing performance.

#### Specifications

---

##### **Physical**

Dimensions	8.9 cm (3.5") H x 44.45 cm (17.5") W x 43.9 cm (17.3") D
Rack Unit Height	2
Weight	8.75 kg (19.23 lb)

##### **Environmental**

Operating Temperature	5° C to +40° C (41° F to 104° F)
Non-Operating Temperature	-30° C to 73° C (-22° F to 164° F)
Operating Humidity	5%-90% RH, non-condensing

#### Ordering Information

---

<b>Part No.</b>	<b>Description</b>
IH582-51	48-Port 10/100 Standalone switch w/3 option slots
IG582-09	6-Port 10/100/1000 switch w/3 option slots
IH-16TX	16-Port 10/100 uplink
IG-2GBIC	2-Port GBIC uplink
IG-2TX	2-Port 10/100/1000Base-T uplink
GPIM-01	Gigabit Ethernet Port Interface Module (GPIM), 1000Base-SX.
GPIM-08	Long Haul GPIM (70Km)
GPIM-09	Gigabit Ethernet Port Interface Module (GPIM), 1000Base-LX.

## MATRIX EI

### *Optical Access Switch With 10 Gigabit Uplink*



IG694-13

#### **Powerful, high-performance optical access switch**

- Support for 12 Gigabit Ethernet ports and a modular 10 Gigabit uplink
- 22 Gbps switch capacity
- Throughput of more than 33 million packets per second
- Transport up to 20 Gbps of data across a single fiber optic cable to cost-effectively combat fiber depletion

#### **Standards-based switching support**

- Supports IEEE 802.1D switching, IEEE 802.1Q VLANs, and IGMP version 1 and version 2

#### **Industry-leading management for rapid deployment and troubleshooting**

- Extensive remote management capabilities with NetSight Atlas
- Supports RFC 2674 VLAN MIB
- Supports Telnet and WebView

## MATRIX EI

### Optical Access Switch With 10 Gigabit Uplink

A 10 Gigabit solution designed to meet growing bandwidth demands, the compact, standalone Matrix EI Optical Access Switch (OAS) provides twelve 1000 Mbps wire-speed ports and one uplink slot for a 10 Gbps module.

The Matrix EI OAS is ideally deployed as a high-speed aggregation device when multiple 1-Gigabit Ethernet segments are aggregated to a central location such as a data center or server farm. With two Matrix EI OAS devices, two groups of up to twelve Gigabit Ethernet devices can be connected with a single fiber optic cable pair. As a result, the Matrix EI OAS provides a cost-effective alternative to trunking multiple Gigabit Ethernet segments between two points, either within a building or campus, since only a single fiber optic pair is needed to make the connection. Prior to the innovative Matrix EI OAS, customers needed to use port trunking to aggregate multiple Gigabit segments, a solution that consumed a fiber segment for each port.

Wire-speed performance and industry-leading features allow the Matrix EI OAS to seamlessly integrate into enterprise and service provider networks. Plug-and-play installation, advanced network management and standards-based switching features make the Matrix EI OAS an industry leader in its class.

#### Specifications

---

##### **Physical**

Dimensions	6.6 cm (2.62") H x 43.8 cm (17.25") W x 38.73 cm (15.25") D
Rack Unit Height	1.5 RU

##### **Environmental**

Operating Temp.	5° to +40° C (41° to +104° F)
Non-Operating Temp.	0° to +70° C (32° to +158° F)
Operating Humidity	5% to 90% RH, non-condensing

#### Ordering Information

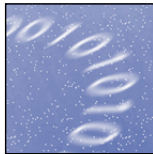
---

<b>Part No.</b>	<b>Description</b>
IG694-13	L2 standalone 8 fixed 1000BaseSX via MT-RJ, 4 mini-GBICs, one uplink for 10Gbps mod.
ZPIMI-01	10Gbps uplink module for the Matrix EI switches
MGBIC-MT01	1000Base-SX Mini GBIC w/MTRJ connector for Matrix EI
MGBIC-LC01	1000Base-SX Mini GBIC w/LC connector for Matrix EI
MGBIC-LC09	1000Base-LX

## WORKGROUP SWITCHES

---

***Low-cost, high-performance connectivity that grows with you***



Designed to provide low-cost, high-performance switching right to the desktop, the Vertical Horizon family delivers 10/100/1000 Mbps connectivity in a convenient standalone or stackable solution. Each switch—whether it's the Vertical Horizon Ethernet, Fast Ethernet or Gigabit Ethernet switch—offers other great features like high-speed uplinks, RMON support, port trunking and at-a-glance port monitoring. You'll enjoy data center performance in a convenient workgroup solution!

## VERTICAL HORIZON

### VH-2402-L3 Fast Ethernet/Gigabit Ethernet Workgroup Switches



Vertical Horizon VH-2402-L3

#### High-performance 10/100/1000 Mbps wire-speed switching

- 24 ports of 10/100 Mbps connectivity and one option slot for high-speed, dual-port Gigabit uplink modules
- Integrated ASIC design provides 9 Gbps internal switching fabric bandwidth and wire speed on all ports

#### Layer 2/3 support

- Aggregate throughput in excess of 6.6 Mpps for Layer 3 switching
- Supports IP routing as well as IGMP, RIP 1 and RIP 2

#### Standards-based VLAN support

- Standards-based VLANs per the IEEE 802.1Q standard allow the VH-2402-L3 to be seamlessly integrated into multivendor networks

#### Simplified management

- Supports TFTP downloads, port mirroring and four groups of RMON
- Provides broadcast control through broadcast throttling
- Monitoring and configuration tasks are easily performed via local console port, web browser, NetSight Atlas management application

The Vertical Horizon VH-2402-L3 Fast Ethernet standalone switch provides 24 10/100 Mbps RJ45 ports and one option slot for expansion to accommodate 1000Base-SX/LX or 1000Base-T uplink modules. With its Layer 3 functionality, the VH-2402-L3 supports RIP 1 & 2, IP static routes and IGMP, thus providing performance and security features typically found only in more costly switching products.

#### Specifications

---

##### Physical

Dimensions	4.4 cm (1.73") H x 44.1 cm (17.36") W x 20.7 cm (8.15") D
Weight	2 kg (4.40 lbs)

##### Environmental

Operating Temp. 32° to 122° F (+0° to +50° C)

Operating Humidity 10 to 90% (non-condensing)

#### Ordering Information

---

Part	Description
VH-2402-L3	24-port 10/100 L2/3 switch w/ 1 dual-port uplink module
Uplink Modules	
VHIM-2GSX-L3	2-port 1000Base-SX L3 uplink module w/ SC connector
VHIM-2GT-L3	2-port 1000Base-T L3 uplink w/ RJ45 connector
VHIM-2GBC-L3	2 GBIC slot L3 uplink

## VERTICAL HORIZON

### VH-8G-L3 Fast Ethernet/Gigabit Ethernet Workgroup Switches



Vertical Horizon VH-8G-L3

#### 1000 Mbps wire-speed switching with Layer 3 support

- 6 ports of 1000 Mbps connectivity via fixed SC ports and two GBIC option slots
- Integrated ASIC-based hardware switching provides 16 Gbps of switching bandwidth and wire speed on all ports
- 8k MAC address table allows integration into large enterprise networks
- Full-duplex operation for each port
- Layer 3 routing for greater performance and control

#### Standards-based support

- IEEE 802.1d and 802.3z compliance ensuring compatibility with other standards-based networking products
- 802.1Q VLAN compliant
- IEEE 802.1p priority queuing specification, supporting 4 priority queues
- 802.3x flow control in full-duplex mode, ensuring packet delivery

The Vertical Horizon VH-8G-L3 Gigabit Ethernet standalone switch provides 6 fixed-SC ports of wire-speed 1000Base-SX connectivity and 2 GBIC option slots for modular 1000Base-X uplinks. With configurable priority queuing per the IEEE 802.1p standard, the VH-8G-L3 supports time-sensitive applications and performs dynamic multicast filtering to prioritize traffic and improve LAN performance.

#### Specifications

---

##### Physical

Dimensions 44.1 cm (17.362") H x 21 cm (8.267") D x 4.3 cm (1.69") W, (1U), 19 inch rack-mount width

Weight 2.61 kg (5.75 lbs)

##### Environmental

Operating Temp. 32° to 104° F (+0° to +40° C)

Operating Humidity 10 to 85% (non-condensing)

#### Ordering Information

---

<b>Part</b>	<b>Description</b>
VH-8G-L3	8-port standalone L2/3 Gigabit switch, 6 fixed SC and 2 GBIC slots
GPIM-01	Gigabit Ethernet Port Interface Module (GPIM), 1000Base-SX
GPIM-08	Long Haul GPIM (70Km)
GPIM-09	Gigabit ethernet Port Interface Module (GPIM), 1000Base-LX

## VERTICAL HORIZON

### *Fast Ethernet/Gigabit Ethernet Workgroup Switches*



Vertical Horizon VH-8G

#### **Vertical Horizon VH-8G Gigabit Ethernet Standalone Workgroup Switch**

##### **1000 Mbps wire-speed switching**

- Provides 8 ports of 1000 Mbps connectivity via fixed SC style connectors
- Integrated ASIC design provides a total of 16 Gbps of internal switching fabric bandwidth and wire speed on all ports; throughput of over 12 Mpps

##### **Standards-based support**

- MIB and standards-based VLANs per IEEE 802.1Q
- Complies with IEEE 802.1d and 802.3, to ensure compatibility with other standards-based networking products
- Supports the IEEE 802.1p priority queuing specification

The Vertical Horizon VH-8G is a high-performance standalone workgroup switch suitable for supporting network-intensive applications and high-volume file transfers. The VH-8G may be successfully deployed in wiring closet and desktop/workstation edge switching applications where Gigabit Ethernet is the desired backbone technology.



Vertical Horizon VH-4802

#### **Vertical Horizon VH-4802 Fast Ethernet Standalone Workgroup Switch**

##### **10/100/1000 Mbps wire-speed switching**

- 48 ports of 10/100 Mbps with two option slots for uplink modules: 1000Base-LX for long distance fiber, 1000Base-SX for shorter distance fiber, or 100Base-FX
- Integrated ASIC design provides a total of 16 Gbps of internal switching fabric bandwidth and wire speed on all ports; throughput of over 10 Mpps

##### **Standards-based support**

- Standards-based VLANs per the IEEE 802.1Q for seamless integration into multivendor networks
- IEEE 802.1Q MIB for easy management and configuration via NetSight management applications

Ideally suited to supporting high-performance Fast Ethernet switching in small to medium-sized network edge applications, as well as high-performance direct end-station connectivity, the standalone Vertical Horizon VH-4802 may be deployed in wiring closet and desktop edge switching applications where Gigabit Ethernet is the desired backbone technology.

## VERTICAL HORIZON

### *Fast Ethernet/Gigabit Ethernet Workgroup Switches*



Vertical Horizon VH-2402S

#### **Vertical Horizon VH-2402S2 10/100/1000 Stackable Workgroup Switch**

##### **High-performance connectivity**

- 24 ports of 10/100 Mbps wire-speed connectivity and two option slots for expansion as well as a dedicated management slot
- Configurable data queuing for priority traffic, per IEEE 802.1p standard

##### **Stackable design**

- Stackable design allows up to seven units high, 168 ports, to be connected via the VH-STACK2 interconnect module and cable

##### **Standards-based VLAN support**

- Standards-based VLANs per the IEEE 802.1Q standard allow the VH-2402S2 to be seamlessly integrated into multivendor networks

The VH-2402S2 provides wire-speed 10/100Base-TX connectivity for the connection of high-performance workstations, file servers, desktop switches and shared access workgroup hubs. Two option slots for modular 100Base-FX and 1000Base-X uplinks modules allow customers flexibility in their backbone connections and enable the stacking of multiple switches. A stack of switches can be managed as a single entity with the addition of the management agent anywhere in the stack.



# VERTICAL HORIZON

## Fast Ethernet/Gigabit Ethernet Workgroup Switches

### Specifications

---

#### Physical

##### Dimensions

VH-8G, VH-2402S	6.4 cm (2.5") H x 44 cm (17.3") W x 28.5 cm D (11.2")
VH-4802	8.4 cm (3.3") H x 44 cm (17.37") W x 35 cm (13.8") D

##### Weight

VH-8G	4.6 kg (10.2 lbs)
VH-4802, VH-2402S2	4.8 kg (10.6 lbs)

#### Environmental

Operating Temperature 0° C to 50° C (32° F to 122° F)

Operating Humidity 5% to 95% (non-condensing)

### Ordering Information for VH-8G

---

<b>Part No.</b>	<b>Description</b>
VH-8G	Gigabit Ethernet standalone switch with 8 fixed SC MMF 1000Base-SX ports
VH-IRDC	Single DC redundant power supply unit for the Vertical Horizon VH-8G

### Ordering Information for the VH-4802

---

<b>Part No.</b>	<b>Description</b>
VH-4802	Fast Ethernet standalone switch with 48 RJ45 10/100TX ports and two rear uplink option slots
VH-IRDC	Single DC redundant power supply unit for the VH-4802

#### Uplink Modules for VH-4802 and VH-2402S2

VHIM1000-S1SX	Uplink module for the with 1-port 1000Base-SX (MMF, SC style connectors)
VHIM100-S1SFX	Uplink module with 1-port 100Base-FX (SMF, SC style connectors)
VHIM100-S2MFX	Uplink module with 2-port 100Base-FX (MMF, SC style connectors)
VHIM1000-S1LX	Uplink module with 1-port 1000Base-LX (Long Reach)
VHIM1000-S1GM	Uplink module with 1-port GBIC connector
VHIM1000-S1TX	Uplink module with 1-port 1000Base-T

## VERTICAL HORIZON

### Fast Ethernet/Gigabit Ethernet Workgroup Switches

#### Ordering Information for VH-2402S2

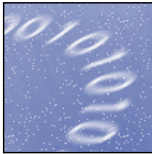
---

<b>Part No.</b>	<b>Description</b>
VH-2402S2	Fast Ethernet stackable switch with 24 10/100 TX ports, 2 rear option slots, and dedicated management slot. (Must purchase 1 VH-SMGMT2 per standalone or 1 per stack)
<b>Uplink Modules</b>	(See previous page)
<b>Management and Interconnect Modules</b>	
VH-SMGMT2	VH-2402S2 management module. (One required per standalone/one required per stack) Includes 5' female/female DB-9 serial console cable
VH-STACK2	VH100-2402S2 stack interconnect module with 32 cm interconnect cable.
<b>Power Supplies</b>	
VH-IRDC	Single DC Redundant Power Supply Unit for VH-Series Switches
<b>Bundles</b>	
VH-S24MGMT	(1) VH-2402S2 and (1) VH-SMGMT2

## VIRTUAL PRIVATE NETWORKS

---

***Secure, cost-effective solutions for telecommuters, mobile workers and branch offices***



Our Aureoan™ Virtual Network solution delivers secure, low-cost connectivity, combining the global reach and convenience of the Internet with the security and control of a private network. Enterprises benefit from improved communication among branch offices and remote users; and a dramatic reduction in IT equipment, bandwidth and management costs. It's the only remote access solution that practically pays for itself!

## AUROREAN NETWORK GATEWAY 7050 AND 3000 SERIES

### *Link Central Offices and Remote Sites to Corporate Network Resources*



Aurorean 7050

#### **Dedicated VPN processing**

- Provides predictable throughput and scalable performance for hundreds or thousands of concurrent PPTP and IPSec tunnels
- Delivers twice the link-level performance of conventional VPNs with a pre-encryption compression algorithm

#### **Secure network access**

- Uses 40-, 56-, 128-, or 168-bit (Triple DES) encryption for maximum security
- Works with existing authentication and authorization services to enforce access control
- Supports virtual subnets for complete flexibility in IP addressing and routing
- Ensures security of all virtual network nodes with password-protected administrative access and cookie-based session expiration

#### **Centralized monitoring/remote configuration**

- Monitor global virtual network from a network operations center
- Configure remotely using any standard web browser

The Aurorean Network Gateway is a universal platform for creating a global, virtual network that connects mobile users, telecommuters, branch offices and regional sites to corporate network resources. Each Aurorean Network Gateway contains a high-speed processor that supports from hundreds to thousands of concurrent VPN connections. The ANG-7050, designed for central site tunnel aggregation of all VPN traffic, supports up to 5,000 simultaneous connections. The ANG-3000, designed for connecting branch offices and trading partners to your corporate network, supports up to 500 VPN tunnels.

A dedicated VPN appliance for performing high-density tunnel aggregation and high-performance packet processing of VPN traffic, the Aurorean Network Gateway provides multiprotocol support and flexible configuration options that enable seamless integration into any network environment. Strong encryption and enforcement of access controls provide maximum security. A redundant system design offers end-to-end high availability. Dedicated tunnel processing power and performance-enhancing compression algorithms optimize throughput and response time for all users on the virtual network.

## AUOREAN NETWORK GATEWAY 7050 AND 3000 SERIES

### *Link Central Offices and Remote Sites to Corporate Network Resources*

#### **Specifications**

---

##### **Physical**

Dimensions 4.3 cm (1.7") x 41.5 cm (16.35") x 55.8 cm (22")

Weight 10.35 kg (23 lbs)

##### **Environmental**

Operating Temperature 10° C to 25° C (50° F to 77° F)

Non-Operating Humidity 95%, non-condensing at 35° C (95° F)

#### **Ordering Information**

---

<b>Part No.</b>	<b>Description</b>
ANG-7050	Aurorean 7050 Network Gateway Head End
ANG-3000	Aurorean 3000 Network Gateway for Site to Site

## AUROREAN POLICY SERVER 7000 AND 3000 SERIES

### *A Scalable Platform for Global VPN Management*



Aurorean 3000

#### **Policy management**

- Controls connection policies, ISP choices, network privileges, and security parameters

#### **Centralized monitoring; remote administration**

- Enables monitoring of the global virtual network from a NOC
- Provides active reporting with standards-based MIB II and private VPN MIB
- Execute network management from anywhere in the enterprise VPN

#### **Operational control**

- Controls authentication requests, runtime monitoring and remote troubleshooting
- Authenticates clients and servers against the embedded database, any standard RADIUS server or through SecurID® ACE/Server®

#### **AutoLink recovery™**

- Ensures high availability for mobile users, telecommuters, site-to-site connections
- Initiates fail-over to an alternative server in the event of hardware failure or service unavailability

#### **TollSaver™**

- Simplifies network access, automatically selects optimum ISP connection

A scalable platform developed uniquely for global VPN management, the Aurorean Policy Server provides centralized authentication, policy-based access control, configuration management, fault management and performance optimization for the enterprise VPN.

The central authority for administering, maintaining and controlling user and group profiles, the Aurorean Policy Server defines dialing characteristics, access rights, administrative elements, security settings, cost policies and system-wide VPN parameters. Policies are checked and updated during every VPN session, then locked down and enforced in the VPN client.

Aurorean Policy Server can be securely administered from anywhere on the virtual network. Web-based configuration and SNMP monitoring agents allow for centralized management of distributed nodes.

## AUOREAN POLICY SERVER 7000 AND 3000 SERIES

### *A Scalable Platform for Global VPN Management*

Detailed reports and analysis tools enable the network administrator to optimize VPN use by monitoring tunnel performance, availability, utilization and cost. Administrators can drill down to the individual user session or distributed Network Gateway, and analyze overall usage trends from the entire VPN. System level redundancy, combined with AutoLink Recovery technology, provide high availability across the virtual network.

#### **Specifications**

---

##### ***Physical***

Dimensions	4.3 cm (1.7") x 41.5 cm (16.35") x 55.8 cm (22")
Weight	10.35 kg (23 lbs)

##### ***Environmental***

Operating Temperature	10° C to 25° C (50° F to 77° F)
Non-Operating Humidity	95%, non-condensing at 35° C (95° F)

#### **Ordering Information**

---

<b><i>Part No.</i></b>	<b><i>Description</i></b>
APS-7000	Aurorean 7000 Policy Server
APS-3000	Aurorean 3000 Policy Server

## NETWORK GATEWAY 1000 SERIES

*Securely Extend the Enterprise to SOHO, Telecommuters and Day Extenders*



Auroran 1102/1105

### **Comprehensive VPN protocol support**

- Supports IPsec and PPTP tunneling—with MPPE, ARCFour, DES & 3DES encryption, HMAC SHA1 and MD5 authentication, and Internet Key Exchange (IKE)
- Compatible with broadband Internet access (DSL/cable) and most workstation operating systems
- Allows IPsec to transparently pass through ISP-based Network Address Translation (NAT) servers

### **Simplified device configuration provides ease of use**

- Plug-and-play installation with browser-based administration
- EZ-IPsec™ auto-configuration for fast, easy VPN set up

### **Remote management and central monitoring**

- Configure, update and monitor via an encrypted VPN tunnel with any web browser
- Manage locally via internal Ethernet interface and web browser
- SNMP MIB for easy integration with network management systems
- Auto-Link Recovery™ provides high availability for mission-critical applications

### **Powerful performance and IP features**

- 3 Mbps IPsec throughput
- Supports RIP v2 routing for dynamically assigned local routes and easy configuration
- Seamless connectivity to service provider networks with PPPoE protocol support
- Includes Dynamic Host Control Protocol (DHCP) server to assign IP addresses from a pre-defined address pool

### **Inherent security features**

- Uses port filtering and packet inspection firewall, protecting SOHO locations and corporate resources from external threats



## NETWORK GATEWAY 1000 SERIES

### *Securely Extend the Enterprise to SOHO, Telecommuters and Day Extenders*

The Aureoran ANGI102 and ANGI105 Small Office/Home Office VPN Gateways are ideally suited to extending critical business systems—including Groupware Messaging, Customer Relationship Management and Enterprise Resource Planning—to small remote offices, telecommuters and day extenders. These gateways deliver state-of-the-art security technology with powerful management and configuration tools for the network administrator. Combined with a DSL modem or cable modem, the ANGI102 and ANGI105 gateways provide “always-on” VPN access, while their NAT capability and embedded firewall protect the integrity of confidential information. DHCP IP address management and RIPv2 routing add to the rich feature set.

The ANGI102 is a low-cost virtual private network gateway that simply and securely connects remote locations via encrypted VPN tunnels. The ANGI105 includes all the functionality of the ANGI102 but adds a 4-port 10/100 Ethernet hub and VPN performance accelerator.

The network administrator is able to monitor and configure multiple ANGI102 and ANGI105 gateways from the corporate data center—there is no requirement for remote networking expertise. End users can quickly and securely access the VPN with one-button configuration using Enterasys Networks’ unique EZ-IPsec auto configuration features. This flexible device is an integral part of Enterasys’ award-winning Aureoran Virtual Network Solution, renowned for best-in-class VPN policy management and a powerful client application.

#### **Specifications**

---

##### ***Physical Specifications***

Interface Options	Desktop form factor with external 10Base-T Ethernet interface and internal 10Base-T Ethernet interface (ANG-1102) or internal 4-port 10Base-T/100Base-TX Ethernet hub (ANG-1105)
Dimensions	20.8 cm (8.2") W x 4.3 cm (1.7") H x 15.8 cm (6.2") D
Weight	.73 kg (1.6 lbs)

##### ***Environmental Specifications***

Operating Temperature	0° C to 40° C (32° F to 104° F)
Non-Operating Temperature	-20° C to 70° C (-4° F to 158° F)
Operating Humidity	0 to 95%, non-condensing

#### **Ordering Information**

---

<b>Part No.</b>	<b>Description</b>
ANGI102	2-Port VPN Hard Client
ANGI105	2-Port VPN Hard Client with 3 Additional 10/100 LAN ports

## AUROREAN CLIENT SOFTWARE

### *Simple and Efficient Enterprise VPN Access and Control*



#### **Intelligent access**

- Simplifies mobile remote access with a single-button connect process
- Selects the closest Internet access (POP) number from any location worldwide

#### **Total control**

- Controls the ISP connection and the secure encrypted VPN tunnel
- Pre-defines ISP service selection and POP prioritization to permit different classes of service for each user group

#### **Service provider independent**

- Works with any Internet service provider network
- Pre-bundled with POP numbers of more than 40 ISPs worldwide

#### **Technology agnostic**

- Access the enterprise VPN via any Internet connection including analog (dial-up) modem, LAN adapter, cable modem, ISDN adapter, DSL modem or any IP-based connection, including wireless and satellite

#### **High availability and dynamic fault recovery**

- Fails over to an alternate network gateway when needed
- Detects and corrects mobile access faults by consulting a database of network diagnostic tests and fault recovery scripts

Aureorean Client Software is a windows-based application that simplifies operations for the end user, thanks to a recognizable graphical user interface and intelligent system software that automates network access and fault recovery.

Support for any ISP provides service provider independence, giving maximum flexibility over carrier choice. ISP changes are made centrally and new POPs are downloaded seamlessly to remote users over the VPN tunnel. Its TollSaver™ service automatically selects the optimum ISP connection by finding the local access number with the lowest cost and highest performance available.

## AUROREAN CLIENT SOFTWARE

### *Simple and Efficient Enterprise VPN Access and Control*

Aurorean Client Software performs a high-efficiency compression algorithm that improves link-level performance by 50% to 100%. This provides remote users with the highest level of bandwidth utilization whether they are using low-speed analog modems or high-speed cable modems.

With Aurorean's centralized management, user configuration options can be centrally defined and revised by the network administrator then downloaded to remote desktops where policies are locked-down and enforced in the VPN client. Detailed, session-level user connection logs are automatically uploaded to the Aurorean Policy Server for easy troubleshooting.

#### **System Requirements (client)**

---

Pentium 90 or better processor

30 MB of available hard disk space, 16 MB RAM (32 MB recommended)

Windows 95 / Windows 98, SE / Windows NT / Windows 2000

#### **Ordering Information**

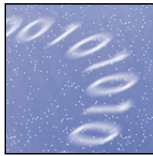
---

Aurorean Client Software is bundled with every Aurorean Virtual Network system

## WIRELESS LANs

---

***Award-winning wireless that securely and affordably empowers a more mobile workforce***



Enterasys' highly touted RoamAbout indoor and outdoor wireless LAN is a quick, secure and cost-effective way to provide instant connectivity to the network anywhere a cable or wire won't reach. Now all users can enjoy uninterrupted access to e-mail, the web or intranet—even when moving from one building to the next! Easy to set up and easy to manage, RoamAbout is revolutionizing the way people rely on the network to do business.

## ROAMABOUT R2 WIRELESS ACCESS PLATFORM

### *Multilayer Performance and Control in a Wireless LAN*



#### **Expandable architecture for higher performance, seamless interoperability**

- First to market AP that supports 802.11b, 802.11a and 802.11g technologies bringing performance to 54Mb/s
- Dual slot for multiple technology support simultaneously
- Built on a Layer 3-4 technology for greater functionality
- Offers forward compatibility/upgradability to higher speed WLAN standards
- Point to Point and Point to MultiPoint Support on same platform
- 10/100 Ethernet uplink scales to meet evolving bandwidth needs as well as the requirements of multiple high-speed radios

#### **Total system manageability including policy management**

- Management scales to support thousands of wireless nodes
- Manageable from RoamAbout AP Manager, NetSight, SNMP v3, Telnet and the Web
- 802.1x/Extensible Authentication Protocol enables policy-based networking
- Dynamic load balancing spreads traffic across multiple access points

#### **Remote power injection reduces costs**

- Saves on installation costs by powering the RoamAbout through the network cables

#### **Industry-leading security**

- 128-bit for the highest level of security
- IEEE 802.1x Authentication
- Rapid ReKeying provides for a high level of security based on the 802.1x standard.

Highly-customizable and affordable, RoamAbout R2 is an expandable WLAN platform that provides advanced networking features and intelligence, an upgradable architecture, and support for multiple technologies. These superior features offer a smooth technology migration, eliminating the need to upgrade an entire infrastructure or discard previously purchased PC radio cards, thus ensuring a higher return on investment and a lower total cost of ownership.

When radios supporting higher rate standards become available, the R2 will run the high-rate radios and the current 802.11b radios simultaneously. In addition, the R2 delivers on the promise of 802.1x/Extensible Authentication Protocol and with it, User Personalized Networking, enabling policy-based networking by making the network aware of users and their classifications.

## ROAMABOUT R2 WIRELESS ACCESS PLATFORM

### *Multilayer Performance and Control in a Wireless LAN*

Importantly, the RoamAbout R2 offers the same industry-leading features inherent in the RoamAbout Access Point 2000: enhanced user mobility with uninterrupted access, vendor interoperability, easy installation and upgrades, free configuration tools—as well as the vital security you expect and the industries first Remote Power offering over Ethernet solution.

#### **Specifications**

---

##### **2.4 GHz PC Card Option**

###### **Physical**

Dimensions 220 mm (8.63") x 214 mm (8.42") x 57.6 mm (2.27")

##### **RoamAbout R2 Access Platform Specifications**

###### **Physical**

Dimensions 62.3 mm (2.45") D x 173.4 mm (6.84")  
W x 200.8 mm (7.90") L

Weight 1.47 kg (3.25 lbs); weight includes plastic décor cover

###### **Environmental**

Operating Temperature -5°C to 50°C (23°F to 122°F)

Non-Operating Temperature -30°C to 66°C (-22°F to 151°F)

Operating Humidity 5 to 95% (non-condensing)  
Return air Plenum Rated

#### **Ordering Information**

---

<b>Part No.</b>	<b>Description</b>
RBTR2-AB	RoamAbout R2 wireless access platform (worldwide)
RBTRC-MZ	RoamAbout Mezzanine adapter for additional radio card
CSIBD-**-I28	RoamAbout PC Radio Card (128-bit RC4 encryption)
CSIBD-**	RoamAbout PC Radio Card

[Note: \*\* Use AA for FCC (North America and Australia), AB for ETSI (Europe and other regions), AF for Singapore, AJ for Japan]

## ROAMABOUT R2 WIRELESS ACCESS PLATFORM

### *Multilayer Performance and Control in a Wireless LAN*

#### **Optional Products**

CSIPT-MP	RoamAbout Activation Key for MultiPoint AP
CSI6D-**-128	RoamAbout PC Card w/128 bit encryption 6-card bundle
CSI6D-**	RoamAbout PC Card w/40 bit encryption 6-card bundle
CSI40D-**-128	RoamAbout PC Card w/128 bit encryption 40-card bundle
CSI40D-**	RoamAbout PC Card w/40 bit encryption 40-card bundle
RBT6D-AA-SP6	RoamAbout R2 Starter pack. Includes one R2, six 128 bit FCC PC Card and one Range Extender Antenna
RBT6D-AB-SP6	RoamAbout R2 Starter pack. Includes one R2, six 128 bit ETSI PC Card and one Range Extender Antenna
CSIBB-IP	RoamAbout ISA Carrier (Requires a PC Card CSIBD-**) )
CSIBD-PC	RoamAbout PCI Carrier (Requires a PC Card CSIBD-**) )
CSIBB-IA	RoamAbout Indoor Antenna—used for desktop PC applications where you want to extend the antenna or when Access Points are not ideally located
CSIWS-RM	RoamAbout rack mount for Remote Power Injector (holds 3 injectors)
CSIWS-RMPER	RoamAbout Remote Power Injector (spare/replacement)
RBTR2-PS3	RoamAbout Replacement/Redundant Power Supply 120-240 Vac

## ROAMABOUT ACCESS POINT 2000

### *High-Performance, 802.11b-compliant, Indoor Wireless LAN Connectivity*



#### **RoamAbout™ Access Point 2000 And High-Rate PC Card**

##### **Seamless interoperability**

- IEEE 802.11b 11 Mbps compliance and multivendor interoperability provide seamless connectivity to other vendors' 802.11b products

##### **Power injection**

- Free, first to market, patent-pending power injector saves hundreds of dollars in installation costs by powering the Access Point through network cables

##### **Industry-leading security**

- 128-bit for the highest level of security
- IEEE 802.1x Authentication
- Rapid ReKeying provides for a high level of security based on the 802.1x standard.

##### **Simplified configuration/diagnostic tools**

- Free RoamAbout AP Manager software allows easy configuration of one or more Access Points
- Free client diagnostic tools identify signal strength and other information to identify optimum Access Point placement
- Enhanced access control completely controls who accesses the network

Designed for a workforce on the go, the RoamAbout wireless solution offers enhanced user mobility, ease of installation, extended connectivity, increased productivity, and great cost savings. Benefit from award-winning features including uninterrupted access, 802.11b compliance, vendor interoperability, easy upgrades and free configuration tools—and vital security.

The RoamAbout family is based on two key components: the Access Point 2000 which quickly and easily connects to your wired LAN via Unshielded Twisted Pair, and an 11 Mbps 2.4 GHz Direct Sequence Spread Spectrum (DSSS) wireless Ethernet PC Card.

A full-functioning switch, the Access Point connects to the wired LAN by a 10Base-T Ethernet connection and provides Layer 2 bridge functionality. An IEEE 802.11b Direct Sequence Spread Spectrum (DSSS) wireless network PC card, the RoamAbout PC Card functions like any standard wired Ethernet card, but uses radio frequencies instead of a cable for the LAN connection. The RoamAbout PC Card remains connected to the network by seamlessly switching to a different Access Point as you roam throughout the network. The RoamAbout PC Card fits into any type II PC card slot on laptop devices, and can be installed in desktop computers without PCMCIA using the optional RoamAbout ISA adapter card.



## ROAMABOUT ACCESS POINT 2000

### High-Performance, 802.11b-compliant, Indoor Wireless LAN Connectivity

#### Specifications

---

##### Environmental

Operating Temperature 5° C to 50° C (41° F to 122° F)

##### Non-Operating

Temperature -40° C to 66° C (-40° F to 151° F)

Operating Humidity 95% max (non-condensing)

Return air Plenum Rated

#### Ordering Information

---

##### Part No.

##### Description

CSIWS-\*

RoamAbout Access Point, requires PC card  
(\* Use AA for 120V & AB for 120/240V power supply)

CSIBD-\*\*-128

RoamAbout PC Radio Card (128-bit RC4 encryption)

CSIBD-\*\*

RoamAbout PC Radio Card

[Note: \*\* Use AA for FCC (North America and Australia), AB for ETSI (Europe and other regions), AF for Singapore, AJ for Japan]

##### Optional Products

CSIPT-MP

RoamAbout Activation Key for MultiPoint AP

CSIPT-RK

RoamAbout AP 2000 802.1x Activation Key

CSI6D-\*\*-128

RoamAbout PC Card w/128 bit encryption  
6-card bundle

CSI6D-\*\*

RoamAbout PC Card w/40 bit encryption  
6-card bundle

CSI40D-\*\*-128

RoamAbout PC Card w/128 bit encryption  
40-card bundle

CSI40D-\*\*

RoamAbout PC Card w/40 bit encryption  
40-card bundle

CSIBB-IP

RoamAbout ISA Carrier (Requires a PC  
Card CSIBD-\*\*)

CSIBD-PC

RoamAbout PCI Carrier (Requires a PC  
Card CSIBD-\*\*)

CSIBB-IA

RoamAbout Indoor Antenna—used for desktop  
PC applications where you want to extend the  
antenna or when Access Points are not ideally  
located

## ROAMABOUT ACCESS POINT 2000

### *High-Performance, 802.11b-compliant, Indoor Wireless LAN Connectivity*

CSIWS-RM	RoamAbout rack mount for Remote Power Injector (holds 3 injectors)
CSIWS-RMPER	RoamAbout Remote Power Injector (spare/replacement)
CSIWS-WM	RoamAbout Security Box for AP 2000
RBTR2-PS3	RoamAbout Replacement/Redundant Power Supply 120-240 Vac



#### **Wireless Ethernet Adapter**

With the RoamAbout Wireless Ethernet Adapter, you can connect any Ethernet-equipped workstation—including equipment from SUN, HP, IBM and Apple—to your high-performance wireless network. You can also connect printers and X-terminals. Operation is transparent to network protocols and applications.

<b>Part No.</b>	<b>Description</b>
CSISA-AX	RoamAbout 11 Mbps Wireless-to-Ethernet station adapter. Requires a RoamAbout PC card (CSIBD-**), sold separately

## ROAMABOUT OUTDOOR WIRELESS

### *High-Performance, Seamless Building-to-Building LAN Connectivity*



#### **Point-to-Point and Point-to-Multipoint Outdoor Solution**

- Compatible RoamAbout R2 and RoamAbout AP 2000

#### **Easy to install and manage**

- Quick and easy installation; no monthly fees; no special permits or licenses
- Plug-and-play; reliable connectivity without costly traditional wiring
- With the RoamAbout AP Manager, configure and manage Access Points, and determine best antenna orientation to guarantee a reliable link
- Multichannel operation allows separate, non-overlapping wireless links in the same area

#### **Flexibility and investment protection**

- Flexible configuration for both indoor and outdoor use eliminates need to purchase new products if environments change

#### **Industry-leading security**

- 128-bit encryption delivers cutting-edge wireless technology without sacrificing security
- Standard RMON support/SNMP compliant

Ideal for any organization with multiple buildings seeking to avoid recurring wide area charges or the installation of a cable plant infrastructure, RoamAbout Outdoor Solutions extend wireless connectivity for improved user mobility and productivity—between two buildings or across an entire campus.

RoamAbout is based on the IEEE 802.11 standard to provide seamless wireless data communications. Both indoor and outdoor wireless solutions consist of the award-winning RoamAbout APs and radio cards for in-building applications—external antennas make it an outdoor solution. When the 14dB antennas are added, the outdoor wireless configuration is extended to 3.5 miles at an impressive 11 Mbps throughput. When combined with any third-party 24dB antenna, distances of 25 miles at 11 Mbps can be achieved.

Customers who lease or purchase T1 lines will find that RoamAbout is an extremely easy technology to deploy, as well as a viable, cost-effective alternative to traditional T1 lines.

Enterasys provides all the software management tools needed to configure and manage Access Points and clients. Enterasys was the first to offer 128-bit encryption capability for wireless bridges.

## ROAMABOUT OUTDOOR WIRELESS

### High-Performance, Seamless Building-to-Building LAN Connectivity

#### Specifications

---

##### 14-dBi Directional Antenna

###### Physical

Size	45.7 cm (18")
Mounting Method	Vertical mast with an outside diameter between 35 mm (1.4") and 42 mm (1.6") using u-bolts

###### Environmental

Operating Temperature	-40° C to 60° C (-40° F to 140° F)
Wind/Survival	At least 128 km/h (80 mph)

##### 7-dBi Omni-Directional Antenna

###### Physical

Size	45.7 cm (18")
Mounting Method	Vertical mast with outside diameter up to 51 mm (2")

###### Environmental

Operating Temperature	-40° C to 60° C (-40° F to 140° F)
Wind/Survival	At least 128 km/h (80 mph)

#### Ordering Information

---

RBTED-AA *	RoamAbout 11 Mbps Outdoor Solution Bundle. Includes the RoamAbout R2 AP (RBTR2-AB), 14 dBi Yagi antenna (CSIES-AB-Y14), 50' RF cable (CSIES-AB-50), lightning arrester (CSIES-AB-LP), 50 cm pigtail cable (CSIES-AB-PT50), 11 Mbps adapter card with 128 bit encryption (CSIBD-**-128) Kit for FCC approved countries
RBTED-AB *	RoamAbout 11 Mbps Outdoor Solution Bundle. Includes the RoamAbout R2 AP (RBTR2-AB), 14 dBi Yagi antenna (CSIES-AB-Y14), 50' RF cable (CSIES-AB-50), lightning arrester (CSIES-AB-LP), 50 cm pigtail cable (CSIES-AB-PT50), 11 Mbps adapter card with 128 bit encryption (CSILD-AB) Kit for ETSI approved countries

## ROAMABOUT OUTDOOR WIRELESS

### High-Performance, Seamless Building-to-Building LAN Connectivity

RBTED-AA-M07 or RBTED-AB-M07

RoamAbout 11 Mbps Outdoor Solution with Omni Antenna Bundle Configuration includes the same components as above, but the exception that the Yagi is replaced with the 7 dBi Omni-Directional Antenna (CSIES-AB-M07)

*\*One kit needed for each end of the link. RoamAbout solutions may also be purchased individually using single part numbers.*

#### Optional Products:

CSIPT-MP

RoamAbout Multipoint Activation Key

CSILD-\*\* & CSILD-\*\*-128

RoamAbout HiGain Matched PC Cards for outdoor use with the Yagi Antennas

*[Note: \*\* Use AB for ETSI (Europe and other regions), AF for Singapore, AJ for Japan]*

CSIES-AB-PT50

RoamAbout Pigtail Cable (50cm) to connect the RoamAbout PC Card to an external antenna. The cable has a small connector on one end and an industry-standard N-connector on the other end. The small connector plugs into the PC Card, and the N-connector is screwed onto the RoamAbout Lightning Protector.

CSIES-AB-PT250

RoamAbout Pigtail Cable (250cm) to connect the RoamAbout PC Card to the Vehicle-Mount Antenna (CSIES-AB-M05)

CSIES-AB-LP

Lightning Arrestor protects the electronic equipment from lightning damage

CSIES-AB-C20

RoamAbout RF Cable to connect the lightning arrester to the outdoor antenna. 20 feet of medium loss cable

CSIES-AB-C50

RoamAbout RF Cable to connect the lightning arrester to the outdoor antenna. 50 feet of low loss cable

CSIES-AB-C75

RoamAbout RF Cable to connect the lightning arrester to the outdoor antenna. 75 feet of low loss cable

## ROAMABOUT OUTDOOR WIRELESS

### **High-Performance, Seamless Building-to-Building LAN Connectivity**

**CSIES-AB-M05**      RoamAbout 5 dBi Vehicle-Mount Antenna, a broadband antenna for the 2.4 GHz frequency band featuring an omni-directional pattern with a nominal gain of 5 dBi. The vehicle-mount antenna can be mounted on vehicles, such as forklift trucks, that need continuous access to networked data.

*Note: You must use the CSIES-AB-PT250 with the mobile antenna.*

**CSIES-AB-M07**      RoamAbout 7 dBi Omni-Directional Antenna, a broadband antenna for the 2.4 GHz frequency band featuring an omni-directional pattern with a nominal gain of 7 dBi. This antenna is encapsulated in a weatherproof protective covering. With the hardware provided, this vertically-polarized antenna can be mounted on an antenna mast with an outside diameter of up to 51mm (2in).

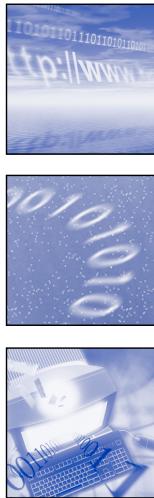
**CSIES-AB-Y14**      RoamAbout 14 dBi Directional Antenna, a high-gain antenna for the 2.4 GHz frequency band. The antenna is a totally enclosed 16-element Yagi designed for point-to-point communications. The antenna is normally mounted on a mast and vertically polarized.

**CSIWS-RMPER**      RoamAbout Remote Power Injector (spare/replacement)

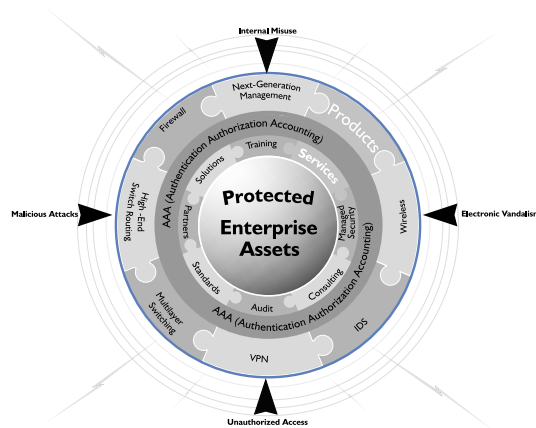
**RBTR2-PS3**      RoamAbout Replacement/Redundant Power Supply 120-240 Vac

# SECURITY SOLUTIONS

*A holistic solution to protect the enterprise internally and externally*

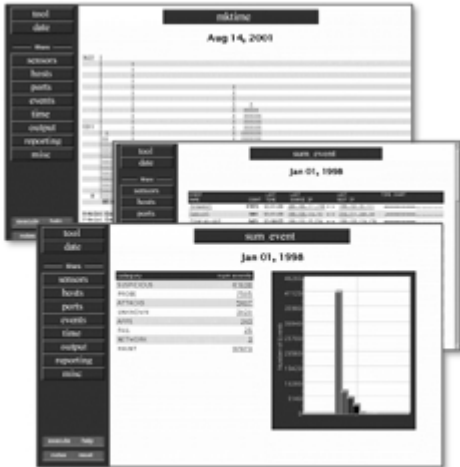


Under the Secure Harbour™ architecture, Enterasys leverages the advanced security-related features of its core networking products while also providing dedicated security products—such as the Dragon™ Intrusion Detection System. The Secure Harbour framework secures all parts of the enterprise network with the most advanced traffic profiling and intrusion detection solutions available. Unlike other industry security models, Secure Harbour protects the entire networking infrastructure, including an organization’s public Internet site, intranet and extranet.



# DRAGON INTRUSION DETECTION SYSTEM

## *Security and Intrusion Detection for Enterprise Networks*



### **Complete intrusion detection solution**

- Award-winning network-based detection via Network Sensor
- Modular and extensible host-based protection via Host Sensor
- Centralized management monitoring, analysis and reporting via Enterprise Management Server
- Enterprise Management Server also includes advanced policy management

### **Scalability to fit any size enterprise**

- Dragon architecture scales to meet the largest deployments with the flexibility to meet the smallest environment

### **High-bandwidth support**

- Network Sensors support high-bandwidth networks, up to Gigabit, without dropping packets

### **Enterprise-wide security monitoring**

- Dragon monitors third-party firewalls, applications, web servers and even other intrusion detection products
- Provides the critical information to correlate security events across the entire enterprise
- Results in better decision making and reduced overall operational costs

### **Leading detection capabilities**

- Largest signature base in depth and breadth with support for firewalls, web servers and other applications
- Signatures are updated continuously and posted weekly—providing detection of new attacks immediately after threats become known



## DRAGON INTRUSION DETECTION SYSTEM

### *Security and Intrusion Detection for Enterprise Networks*

The Dragon Intrusion Detection System is an integral component of Enterasys' Security offerings. The award-winning Dragon line of intrusion detection products monitors network, server and firewall activity for signs of suspicious and malicious activity, and offers comprehensive features that bring improved security to your enterprise network.

#### **The Dragon 6.0 Product Line Includes...**

- **Dragon Network Sensor**—High-speed network intrusion detection available via software or appliance
- **Dragon Host Sensor**—Host-based intrusion detection delivered via a modular and flexible architecture for today's most common operating systems
- **Dragon Enterprise Management Server**—Comprehensive monitoring and control capabilities delivered via:
  - **Policy Management.** Web-based management providing central, enterprise-wide management of small or large-scale Dragon deployments
  - **Security Information Management.** Centralized collection of all security information. Web- and MS Windows-based analysis tools for monitoring events in real-time, correlating activity and performing forensic and trend analysis

Together, Dragon provides an integrated solution for detecting misuse and attacks across the entire IT infrastructure. It's the only solution to combine events on the network with those in the host, firewall, and application, providing complete detection for the small and large enterprise. With comprehensive analysis and real-time monitoring capabilities, Dragon delivers a higher level of protection to the business-critical IT infrastructure.

# DRAGON INTRUSION DETECTION SYSTEM

## Security and Intrusion Detection for Enterprise Networks

### Specifications

---

#### **FE50 Network Sensor Appliance**

Performance Rating: 50 Mbps  
Architecture: Intel PIII  
Memory: 256 MB, 20 Gig IDE HD  
NICS: 3 x 10/100 copper  
Supports multi-interface monitoring

#### **FE200 Network Sensor Appliance**

Performance Rating: 200 Mbps  
Architecture: Dual Intel PIII  
Memory: 512 MB, 18 Gig SCSI HD  
NICS: 2 x 10/100 copper  
NIC: 1 x 10/100/1000 copper NIC  
Supports multi-interface monitoring

#### **GE200 Network Sensor Appliance**

Performance Rating: 200 Mbps  
Architecture: Dual Intel PIII  
Memory: 512 MB, 18 Gig SCSI HD  
NICS: 2 x 10/100 copper  
NIC: 1 x Fiber Gigabit NIC

#### **GE500 Network Sensor Appliance**

Performance Rating: Unlimited  
Architecture: Dual Intel XEON  
Memory: 1024 MB, 18 Gig SCSI HD  
NICS: 2 x 10/100/1000 copper  
NIC: 1 x Fiber Gigabit NIC\*

\*Optional copper Gigabit NIC configuration

### Operating Systems

Network Sensor: Solaris (versions 8 and 9) SPARC, Red Hat Linux (2.4 kernel, versions 7.2 and 7.3)  
Host Sensor: Windows NT/2K/XP\*, Solaris (versions 8 and 9) SPARC, Red Hat Linux (versions 7.2 and 7.3)  
Enterprise Management: Windows NT/2K/XP\*, Solaris (versions 8 and 9) SPARC, Red Hat Linux (versions 7.2 and 7.3)

\*Windows client real-time event viewer

# DRAGON INTRUSION DETECTION SYSTEM

## Security and Intrusion Detection for Enterprise Networks

### Ordering Information

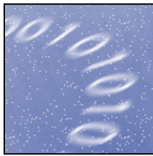
---

<b>Part No.</b>	<b>Description</b>
<b>Network Sensor</b>	
DSNSS-E	Dragon Network Sensor Software for Ethernet
DSNSS-FE	Dragon Network Sensor Software for Fast Ethernet
DSNSS-GE	Dragon Network Sensor Software for Gigabit Ethernet
<b>Host Sensor</b>	
DSHSS-WIN	Dragon Host Sensor Software for Windows
DSHSS-LNX	Dragon Host Sensor Software for Linux
DSHSS-SOL	Dragon Host Sensor Software for Solaris
<b>Management</b>	
DSEMS	Dragon Enterprise Management Software
<b>Network Sensor Appliances</b>	
DSNSA-FE50-TX	Dragon FE50 Network Sensor Appliance
DSNSA-FE200-TX	Dragon FE200 Network Sensor Appliance (Copper NIC)
DSNSA-GE200-SX	Dragon GE200 Network Sensor Appliance (Fiber NIC)
DSNSA-GE500-TX	Dragon GE500 Network Sensor Appliance (Copper NIC)
DSNSA-GE500-SX	Dragon GE500 Network Sensor Appliance (Fiber NIC)
<b>Management Appliances</b>	
DSEPA	Dragon EFP Appliance
DSEMA	Dragon Enterprise Management Server Appliance
<b>Sensor/Manager Appliances</b>	
DSISA-TX	INS <sup>2</sup> —Integrated Network Sensor/Server (Copper NIC)
DSISA-SX	INS <sup>2</sup> —Integrated Network Sensor/Server (Fiber NIC)

## ENTERPRISE MANAGEMENT SOLUTIONS

---

*Highly graphical tools to maximize network availability, visibility and control*



Businesses look to Information Technology to deliver tangible e-commerce business processes which maximize information capital resource availability, decrease security risks and increase service availability. Management solutions from Enterasys provide real-world e-business solutions through intuitive, scalable, multivendor configuration and management solutions that are designed to provide a solid return on investment for your organization.

## NETSIGHT ATLAS CONSOLE

### *System-Level Management Solution*



#### **System-level command and control console**

- Multi-element management approach bridges the functionality gap between complex network management systems and traditional element managers
- Provides system-level configuration, monitoring and troubleshooting capabilities such as device discovery, event management, logging and application maintenance via the Atlas Console
- Atlas Compass tool can be used to locate and report on the people and computers using the network

#### **Incorporates the best attributes of enterprise network management systems and element managers**

- Non-monolithic, highly flexible, easily integrated
- Offers a balance between features, functionality and price

#### **Manage groups of network entities simultaneously**

- Enables management and configuration of ports, devices, device classes, users, etc.

#### **Enhanced functionality via NetSight Atlas Plug-In Applications**

- Optional modules provide specific, value-added capabilities to NetSight Atlas
- Use the advanced features of Enterasys hardware while reducing administrative burden and lowering total cost of ownership
- Applications include NetSight Atlas Policy Manager, NetSight Atlas Inventory Manager and NetSight Atlas Access Control List Manager

#### **Wide platform support**

- Use on Windows NT/2000/XP or Solaris operating systems
- Can be deployed with HP OpenView on Solaris, providing a complete solution with one of the most popular NMS platforms and operating systems in the market

# NETSIGHT ATLAS CONSOLE

## *System-Level Management Solution*

NetSight Atlas is the powerful command and control console from which NetSight management applications are launched. Designed to manage, monitor and configure an Enterasys network as a holistic system, NetSight Atlas improves network visibility and simplifies operation and management, making the network a less complex, utility-like service aligned to meet the needs of the business. In addition, NetSight Atlas' system-level approach effectively bridges the functionality gap between complex network management systems and traditional single element manager applications.

A system-level management tool, NetSight Atlas' inherent flexibility helps each enterprise meet the unique demands of its own business. "Plug-in" applications can be integrated into the Atlas Console, enabling organizations to take advantage of advanced features. Applications include NetSight Policy Manager, NetSight Atlas Inventory Manager and NetSight Atlas Access Control Manager. For added flexibility, NetSight Atlas has been designed to work with Network Management Platforms such as HP OpenView.

NetSight Atlas is a critical component of Enterasys strategic initiatives: the User Personalized Network and Secure Harbour.

### **Specifications**

---

#### **System Requirements**

Solaris OS	Supports Solaris 2.7, 2.8
Minimum:	Ultra 10/20, 256 MB RAM
Recommended:	Ultra 30/60, 512 MB RAM 300 MB free disk space
Windows NT/2000/XP	Minimum: P3-450 MHz, 256 MB RAM
Recommended:	P3-866 MHz, 512 MB RAM 300 MB free disk space

### **Ordering Info**

---

<b>Part No.</b>	<b>Description</b>
NSA-CD	NetSight Atlas CD
NSA-LIC	NetSight Atlas license for one copy of NetSight Atlas

## NETSIGHT ATLAS CONSOLE LITE

### *System-Level Management for Smaller Enterprises*



#### **System-level command and control console**

- Basic management software for a network of 300 nodes or less
- Used as a central component for NetSight Atlas Plug-In applications when only basic network management functionality is required
- Provides monitoring and troubleshooting capabilities such as device discovery, event management, logging and application maintenance via the Atlas Console
- Predefined Flex Views provide pertinent information with a few clicks of the mouse

#### **Incorporates the best attributes of enterprise network management systems and element managers**

- Non-monolithic, highly flexible, easily integrated
- Offers a balance between features, functionality and price

#### **Enhanced functionality via NetSight Atlas Plug-In Applications**

- Optional modules provide specific, value-added capabilities to NetSight Atlas
- Use the advanced features of Enterasys hardware while reducing administrative burden and lowering total cost of ownership
- Applications include NetSight Atlas Policy Manager, NetSight Atlas Inventory Manager and NetSight Atlas Access Control List Manager

#### **Wide platform support**

- Use on Windows NT/2000/XP or Solaris operating systems
- Can be deployed with HP OpenView on Solaris

## NETSIGHT ATLAS CONSOLE LITE

### *System-Level Management for Smaller Enterprises*

Ideally deployed in a small network or as a set of basic troubleshooting tools for the wiring closet, NetSight Atlas Lite provides a basic set of network management tools that can be expanded to include NetSight Atlas plug-in applications as needed.

Designed to manage and monitor an Enterasys network as a holistic system, NetSight Atlas Lite improves network visibility and simplifies operation and management, making the network a less complex, utility-like service aligned to meet the needs of the business. In addition, NetSight Atlas Lite's system-level approach effectively bridges the functionality gap between complex network management systems and traditional single element manager application.

NetSight Atlas Lite's inherent flexibility helps each enterprise meet the unique demands of its own business. "Plug-in" applications can be integrated into the Atlas Console, enabling organizations to take advantage of advanced features. For added flexibility, NetSight Atlas Lite has been designed to work with Network Management Platforms such as HP OpenView.

#### **Specifications**

---

##### **System Requirements**

Solaris OS	Supports Solaris 2.7, 2.8
Minimum:	Ultra 10/20, 256 MB RAM
Recommended:	Ultra 30/60, 512 MB RAM 300 MB free disk space
Windows NT/2000/XP	Minimum: P3-450 MHz, 256 MB RAM
Recommended:	P3-866 MHz, 512 MB RAM 300 MB free disk space

#### **Ordering Info**

---

<b>Part No.</b>	<b>Description</b>
NSA-L-CD	NetSight Atlas Lite CD
NSA-L-LIC	NetSight Atlas Lite License key for one copy of NetSight Atlas Lite



## NETSIGHT ATLAS PLUG-IN APPLICATIONS

### Access Control List (ACL) Manager



All NetSight Atlas applications are available for download via the Enterasys website at [www.enterasys.com/netsight](http://www.enterasys.com/netsight). You may evaluate the applications for 30 days after installation.

#### Advanced plug-in application for the NetSight Atlas Console or NetSight Atlas Console Lite

- Provides an easy-to-use graphical tool to define and apply access control lists for the X-Pedition family
- Enables Atlas Console features such as Discovery, customized hierarchy creation and user preferences for a seamless interface between NetSight ACL Manager and other NetSight Atlas components

#### Easy-to-use graphical ACL configuration and management

- Reduces configuration time, when compared to CLI, by providing graphical and wizard-driven ACL configuration
- Drag-and-drop operation allows ACLs to be dragged into any other router interface
- Easy verification of ACL status via ACL status icons
- Duplicate rule checking uses the menu to check for duplicate rules within ACLs
- Logical interfaces to retrieve IP, secondary IP, MAC information, VLAN information from router

#### System-level “Verify and Enforce” for greater control

- Establishes system-level management for ACLs, allowing the user to deploy and verify accurate configuration with a single click

#### System-wide device lists and groups for easy administration

- Control of ACLs using groups of devices, allowing the user to deploy like ACLs on multiple devices in a single action

#### Unique ACL audit trail functionality

- Logging of ACL changes, including history by date and person, ensures that system changes can be referenced quickly and easily

#### Multi-level log-in provides security

- Personalized settings allow for multiple users with different privileges, enabling a tiered approach to managing the security of the ACL system.

## NETSIGHT ATLAS PLUG-IN APPLICATIONS

### *Access Control List (ACL) Manager*

An advanced plug-in for NetSight Atlas, NetSight Atlas ACL Manager enables users—even those without extensive experience configuring router ACLs—to graphically define Access Control Lists and then apply them logically across multiple devices in the X-Pedition family of switch routers. And, since NetSight Atlas ACL Manager uses software configuration of ACLs, they are deployed on all routers automatically, at the system level. This distinguishes NetSight Atlas ACL Manager from similar tools, which require manual, per-device configuration, an awkward, error-prone approach that can leave the network vulnerable. NetSight ACL Manager also includes a wizard that walks the user through the configuration of ACLs and checks ACL coherency.

In addition, NetSight Atlas ACL Manager complies with NetSight Policy Manager’s “Enforce and Verify” paradigm, allowing the user to modify ACL definitions and how they are applied to the network without making configuration changes until the “Enforce” button is pressed.

#### **Specifications**

---

X-Pedition Switch Router	Must be running Native Command Line Interface E8.x
SNMP Client	SNMP client to communicate with X-Pedition (built into application)
Telnet Client	Telnet client to communicate with X-Pedition (built into application)
Private Data Store	Private data store for ACL persistence to router’s logical interfaces
Device Support	Up to 100 devices (no hard-set limitation in the application)
ACL Definitions	Up to 3200 definitions (average of 32 per device with no hard-set number)
Supported Rules	Up to 100 rules per ACL definition (no hard-set number)
Syslog Support	Enable or disable sys logging
Database Support	Save/load information into a single database (.amd file)

## NETSIGHT ATLAS PLUG-IN APPLICATIONS

### *Access Control List (ACL) Manager*

#### **System Requirements**

Solaris OS	Supports Solaris 2.7, 2.8
Minimum:	Ultra 10/20, 256 MB RAM
Recommended:	Ultra 30/60, 512 MB RAM 300 MB free disk space
Windows NT/2000/XP	Minimum: P3-450 MHz, 256 MB RAM
Recommended:	P3-866 MHz, 512 MB RAM 300 MB free disk space

#### **Ordering Information**

---

<b>Part No.</b>	<b>Description</b>
NSA-ACL-CD	NetSight Atlas Access Control List Manager CD
NSA-ACL-LIC	NetSight Atlas Access Control List Manager license key for one copy of NetSight Atlas ACL Manager

#### **Required Product**

(Either NetSight Atlas Console or NetSight Atlas Console Lite is required to use the NetSight Atlas Access Control List Manager)

## NETSIGHT ATLAS PLUG-IN APPLICATIONS

### *Inventory Manager*



All NetSight Atlas applications are available for download via the Enterasys website at [www.enterasys.com/netsight](http://www.enterasys.com/netsight). You may evaluate the applications for 30 days after installation.

#### **Advanced plug-in application for NetSight Atlas**

- Provides value-added inventory and change management capabilities, enabling the advanced features of Enterasys hardware

#### **System-level cataloging of firmware, configurations and hardware**

- Retains detailed information about firmware and configuration—including date and time, and success or failure of download—as well as an inventory in a centralized history log
- Organizes firmware by associating it with the supported devices
- Applies firmware upgrades to single or multiple devices simultaneously
- Saves device configurations as backup to restore or recover from a problem
- Inventories Enterasys products by type, serial number, asset tag information, firmware version, CPU type, CPU speed, memory, daughter cards, etc.

#### **Unique change-tracking functionality and audit trail**

- Tracks configuration changes made by other Atlas applications, third-party management applications or the local console through a unified interface
- Audits devices to view the current configuration and compare it with previously saved configurations

#### **Task scheduler**

- Convenient tool schedules firmware upgrades, configuration uploads/downloads, device configuration audits, device resetting and hardware account management

An advanced plug-in for NetSight Atlas, NetSight Atlas Inventory Manager is a multi-device management application, which provides system-level firmware, configuration and hardware cataloging information allowing network managers to inventory and change-manage the components and configuration of their Enterasys network. NetSight Atlas Inventory Manager enables users to take advantage of the enhanced features of Enterasys hardware and manage all Enterasys infrastructure components cohesively as a system and to maintain an organized central database for data collection and historic information reporting.

# NETSIGHT ATLAS PLUG-IN APPLICATIONS

## Inventory Manager

### Specifications

---

#### System Requirements

Solaris OS	Supports Solaris 2.7, 2.8
Minimum:	Ultra 10/20, 256 MB RAM
Recommended:	Ultra 30/60, 512 MB RAM 300 MB free disk space
Windows NT/2000/XP	Minimum: P3-450 MHz, 256 MB RAM
Recommended:	P3-866 MHz, 512 MB RAM 300 MB free disk space

### Ordering Info

---

<b>Part No.</b>	<b>Description</b>
NSA-IM-CD	NetSight Atlas Inventory Manager CD
NSA-IM-LIC	NetSight Atlas Inventory Manager license key for one copy of NetSight Atlas Inventory Manager

#### Required Product

NSA-CD	NetSight Atlas CD
NSA-LIC	NetSight Atlas license for one copy of NetSight Atlas
NSA-L-CD	NetSight Atlas Lite CD
NSA-L-LIC	NetSight Atlas Lite License key for one copy of NetSight Atlas Lite

#### Required Product

(Either NetSight Atlas Console or NetSight Atlas Console Lite is required to use the NetSight Atlas Inventory Manager)

## NETSIGHT ATLAS PLUG-IN APPLICATIONS

### Policy Manager



All NetSight Atlas applications are available for download via the Enterasys website at [www.enterasys.com/netsight](http://www.enterasys.com/netsight). You may evaluate the applications for 30 days after installation.



#### Investment protection

- Works with the existing security system—there's no need to purchase an additional authentication server
- Fine-tunes Matrix classification capabilities to make them easy to use
- Fully compatible with other NetSight management software

#### Automated capabilities save time and resources

- Offers ease of implementation, administration and troubleshooting
- Appropriate services available to each user, wherever they log on

#### Secure, reliable connectivity to network users

- Gives appropriate services to the appropriate user
- The first line of defense against attacks at the closest point to the user
- Transparently provides complete security and control

#### Reduces complexity of the IT system

- Minimizes network complexity as it increases functionality
- Each personal identity can now be discovered

#### JAVA-based, highly graphical, easy-to-use interface

- Enables the discovery of each personal identity
- Precise view of the network as a system, rather than as individual devices

NetSight Atlas Policy Manager is the key to Role-Based Administration—the modeling of both IT and business concepts inherent in an Enterasys User Personalized Network. Through Role-Based Administration, software models turn technology abstractions into information meaningful to both business and technology personnel.

NetSight Atlas Policy Manager goes even further by providing a graphical view of the entire enterprise, not just individual devices.

With NetSight Atlas Policy Manager, the overall network system can then be viewed as an overall “business system.”

NetSight Atlas Policy Manager is JAVA-based, highly graphical and easy to use, making it faster and more “platform friendly.”

## NETSIGHT ATLAS PLUG-IN APPLICATIONS

### *Policy Manager*

#### **Specifications**

---

##### **System Requirements**

##### **System Requirements**

Solaris OS	Supports Solaris 2.7, 2.8
Minimum:	Ultra 10/20, 256 MB RAM
Recommended:	Ultra 30/60, 512 MB RAM 300 MB free disk space
Windows NT/2000/XP	Minimum: P3-450 MHz, 256 MB RAM
Recommended:	P3-866 MHz, 512 MB RAM 300 MB free disk space

#### **Ordering Information**

---

<b>Part No.</b>	<b>Description</b>
NSA-PM-LIC	Single License for NetSight Atlas Policy Manager
NSA-PM-CD	NetSight Atlas Policy Manager evaluation CD; requires license for use beyond 60 days

##### **Required Product**

(Either NetSight Atlas Console or NetSight Atlas Lite Console is required to use the NetSight Atlas Policy Manager)

### *Gateway Monitoring Tool*

#### **Mass deployment and control**

- Manage up to 10,000 remote office VPN gateways and routers per server
- Discover active devices on the network automatically
- Use click-through web access for device-level administration and diagnostics

#### **Centralized firmware and configuration management**

- Control firmware revision levels across the enterprise
- Upload, backup and restore software configuration in minutes
- Schedule tasks for “set and forget” administration
- Perform administrative tasks transparently to remote users, preventing disruption of worker productivity
- Reboot devices without requiring end-user intervention
- Manage groups by IP address subnet for easy operation

#### **Real-time monitoring and reporting**

- Monitor management activities in real time using SNMP
- View detailed alerts and status messages such as failed downloads or unreachable devices
- Create customized reports based on device class or management task
- Manage devices based on unique serial number, allowing for dynamic allocation of IP addresses
- Plug in to back-office database systems for high scalability

#### **Secure distributed administration**

- Manage remote locations from any standard web browser on the network
- Use SSL to secure management communications between the administrator’s workstation and the NGMT server

NetSight Gateway Monitoring Tool (NGMT) is a Java-based software application for centrally deploying, managing and monitoring up to 10,000 remote Enterasys VPN and router devices at small office/home office (SOHO) and regional office/branch office (ROBO) locations. NGMT allows network administrators to securely control the entire VPN and router infrastructure from any workstation on the network using standard web browsers. SSL support ensures that management communications are secure.



## NETSIGHT ATLAS PLUG-IN APPLICATIONS

### *Gateway Monitoring Tool*

NGMT makes deploying and managing remote locations easy. Administrators define the devices to be managed by IP address, or enter an IP address range and select the Auto Discover feature. Mass deployment of new locations is made easy in combination with Enterasys' EZ-IPSec auto-configuration feature, which provides a one-button connection for creating a VPN tunnel. Once on the network, the device is automatically discovered by NGMT allowing the administrator to quickly take over control.

#### **Specifications**

---

Scalability	Manage up to 10,000 devices per NGMT server
Compatibility	NGMT is for use with the following Enterasys products: Aurorean Network Gateway 1000, 1102 and 1105 for small office/home office (SOHO) locations X-Pedition router for regional office/branch office (ROBO) locations
Hardware Requirements (Minimum)	Microsoft Windows 2000 Professional or XP Professional workstation 450 MHz processor 128 MB RAM 60 Megabytes of free hard disk space
Software Requirements	Internet Explorer or Netscape version 5.5 or higher with Java and SSL enabled
Other Requirements	Customer-provided TFTP/FTP server must be reachable via NGMT NGMT server must reside on the corporate network

#### **Ordering Info**

---

<b>Part No.</b>	<b>Description</b>
NS-GMT	NetSight Gateway Monitoring Tool

## NETSIGHT ELEMENT MANAGER

### *Optimum Visibility and Control of Enterasys Solutions*



All NetSight Atlas applications are available for download via the Enterasys website at [www.enterasys.com/netsight](http://www.enterasys.com/netsight). You may evaluate the applications for 30 days after installation.

#### **New features for Element Manager!**

- Supports Enterasys X-Pedition switch router family
- Compatible with Windows NT 4.0, Windows 2000 Professional, UNIX Solaris
- Integration support for HP OpenView Network Node Manager v. 6.1

#### **Precise management and control of Enterasys Networks™ products—and others**

- Supports all Enterasys devices and other SNMP-compliant devices

#### **Highly graphical, easy-to-use interface**

- Simple point-and-click operation from any console
- Customizable list views can be sorted by any criteria
- OLE and ODBC compliance to embed spreadsheets and share management information with other applications

#### **Automated capabilities save time and resources**

- Integrated Scheduler automates common tasks

#### **Manage multiple devices at once**

- Group element management provides simultaneous administration of many devices via drag-and-drop configuration

#### **Advanced features to improve network troubleshooting**

- Robust alarm, event and trap management; full RMON support; Network Discover Utility

NetSight Element Manager is an easy-to-use network management application that provides comprehensive remote management support for intelligent network management devices, as well as any SNMP MIB I or MIB II manageable devices. Designed to save time and expense in mission-critical environments, NetSight Element Manager automates many network tasks, significantly cutting costs by reducing administration time and freeing up resources.

An intelligent, OLE- and ODBC-compliant application, NetSight Element Manager also allows you to embed applications such as spreadsheets into its network maps for easy charting of statistics. This feature also allows you to export management information to other applications and databases.

NetSight Element Manager provides advanced features to enhance network performance and simplify troubleshooting including improved monitoring capabilities, robust alarm and event management, network discovery, user-configurable maps, group element management and integrated scheduling.

# NETSIGHT ELEMENT MANAGER

## *Optimum Visibility and Control of Enterasys Solutions*

### **Specifications**

---

#### **Software Requirements**

The minimum software configuration for NetSight Element Manager:

- Microsoft Windows NT 4.0 (Service Pack 5) Workstation or Windows 2000 Professional or Solaris 2.7

#### **Hardware Requirements**

The minimum hardware configuration for NetSight Element Manager:

Windows NT 4.0 or Windows 2000 Professional

- Dedicated computer with Pentium™ processor
- 400 MHz clock speed minimum; 550 MHz recommended
- 128 MB RAM minimum; 256 MB RAM recommended
- 300 MB virtual memory minimum; 500 MB recommended
- SVGA graphics card capable of displaying 1024x768 screen resolution
- Color palette display settings set to 256 colors (minimum)
- 300 MB available on hard drive (files consume approximately 280 MB)

Solaris 2.7

- Sun® Ultra 10 or equivalent
- 128 MB RAM; 256 MB RAM recommended
- 330 MHz processor; 440 MHz recommended
- Swap 2x system RAM
- 72 MB disk space
- SVGA graphics card capable of displaying 1024x768 screen resolution
- Color palette display settings set to 256 colors (minimum)

### **Ordering Information**

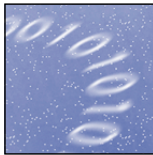
---

<b>Part No.</b>	<b>Description</b>
NS-EM-LIC-1	Single license for NetSight Element Manager; does not include a copy of the software
NS-EM-CD	NetSight Element Manager evaluation CD; requires license for use beyond 60 days
NS-EM-LIC-5	Bundle of 5 NS-EM-LIC-1 and 5 NS-EM-CD
NS-EM-LIC-10	Bundle of 10 NS-EM-LIC-1 and 10 NS-EM-CD
NS-EM-LIC-20	Bundle of 20 NS-EM-LIC-1 and 20 NS-EM-CD

## GLOBAL SERVICES

---

***Anytime, anywhere service for the highest performing enterprise***



Our full range of services can support you in all aspects of your network lifecycle to ensure top performance and availability. Enterasys focuses on key areas of networking expertise and works collaboratively with partners on a worldwide basis to bring additional specific expertise and capability to our customers including planning and installation services, security consulting, project management, site surveys and more.

## SERVICE AND SUPPORT

### *Services for the Full Network Lifecycle*

At Enterasys Networks, it is our strong belief that a true network solution is comprised of a solid combination of **Advanced Services** geared to help you uncover ways to most effectively operate your business; **Pre-Implementation Services** to plan and design your network solution; **Implementation Services** to assist you with the installation process; and high-touch **Availability/Post-Implementation Services** to maximize your network investment and ensure the utmost network availability, integrity and performance.

#### **Advanced/Pre-Implementation Services**

As your organization grows and changes, your networking needs change as well. Enterasys Networks' service and support portfolio of Advanced/Pre-Implementation Services are designed to provide you with strategic network planning and continuous network improvement. It is a best-practice approach to network design and operation that can be used at any point in the network lifecycle to help ensure peak performance. These services include:

- Network Assessment
- Network Planning and Design
- Network Audit, Site Audit
- On-Site Engineering Services

#### **Implementation Services**

Implementation Services, which are made up of **Basic Implementation** and **Customized Advanced Implementation**, address the initial set up of network equipment and on-going implementation to help maximize the performance of our products within your network. Via Enterasys Networks' service and support portfolio, Enterasys Global Services supplies the resources necessary to ensure a successful implementation of the network products deployed in your environment.

- **Basic Implementation**—Ensures the proper installation of hardware elements—on time and on budget. This service is ideal for those customers with limited resources and/or those who prefer to configure their own devices.
- **Customized Advanced Implementation**—Offers customized, project-based installation support for multiprotocol environments including complete interface configuration with other network devices. In addition, Advanced Implementation can provide comprehensive project management and installation documentation for complete project and asset information.

## SERVICE AND SUPPORT

### *Services for the Full Network Lifecycle*

#### **Availability Services**

Availability Services are designed to meet your postimplementation and reliability needs. Providing business protection, network optimization and quick access to expert resources, these services consist of **Technical Access Services, Express Parts Services** and **On-Site Response Services** (see next page for more detail on our Availability Services).

#### **Service Delivery—A Commitment to Excellence**

The heart of any service delivery program is providing customers with the peace of mind that they are receiving the absolute best service available. When you choose Enterasys Networks' service and support portfolio, you can rest assured that your satisfaction is our first priority. And here are just some of the reasons:

- **Dependability**—We offer dependable, quality networking service solutions with an integrated global service infrastructure, enabling you to make the most of your business systems.
- **Innovation**—We push the limits of innovation through multiple service delivery options.
- **Flexibility**—We consider flexibility the cornerstone of our services and support. It ensures that you can choose and access the service offerings that best fit your needs, support maximum network performance and drive your competitive advantage. One integrated portfolio of services, one web site, and a global call-handling and escalation system ensure that end-to-end network availability is supported on both a worldwide and local basis.

## AVAILABILITY SERVICES

### *Enterasys Networks' Premium Maintenance Program*

#### **High-level service expertise to deal with increasing network complexity**

- Defines the technology required to achieve business goals and objectives
- Global capabilities provide the same level of support anywhere in the world

#### **Improved return on investment (ROI) and reduced cost of ownership**

- Optimize performance and utilization to get the most from network investments
- Take full advantage of powerful network capabilities to enhance productivity
- Control and management to ensure proper network planning, design, implementation and operation
- Better management of valuable staff resources as key staff members concentrate on higher value-added activities
- Support throughout the network lifecycle—from initial planning and implementation through ongoing management and enhancements

#### **Minimized downtime**

- Expert, responsive support—whether via phone, e-mail, web or on-site—to ensure high availability

#### **Flexibility**

- Select the services to complement internal resources for top-level support without adding to headcount

Enterasys Networks' provides a full range of services to support all aspects of your network's lifecycle, ensuring top performance and availability.

As an integral part of Enterasys' global service and support, Availability Services are a complete portfolio of offerings that can be tailored to meet each organization's unique requirements. Enterasys offers the right level of expertise and resources to supplement the resources maintained in house. From expert technical telephone support to fast, around-the-clock on-site support, count on Enterasys to help you minimize downtime and maximize the availability and performance of the network.

## AVAILABILITY SERVICES

### *Enterasys Networks' Premium Maintenance Program*

#### **Choose the Level of Service that Works for Your Enterprise**

Availability Services consist of three different offerings. Simply select the service that fits your organization best.

- **Technical Access Services for 24x7 Technical Support**—A basic set of technical support services, which include 24x7 telephone support, GlobalKnowledgebase—our web-based suite of electronic services that provide on-line support—and software maintenance for the products they support. With telephone support, you get 24x7 telephone access via a toll-free phone number routed directly to a Technical Support Engineer at an Enterasys Networks Technical Assistance Center (TAC). Our GlobalKnowledgebase provides access to a full suite of electronic technical support tools and features at all times.
- **Express Parts Services for On-Time Parts Delivery**—You have the option of selecting one of the following Express Parts Services for all similar components being maintained at a single site: Next Business Day, Same Business Day, and Around the Clock. Express Parts Services include Technical Access Services and are based on the response time for delivering the replacement component and hours of coverage.
- **On-Site Response Services for On-Time Parts Delivery, Plus Labor**—You have the option of selecting one of the following services for similar components being maintained at a single site: Next Business Day, Same Business Day, and Around the Clock. On-Site Response Services include Technical Access and Express Parts Services and are based on the response time for delivering the replacement component and hours of coverage.

Availability of Express Parts and On-Site Response are subject to local country capabilities, including customs, legal or other country-specific issues that may prevent meeting this response.

#### **Ordering Information**

---

To order Availability Services, please contact your representative or authorized reseller.

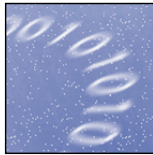
The scope of the project is the ultimate determining factor in pricing any engagement.



# ENTERASYS PARTNER PROGRAM

---

*Creating the future of partnerships*



At Enterasys Networks, we are building the future of partnerships. We understand the way our Partners work with customers, and our Partner Program is built on those business models. That's our commitment—and it's backed by an investment that is unparalleled in the industry. Together, we can build a successful, profitable and prosperous partnership.

## ENTERASYS PARTNER PROGRAM

### *Profit from Our Technology, Focus and Commitment*

As we look to capitalize on new market trends and become the preferred provider of enterprise networking solutions, we've also looked at improving our channel program. We're serious about the partnerships we have with select resellers, distributors and system integrators, and, as such, have developed a unique and mutually beneficial program unlike any other in the industry.

By offering comprehensive benefits such as value-added discounts, demo equipment, qualified leads, 60-day flooring plans, quarterly reseller and end-user promotions, on-line resources, training programs—as well as the most competitive margins—Enterasys delivers a distinct business proposition to partners: measurable, positive impact on their revenue and profitability.

#### **Partner Value Proposition**

- Access to industry-recognized, award-winning technology
- Uniquely focused on the enterprise market
- World-class Partner Program that offers:
  - High margins to value-added resellers
  - Limited number of highly qualified reseller partners
- Commitment to long-term partner relationships

#### **Partner Accreditation—North America**

We've designed the Program so partners can build a more profitable business by selecting the level of commitment that best fits their capabilities. Each accreditation stipulates clearly defined requirements along with corresponding benefits. Partners may be large or small organizations, and offer a total solution or focus on more specific technology or vertical solutions.

#### **Our Partners are classified as follows:**

- **Associate Member**—A reseller that acts as a channel for Enterasys networking products and has access to Enterasys information necessary to develop their business
- **Certified Partner**—An expert in one or more Enterasys solutions that may incorporate services, software, and hardware for their customers
- **Elite Partner**—Provides expertise in all of Enterasys' complete end-to-end solutions, incorporating services, software, and hardware for their customers

## ENTERASYS PARTNER PROGRAM

### *Profit from Our Technology, Focus and Commitment*

#### **New Enhancements!**

We're pleased to introduce some improvements to the Enterasys Networks Partner Program, which together will make it even easier for you to sell (and profit from) Enterasys' industry-leading solutions.

**Value-Added Discount Program**—Available to Certified and Elite partners, this program rewards those partners who achieve and maintain Enterasys revenue goals, complete required sales and technical training and meet other value criteria. Qualified Certified Partners can receive an additional 2% off list price; Elite Partners can take 4% off list price! (Please note: Discounts do not apply to State, Local and Federal Government opportunities due to negotiated contract pricing.)

**Competitive Allowances**—Now qualified members of the Partner Program will be able to participate in the Enterasys' Competitive Allowance process, giving them the additional resources and support to close their most important sales.

**Comprehensive Training**—Enterasys Education has launched a new multi-tiered program that allows partners to customize the curriculum based on their different levels of knowledge and areas of focus. Partners will have the flexibility of choosing the training method that best meets their needs and schedule: self-paced study, web-based virtual classroom teaching and instructor-led training. Now partners can receive the necessary technical and sales training just about anytime, anywhere.

**60-Day Financing**—Enterasys is working to help maintain reseller profitability and cash flow in today's competitive environment. As part of this effort, resellers may take advantage of free 60-day financing available through Enterasys authorized Distributors and Deutsche Financial Services.

## ENTERASYS PARTNER PROGRAM

### *Profit from Our Technology, Focus and Commitment*

**Proposal Services**—A comprehensive set of "person-to-person" and web-based services and tools to assist Certified and Elite partners when preparing proposals, answering RFI and RFQ requests, developing statements of work for professional or implementation services, and producing network designs and configurations.

**Regional Technology Centers**—All partners are invited to bring customers to any one of our Regional Technology Centers (RTC). Each RTC provides a comfortable, state-of-the-art setting for showcasing our award-winning solutions. We have the staff and equipment to personalize each of your customer visits. Choose from RTCs in Chicago, Toronto, New York City, Dallas and Irvine, CA. Plus, look for new Centers opening up in Atlanta, Miami, Menlo Park, CA and Herndon, VA.

**Lead Routing System**—Another great benefit for our valued Partners is a fully automated lead routing system. We can now gather all the leads generated from our website, various shows, marketing campaigns and events, and systematically distribute them to our Elite and Certified Partners based on their training and vertical market specialties.

Each enhancement is designed to provide a competitive edge to our Partners and contribute to your profitability. No wonder Enterasys is fast becoming the preferred partner for IT solution providers everywhere.

