



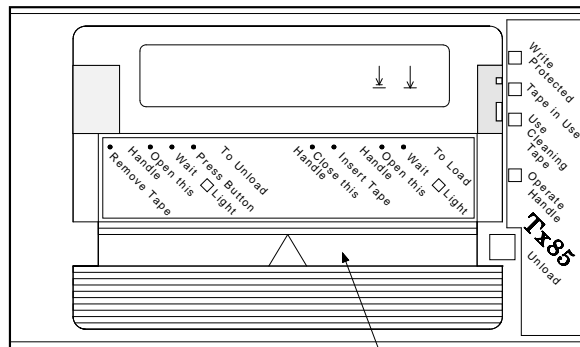
EK-OTK85-RC-002

## Tx85<sup>1</sup> Tape Drive Operator's Reference Card

Use this card as a quick reference when operating the Tx85 tape drive in your system.<sup>1</sup> For detailed information, see your owner's manual.

### Tx85 Front Panel

These components on the Tx85 front panel are for operating the drive:



CARTRIDGE INSERT/RELEASE HANDLE

LJ-00913-T10

<sup>1</sup> Tx85 is a generic reference to the tape drive associated with any member of the Tx85 cartridge tape subsystem or the Tx857 magazine tape subsystem.

### Power-On

When you turn on system power, the drive performs the power-on self-test (POST). The sequence of events is:

1. The indicators turn on sequentially, from top to bottom.
2. All four indicators turn on simultaneously for approximately three seconds.
3. The green Operate Handle indicator and the two orange indicators turn off.
4. The yellow Tape in Use indicator blinks.
5. If no cartridge is loaded, the green Operate Handle indicator turns on and the beeper sounds.

### Indicator Summary

Use this table to determine the drive's operating condition:

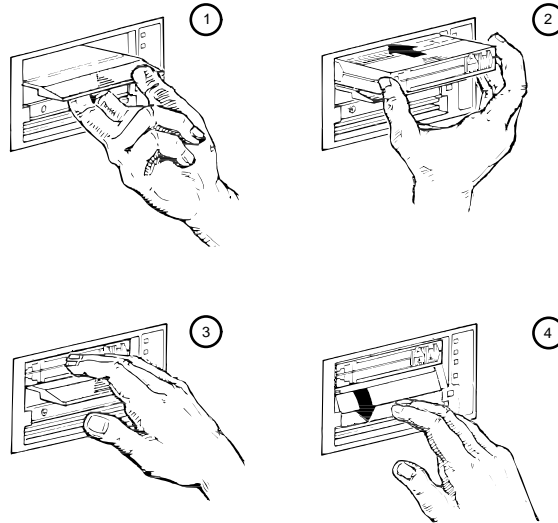
Indicator	State	Condition
Operate Handle (green)	On	Okay to operate the cartridge insert/release handle.
	Off	Do not operate the cartridge insert/release handle.
Tape in Use (yellow)	Blinking	Tape is moving.
	On	Tape is loaded; ready for use.
Write Protected (orange)	On	Tape is write-protected.
	Off	Tape is write-enabled.
Use Cleaning Tape (orange)	On	Load a CleaningTape III cartridge.
	Off	No cleaning required.
All 4 indicators	On	POST is in progress.
	Blinking	Drive fault occurred. Press the Unload button to clear the error. If the error remains, call Digital Services.

## Loading a Cartridge

To load a cartridge into the drive:

1. When the green Operate Handle indicator is on steadily, pull the cartridge insert/release handle open.
2. Insert the cartridge.
3. Push the cartridge into the drive.
4. Push the handle closed.

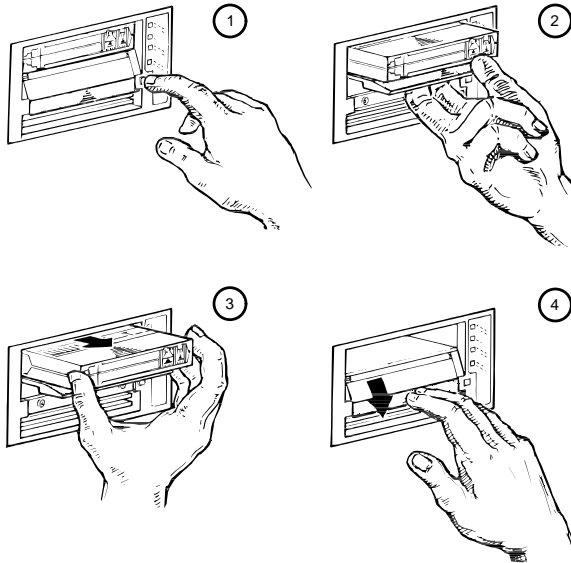
The green Operate Handle indicator turns off and the yellow Tape in Use indicator blinks to show the tape is loading. When the tape is at the BOT marker, the yellow indicator turns on steadily. The tape is now ready for use.



## Unloading a Cartridge

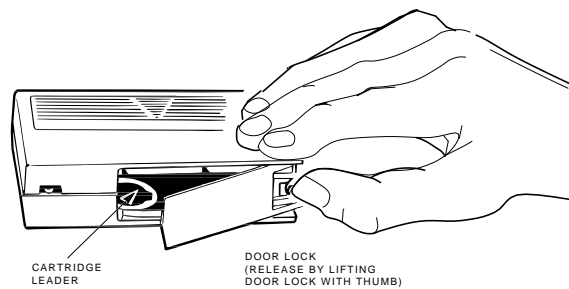
To unload a cartridge from the drive:

1. Press the Unload button or issue the appropriate system software command. The yellow Tape in Use indicator blinks as the tape rewinds. The green Operate Handle indicator turns on and the beeper sounds when the cartridge is ready to be removed.
2. Pull the cartridge insert/release handle open.
3. Remove the cartridge.
4. Push the handle closed.



## Operating Hints

- Never operate the cartridge insert/release handle without the green Operate Handle indicator on steadily or blinking.
- Make sure the cartridge leader is in the correct position; open the cartridge door to inspect the leader.



SHR\_X1027\_89\_CPG

- Insert the cartridge into the drive with a slow, steady motion.
- If the orange Use Cleaning Tape indicator turns on, unload the data cartridge and load a CleaningTape III cartridge. The cleaning cartridge automatically cleans the read/write head and unloads when cleaning is complete. Be sure to remove the cleaning cartridge when cleaning is complete.

## Cartridge Compatibility

The Tx85 tape drive can read tape cartridges recorded on Tx85, TK70, TK50, and TZ30 tape drives. The Tx85 drive can write Tx85 format only on CompacTape III cartridges. The Tx85 drive cannot write TK70, TK50, or TZ30 format on any cartridge.

---

First Edition, May 1991  
Second Edition, July 1991

The information in this document is subject to change without notice and should not be construed as a commitment by Digital Equipment Corporation. Digital Equipment Corporation assumes no responsibility for any errors that may appear in this document.

Restricted Rights: Use, duplication, or disclosure by the U.S. Government is subject to restrictions as set forth in subparagraph (c) (1) (ii) of the Rights in Technical Data and Computer Software clause at DFARS 252.227-7013.

Copyright © Digital Equipment Corporation 1991

All Rights Reserved. Printed in U.S.A.

The following are trademarks of Digital Equipment Corporation: CompacTape, TF, TK, and the DIGITAL logo.

This document was prepared and published by Educational Services Development and Publishing, Digital Equipment Corporation.

---