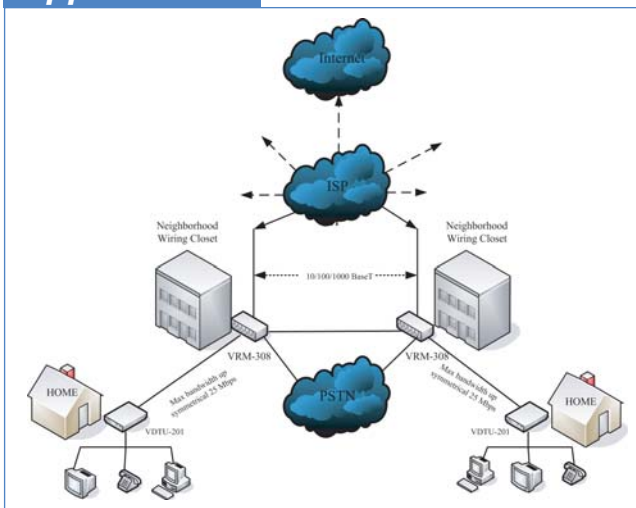


Specifications

- Compliant with IEEE 802.3 & 802.3u Ethernet Standards
- Compliant with ETSI, ITU, ANSI standards
- 10/100/1000Mbps Ethernet ports: 2 x RJ-45
- MDI Ethernet port: 1 x RJ-45
- 25 Mbps symmetrical VDSL port: 8 x RJ-11
- MAC address table: 8K Entries
- Switching method: Store-and-forward
- Flow control method by IEEE802.3x for Full Duplex & Back Pressure for Half Duplex
- Compliant with GARP/GVRP IEEE 802.1p/q port-base VLAN with 256 groups static VID or 4094 dynamic VID
- Compliant with IEEE 802.1v protocol-base VLAN classification
- Compliant with IEEE 802.1d Spanning trees
- Multicast IP table: 512 groups
- Compliant with IEEE 802.1p COS by class of service with 2-level priority queuing
- Compliant with LACP IEEE 802.3ad Trunking
- RS-232 console port :;GDB-9Pin Female / 9600bps
- SNMP v1 RFC-1493 Bridge MIBs
RFC-1643 Ethernet MIB
RFC-1213 MIB II
Enterprise MIBs
RMON groups 1(Statistics), 2(Alarm), 3(Event), 9(History)
- Port security by MAC address filtering
- LED indication: Power good and POST LED
Link/Active/Speed/Full Duplex Status for Ethernet port.
Link for VDSL port.
- VDSL Frequency Spectrum:
Transmitter: 138 KHz ~ 2.8MHz & 5.6MHz ~ 6.95MHz
Receiver: 3.17MHz ~ 5.04MHz & 7.95MHz ~ 12MHz
- Internal switching power adapter Input :
AC 85-265 volts/50-60Hz/1A
- Dimensions: 435 x 230 x 44 mm
- Operating Temperature : 0°C~ 50°C(41F ~ 122F)
- Storage Temperature : - 20°C ~ 65°C(-4F ~ 149F)
- Humidity : 10%~90% non-condensing
- Chipset : Infineon
- Safety : FCC, CE Mark

Application



Ordering Info

- VRM-308: VDSL 4band 8-Port managed IP DSLAM



tel: +886 2659-1021
fax: +886 2659-0237
sales@ctcu.com

info@ctcu.com
support@ctcu.com
www.ctcu.com