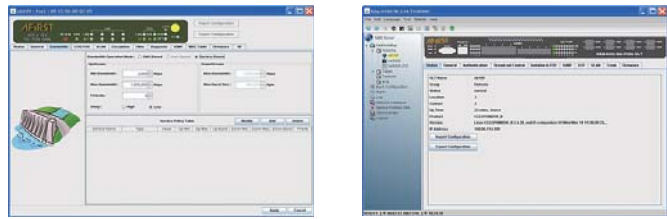


Management Software Network Management System



E-PON NMS

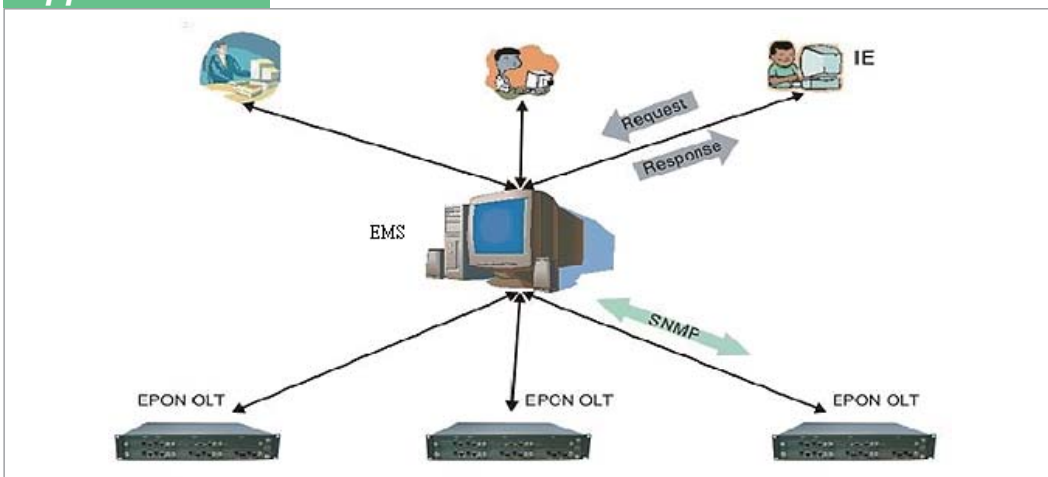
E-PON NMS is a Java-based, client/server GUI Network Management System (NMS). It can manage at least 100 CTC EPON system and 50,000 ONUs plus all of fiber network equipments of CTC. The products include EPON OLT, EPON ONU, CATV Optical Transmitters, and EDFA amplifiers. E-PON NMS provides OAM&P functions such as the daily record of the network activity Log, Alarm, Equipment Firmware Upgrading, Configuration Management, Performance Management, Security Management, Fault Management, and Group Management etc.

The system architecture of E-PON NMS is three-tier. It includes client, NMS server, and the managed EPON network equipments. E-PON NMS allows many administrators to manage the network equipment at the same time through the web browser. The NMS server can accept the SNMP traps that issued by the network equipments. With E-PON NMS, administrator can easily control the current network status. .

Specifications

Items	E-PON NMS
System Requirements	CPU: Intel Pentium P4-1.6G or higher DRAM: 256MB or higher Display: 1024x768 or higher OS: Windows 2000 or Windows XP Java J2SE 1.4.2 or above MySQL 4.0.18 or above
User Interface	Java-based GUI Configure multi-COA simultaneously
Configuration Management	Interface configuration SLA provision Firmware update Downloadable DBA function Remote control of ONU
Fault Management	Local/Remote loopback testing Ping testing Link status detection System fault detection Dying Gasp
Performance Management	Local/Remote PON/Ethernet interface statistic collection and history
Security Management	Data encryption/decryption ONU authentication (802.1x and RADIUS)
Account Management	Client information update Freeze/unfreeze client connection
Database (MySQL)	Data collection and history Account management

Application



Ordering Information

- **E-PON NMS** E-PON Network Management System Software.