

10/100/1000Base-T to 1000Base-X SFP media coverter

FIB1-1000ES FRM301-1000ES

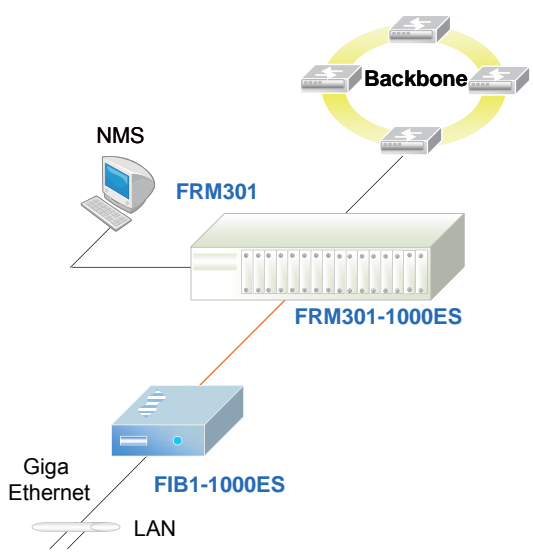
The FRM301-1000ES and FIB1-1000ES are Gigabit Ethernet 10/100/1000Base-T to 1000Base-SX/LX SFP. They are managed (when installed in FRM301 with management) or non-managed stand-alone media converters, which give you the options to choose from a wide range of industry standard SFP modules with LC connectors. SFPs in multi-mode and single mode models are available as well as BiDi which allows bi-directional transmissions using only a single fiber cable. When auto-negotiation is selected, these units will automatically tailor themselves to convert both half-duplex and full-duplex signals, depending on your specific network needs. LED indicators signal the power status of the converter, UTP port speed, Link, and duplex status, FX port Link and duplex status.



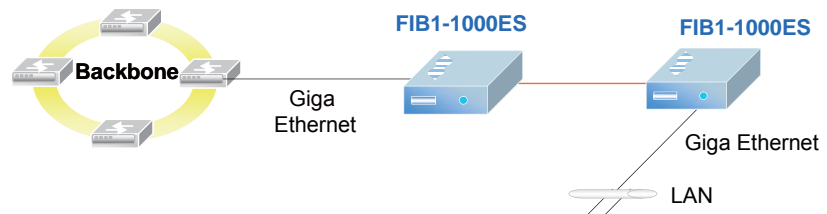
Optical Interface	Connector 1x9 (SC) or SFP LC Data rate 1000Mbps Duplex mode Full duplex Fiber MM 50/125µm, 62.5/125µm. SM 9/125µm Distance MM 550m, 2km, SM 15/30/50/80/120km WDM 20/40/60km Wavelength MM 1310nm, SM 1310,1550nm WDM 1310Tx/1550Rx (type A) 1550Tx/1310Rx (type B)
Electrical Interface	Connector RJ45 Data rate 10Mbps, 100Mbps, 1000Mbps Duplex mode Half / Full duplex Cable 10Base-T Cat.3, 4, 5, UTP 100Base-TX Cat.5, 5e or higher 1000Base-T Cat.5, 5e or higher
Standard	IEEE 802.3, IEEE 802.3u, IEEE802.3ab, IEEE802.3z
Indications	LED (Power, FX-Link, TX-Link, TX-SPD, TX-Duplex, LLF)
Power Input	Card : 12VDC Standalone : AC, DC options
Power Consumption	< 5W
Dimension	123 x 86 x 20mm (D x W x H)
Weight	FRM301: 290g, FIB1:340g
Temperature	0 ~ 50°C (Operating), -10 ~ 70°C (Storage)
Humidity	10 ~ 90% non-condensing
Certification	CE, FCC, LVD, RoHS
MTBF	65,000 hrs (25°C)

Features

- 10/100/1000Base-T to 1000Base-SX/LX SFP
- Network management via terminal, or SNMP in FRM301 chassis
- Auto-negotiation or forced mode
- Auto MDI/MDIX
- Forward 1632 bytes (Max.) packets
- Supports Flow control (Pause)
- Support Link Fault Pass through (LFP) function
- Auto Laser Shutdown (ALS)



Gigabit Ethernet Media Converter



Ordering Information

FRM301-
 FIB1- Model type
 1000ES

Example: FRM301-1000ES