

4-Port OAM/IP Gigabit Ethernet In-band Managed Converter /Switch



Overview:

The FRM220A-1000EAS/X is a 4-port, IEEE802.3ah OAM Ethernet switch with two 10/100/1000BaseT copper plus two dual speed fiber 100/1000BaseX. 1000EAS/X is an intelligent in-band managed switch, offering SMBs and enterprises the option to integrated high-speed LAN switching into one platform.

Key Features:

- Forward 10k byte jumbo packets (max.)
- Supports fiber redundant ^(see diagram II) and spanning tree protocol ^(see diagram III)
- Supports OAM (Operations, Administration and Maintenance) remote loopback to assist in diagnosing network problems
- Supports dying gasp, remote power failure alarm
- Supports bandwidth control (64k~1000Mbps)
- Supports IEEE 802.1Q Tag, port based VLAN and Q-in-Q

Diagram I:

FRM220A-1000EAS/X Application

"In the Centrally managed application, the main chassis, all of its cards and all fiber connected remote CPE units can be provisioned and monitored from a single management point"

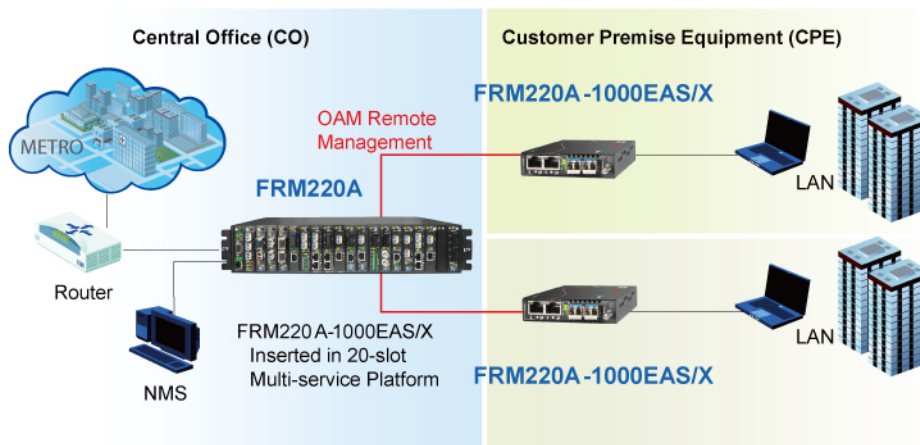


Diagram II

Fiber Redundant / Trunking Application

"Utilizing a special trunking function, the 1000EAS/X can be deployed in stand-alone, point-to-point applications and provide 1+1 redundant fiber protection"

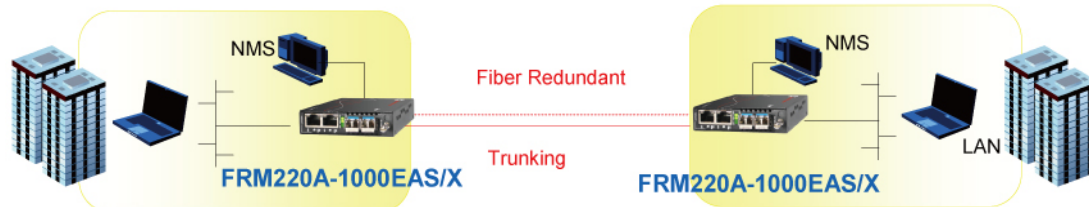


Diagram III

Fiber Ring Application

"In the ring or mesh topology, Spanning Tree Protocol enables a highly resilient network based on multiple 1000EAS/X units"

