

# ADSL2+ Mini DSLAM MD-20



## Digital Subscriber Line Access Multiplexer

The MD-20 is a mini-DSLAM designed for efficient scalability and easy deployment for access networks. This broadband access solution provides an exceptional way to extend ADSL reach further from central office DSLAM equipment to new customers, resulting in increased revenue generating service for both IP and ATM networks. The energy-efficient compact enclosure design fits perfectly inside temperature hardened and space limited rack space of telecommunication curbside cabinet.

### Features

- Bring ADSL service to previously unreachable customers
- Supports ADSL, ADSL2, ADSL2+ via POTS/ISDN interface
- Provides 24 ~ 72 ports of ADSL in one 2U chassis
- Modular design with hot swappable and field replaceable units
- Build-in POTS/ISDN Splitters
- System Overheating Protection
- Full diagnostic and alarm reporting capability
- SNMP, Telnet, CLI and Web based management
- Dual A+B -48V DC power input terminal

### Specifications

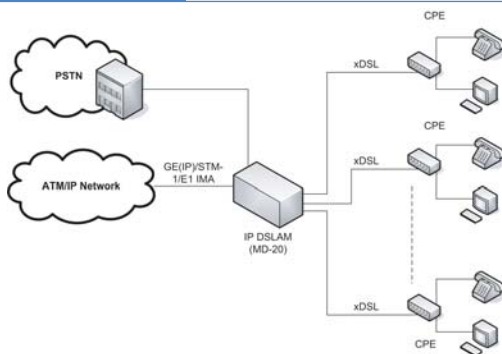
General Specifications		
Power	DC	-48 (-42 — -56)VDC
Environment	Temperature	-40 — 65°C (Operating); 0 — 70°C (Storage)
	Humidity	5 — 95% non condensing
Power Consumption	130W (maximum)	
Dimensions(WxDxH)	482mm x 304mm x 88mm	
Weight	4.4 Kg with no units installed, fan card 2U: 0.25 Kg	
Compliance	ITU-T K.20, K.21, ETSI 300-019, 300-386, EN 60950, Conform to CE requirements	
MTBF	20150 hours	

Interface Cards	
Network Interface	STM-1 8 x E1 IMA 2 x 10/100/1000 Based-Tx or 2 x 1000 Base-FX SFP
Subscriber Interface 24 ports card	ADSL2+/POTS/ISDN (G.992.1 .2 .3 .5)

Service Characteristics	
ATM	QoS (UBR, rt-VBR, nrt-VBR, CBR) PVC default priority and PVC-to-VLAN mapping Traffic scheduling/shaping/policing
Ethernet	IEEE 802.1d Spanning tree protocol (STP) IEEE 802.3ad Link aggregation IEEE 802.1g port (Tag Based/ LAN) Security on console access
OSI Layer 2 Functionality	MAC filtering and count limit Access control list (ACL) Hardware-based multicasting Broadcast control and broadcast rate limit Port-based virtual local area network (VLAN) IGMP snooping v1 and v2 SNMP v1 and v2c Remote Monitoring (1, 2, 3, 9 groups)

**Management Information Base (MIB)**  
RFC 2514, 2515 ATM MIB, RFC 1213 SNMP MIB II, RFC 1493  
Bridge MIB, RFC 1643 Ethernet MIB, RFC 2674 Q MIB, RFC 1757  
RMON MIB, group 1,2,3,9, IMA-MIB, SHDSL Line-MIB, ADSL Line  
MIB, CTC Union proprietary MIB

### Application



### Ordering Info

MD-20 Mini DSLAM Chassis	
MD-20-MA1A	19" 2U Rack mount Chassis Up to 3 slots + 1 Slot (for Network Interface card) With DC power & Cooling Fan & Filter
Trunk Card	
MD-00-GE1A	2 x 100/1000 Based-TX or 2 x SFP uplink

Line Card	
MD-00-AL5A	ADSL 24L ETSI 270 Splitter Annex-A
MD-00-AL5B	ADSL 24L ISDN Splitter Annex-B
MD-00-SL6A	SHDSL 24L W/O WET Current Annex-A/B, 2 wire, ATM base
1.25G SFP	
SFM-7000-S85	MM, 550m, 850nm, LC, 8.5dBm, (w/o DD)
SFS-7010-L31	SM, 10km, 1310nm DFB, LC, 10.5dBm (w/o DD)
SFS-7040-L31	SM, 40km, 1310nm DFB, LC, 19dBm (w/o DD)
SFS-7080-Z55	SM, 80km, 1550nm DFB, LC, 23dBm (w/o DD)